



**7.2. START TIME:** The first warning signal will be made at 1830 hrs. The first warning signal in September will be at 1800 hrs. The class starts will be announced using the appropriate code flag. Generally the order will be A fleet followed by B fleet. However on occasion A and B may start together as noted by the class flags flown. A and B may sail different courses as noted on the course board.

**9. RACING AREA:** Start in the vicinity of Yellow Nun "E", 1+ miles west of Deer Island Light.

**10.1 THE COURSE:** Courses using marks from Cottage Park Yacht Club Wednesday Night Racing Mark List will be designated by letters displayed by the race committee signal boat. The Wednesday Night Racing Mark List **WAS REVISED FOR 2015. Be sure to use the list marked Revised Feb 2015.** Marks shall be rounded, and the finishing mark passed, in the order displayed.

**10.3 (d):** If a green flag or placard "S" is displayed by the race committee signal boat, all turning marks shall be rounded to starboard; otherwise a green color or the letter "S" associated with an individual turning mark letter, will indicate starboard rounding for that mark, and a red color, or letter "P" associated with the turning mark, will indicate port rounding. **In the absence of any indications all marks shall be left to port.**

**10.4:** All racing vessels are requested to stay clear of the starting line until 5 minutes before their start. In addition while waiting to start, all racing vessels are requested to stay clear of the Winthrop Ferry Channel, between RN "6" and GC"7", GC"5" and GC "3" and RN "4". All vessels are reminded that the Winthrop Ferry has the right of way.

**12.1 MARKS:** Cottage Park Yacht Club Wednesday Night Racing Mark List revised 2015 available at [www.cpyc.org](http://www.cpyc.org) or attached. The Race Committee boat may also have copies available.

**14.2 RECALLS:** The race committee will use the VHF Channel 72.

**17.1 & 17.2 TIME LIMIT:** The time limit for each class shall be two hours. The Finishing Window will be 30 minutes after the first boat finishes in each class.

## **20. SCORING:**

**20.1** The low point system will be used. RRS A4

**20.2** In each of the three series, (Spring, Summer, Late Summer), there will be one (1) race thrown out if there are five (5) races sailed and scored. Rumbles may or may not be included for the series. RRS A9 will apply. Tied series scores will be broken according to RRS A8.1 and A8.2

**20.3** Overall season scores will be based on the combined results of the three individual series. Scoring will be according to RRS A2 and A9. Tied season scores will be broken according to RRS A8.1 and A8.2

**20.4** If an entrant (boat) is unable to compete because of required race committee duty, it will be scored for that night an average number of points for all other races in that series.

**20.5** Boats will be scored using either their cruising or racing handicap based on their declaration to the RC before the race. Boats using spinnakers MUST fly an "R" flag to be scored with their racing rating.

## **24. PRIZES:**

**24.1** Prizes will be awarded for first place in each class for the Spring, Summer, Late Summer series.

**24.2** Prizes will be awarded for three places in each class for the overall season.

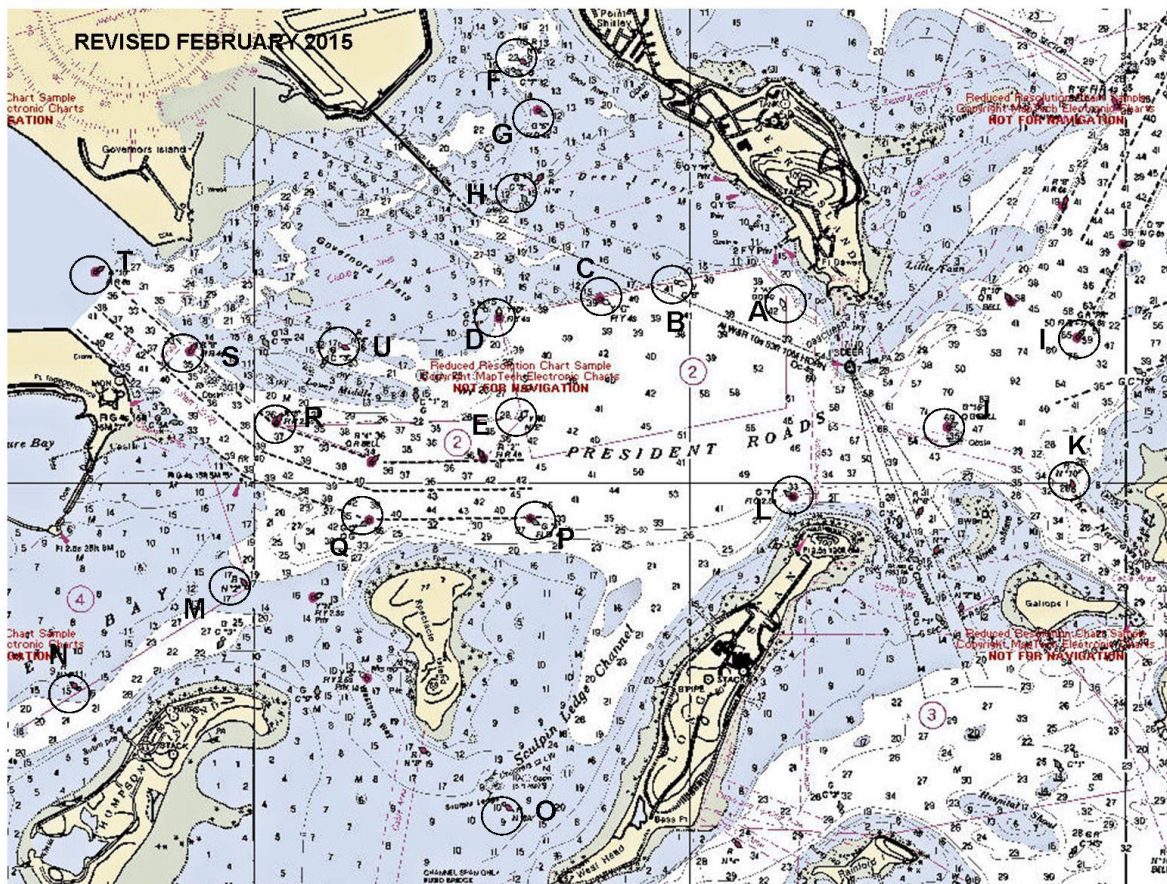
**24.3** Prizes will be presented at CPYC Annual Awards in the Fall at a date to be announced.

**24.4** To be eligible for prizes, each entrant (i.e., boat) must provide at least one adult to assist the Race Committee during one Wednesday evening.

**ADDITIONAL INSTRUCTIONS:** Each boat must identify itself by coming within hailing distance of the Race Committee signal boat prior to the beginning of its class starting sequence, but not within five (5) minutes of the start of the prior class state to check in, report the number of souls on board and declare whether they are racing spinnaker or J&M.

All sailors are invited to the Cottage Park Yacht Club Pilot House following the evening racing.

**Dates for Rumble I, II and III are denoted by starred dates. Separate Sailing Instructions will be issued for Rumble starting orders, location and scoring.**



**CPYC Wednesday Night Racing Marks**  
Revised February 2015

A - Yellow Gong "A"	President Roads Anchorage Buoy "A"	42 20.5932N	070 57.5594W
B - Yellow Flasher "B"	President Roads Anchorage Buoy "B"	42 20.7143N	070 57.8360W
C - Yellow Can "C"	President Roads Anchorage Buoy "C"	42 20.6470N	070 58.3145W
D - Yellow Flasher "D"	President Roads Anchorage Buoy "D"	42 20.5495N	070 58.8476W

E - Yellow Nun "E"	President Roads Anchorage Buoy "E"	42 20.2189N	070 58.7730W
F - Red Nun #6	2/10 Mile S of Winthrop Dolphin	42 21.4316N	070 58.7403W
G - Green Flasher #5	5/10 Mile S of Winthrop Dolphin	42 21.2675N	070 58.6966W
H - Green Can #3	3/10 Mile E of Airport Pier (Winthrop)	42 20.9502N	070 58.7403W
I - Gr & Rd Flasher "PR"	8/10 Mile E of Deer Island Light, (Flash Green)	42 20.4883N	070 56.2221W
J - Green Bell Buoy #15	1/10 Mile N of Nix's Mate Day Marker	42 20.0418N	070 56.6715W
K - Red Nun #10	2/10 Mile NW of Lovell Is, The Narrows	42 19.9746N	070 56.2348W
L - Green Flasher #17	1/10 Mile N of Long Island Head	42 19.9557N	070 57.5230W
M - Red Nun #2	4/10 Mile N of Thompson's Island	42 19.6456N	071 00.0266W
N - Red Nun #4	2/10 Mile NW of Thompson's Island Pier	42 19.2986N	071 00.7999W
O - Red Nun #8A	3/10 Mile SW Spectacle Isl. Sculpin Ledge Buoy	42 18.9084N	070 58.8476W
P - Green Flasher #1	3/10 Mile NE Spectacle Isl. Main Ship Ch. #1	42 19.8804N	070 58 7275W
Q - Green Flasher #3	2/10 Mile NW Spectacle Isl. Main Ship Ch. #3	42 19.8730N	070 59.4680W
R - Red Flasher #6	2/10 Mile SW Lower Middle, Main Ship Ch.#6	42 20.2025N	070 59.9011W
S - Red Flasher #8	4/10 Mile W Lower Middle, Main Ship Ch.#8	42 20.4459N	071 00.2904W
T - Red Flasher #10	2/10 Mile SW of Airport Radar, Main Ch. #10	42 20.7182N	071 00.7244W
U - Red Nun #4	1/10 Mile NE of Lower Middle, Low Mid Ch.#4	42 20.4728N	070 59.6045W
X - Buoy end of the starting Line			

**The Race Committee may use additional marks;  
either Government Marks or Drop Marks.  
Their use will be signaled visually with a courtesy audible from the RC.  
These will be designated V, W, Y, and Z.**