

# CONSTITUTION YACHT CLUB

Boston, Massachusetts

## Sailing Instructions Wednesday Evening Series 2016

### 1. Rules

- 1.1. The regatta will be governed by the rules as defined in *The Racing Rules of Sailing*.
- 1.2. No national prescriptions will apply.
- 1.3. The MBSA General Sailing Instructions will apply except as modified by these Event Sailing Instructions.
- 1.4. A boat breaking one or more rules of Part 2 may take a One-Turn penalty. This modifies rule 44.1

### 2. Notices to Competitors

- 2.1. Notices to competitors will be posted online at [www.cycboston.org/racing](http://www.cycboston.org/racing)

### 3. Changes to Sailing Instructions

- 3.1. Any change to the sailing instructions will be posted before 1500 on the day it will take effect.

### 4. Signals Made Ashore

- 4.1. No signals will be made ashore.
- 4.2. Racers shall monitor VHF Channel 69 starting at 1800 on race day for any announcements regarding that evening's races.
- 4.3. Race cancellations will also be made via email at the earliest time that a cancellation notice is made.

### 5. Schedule of Races

- 5.1. Racing will be broken into three 6-week series, with one race scheduled each Wednesday.
- 5.2. The following dates make up the three series:
  - SPRING: 6 Races May 18<sup>th</sup> – June 22<sup>th</sup>
  - SUMMER: 6 Races June 29<sup>th</sup> – August 3<sup>rd</sup>
  - FALL: 6 Races August 10<sup>th</sup> – September 14<sup>th</sup>
- 5.3. The scheduled time of the first warning signal is 1830.
- 5.4. **Rumbles:** The following are the dates for the Boston Harbor Rumbles. The cost is included in the season fees. Separate SI's and courses will be issued for each Rumble.

Rumble 1:	June 15	Hosted by Constitution YC
Rumble 2:	July 13	Hosted by Hingham YC
Rumble 3:	Aug 17	Hosted by Cottage Park YC

### 6. Class Flags

- 6.1. Class flags will not be mandatory.
- 6.2. There will be up to 3 classes (based on participation).
- 6.3. If there are 3 classes, the splits will follow the MBSA Class splits based on a boat's **spinnaker** rating.
- 6.4. If there are 2 classes, class "A" shall be boats with **spinnaker** ratings 79 and below and class "B" will be **spinnaker** ratings 80 and above.

### 7. Racing Areas

- 7.1. The racing area comprises Boston Harbor from south of Pier 4 to the vicinity of gong "10 FL R 6s."
- 7.2. For courses **1 – 6**, the start area will be in the vicinity of the Coast Guard pier.
- 7.3. For courses **N1, N2, Rumble 1, and Rumble 2** the start area will be in the area between RN "2" west of Logan Airport and G "13" Fl G 4s.

### 8. The Courses

# CONSTITUTION YACHT CLUB

Boston, Massachusetts

## Sailing Instructions Wednesday Evening Series 2016

- 8.1. The diagrams in Attachment 1 show the courses including the approximate lap distances. The diagrams are for informational purposes only: these Sailing Instructions comprise the authoritative description of each course.
- 8.2. There are 11 basic courses which may be extended with multiple laps.
- 8.3. Marks are rounded to PORT unless otherwise indicated.
- 8.4. Some courses may use the starting line as a gate – these are indicated below by the word “**gate.**”
- 8.5. If more than one lap is indicated, and the course contains a **Gate**, the gate will be honored both upwind and downwind.
  - 8.5.1. **Course 1:** 0 – 13 – Gate – 1 – Finish
  - 8.5.2. **Course 2:** 0 – 12 – Gate – 1 – Finish
  - 8.5.3. **Course 3:** 0 – 13 – Finish
  - 8.5.4. **Course 4:** 0 – 12 – Finish
  - 8.5.5. **Course 5:** 0 – 13 – 12 – Finish
  - 8.5.6. **Course 6:** 0 -13 – 12 - 13 – 12 – 13(starboard) – Finish
  - 8.5.7. **Course 7:** 0 -13 – 12 – 13(starboard) – Finish
  - 8.5.8. **Course N1:** 0 – 1 – Finish
  - 8.5.9. **Course N2:** 0 – 1 – 13 – 12 – 1 – Finish
  - 8.5.10. **Course Rumble 1:** 0 – 10 – Gate – 1 – Gate – 12 – Finish
  - 8.5.11. **Course Rumble 2:** 0 – 10 – Gate – 1 - Finish
- 8.6. For multiple laps of courses **3, 4, 5,** and **N1**, the pin end of the start/finish line will be the turning mark.
- 8.7. No later than the warning signal, the race committee signal boat will announce the selected course on VHF channel 69.
- 8.8. The RC may shorten a course by hailing the fleet on VHF channel 69. There may be no Signal Flag or Sounds. This changes rule 32.2.
9. **Marks**
  - 9.1. “0” refers to the starting / finishing line.
  - 9.2. “1” refers to a drop mark in the vicinity of Pier 4 and Pier 5 of the Navy Yard
  - 9.3. 10 refers to R “10” Fl R 6s
  - 9.4. 12 refers to R “12” Fl R 2.5s
  - 9.5. 13 refers to G “13” Fl G 4s
  - 9.6. The start / finish line are the blue Race Committee flag on the committee boat and an inflatable white pyramark.
10. **Areas That Are Obstructions**
  - 10.1. Vessels will observe the boundary to the south of Logan Airport demarcated by white buoys.
11. **The Start**
  - 11.1. Vessels must check in prior to their warning, either by passing the committee boat or on VHF 69. Vessels shall indicate whether they are “racing” or “cruising.” Vessels registered as “cruising” shall not fly a spinnaker during that race.
  - 11.2. Races will be started using rule 26 with the warning signal made 5 minutes before the starting signal.

# CONSTITUTION YACHT CLUB

Boston, Massachusetts

## Sailing Instructions Wednesday Evening Series 2016

- 11.3. There will be approximately 1 minute between the start of one class and the warning of the next class.
- 11.4. The starting line will be between the blue Race Committee flag on the committee boat and a white pyramark.
- 11.5. Boats whose warning signal has not been made shall stay clear of the starting area during the starting sequence for other races.

### 12. Change of the Next Leg of the Course

- 12.1. The course will not be changed, except by shortening, as described in 8.8 of these SI's.

### 13. The Finish

- 13.1. The finishing line will be between the blue Race Committee flag on the committee boat and a white pyramark.
- 13.2. During periods of reduced visibility (such as after dark), boats are required to announce their approach to the finish, take their own GPS finishing time, and report it to the race committee via VHF 69 and by sending an email to the fleet captain.

### 14. Penalty System

- 14.1. For all classes, rule 44.1 is changed so that the Two-Turns Penalty is replaced by the One-Turn Penalty.

### 15. Time Limits

- 15.1. For all classes, from May to July any race in which no yacht finishes by 2045 will be abandoned.
- 15.2. For all classes, from August to October any race in which no yacht finishes by 2015 will be abandoned.
- 15.3. From May to July, if a yacht finishes before the time limit, all other yachts must finish by 2100.
- 15.4. From August to October, if a yacht finishes before the time limit, all other yachts must finish by 2030.
- 15.5. Yachts not finishing within the time limit will be scored DNF. This changes rules 35, A4, and A5.
- 15.6. A yacht must notify the RC on VHF channel 69 if it retires for any reason.

### 16. Protests and Requests For Redress

- 16.1. US Sailing protest forms are available on the [www.cycboston.org/racing](http://www.cycboston.org/racing) page. Protests and requests for redress or reopening shall be emailed to the Fleet Captain within the time limit.
- 16.2. For each class the protest time limit is 1830 on the day following racing.
- 16.3. The Fleet Captain will notify by email all competitors of hearings in which they are parties or named as witnesses and will convene a protest committee.
- 16.4. It is the intent of the protest committee to conduct all hearings by a combination of email, telephone, and other electronic means; however, **a party to a protest has the right to request the hearing be held in a physical location.** The request for a hearing to be heard in person must be made at the time the protest is submitted. However, the protest committee may convene virtually to render their decision. This modifies rule 63.3(a).
- 16.5. The Protest Chairman shall schedule the hearing at the earliest possible date. Once scheduled, the hearing will not be rescheduled for the convenience of the Protestor or Protestee. The committee will hear the protest if only one party is present. This is in accordance with rule 63.3(b).
- 16.6. Requests for redress shall be delivered to the protest committee within 24 hours of the end of the series in which the action occurred. Refer to rule 62.1 for appropriate reasons for redress.

### 17. Scoring

- 17.1. Scoring system is the modified CHiPS as provided through MBSA.

# CONSTITUTION YACHT CLUB

Boston, Massachusetts

## Sailing Instructions Wednesday Evening Series 2016

17.2. One race is required to constitute a series.

17.3. When 5 or more races have been completed, a boat's series score will be the total of her race scores excluding her worst score. This modifies Appendix A2.

### 18. Safety Regulations

18.1. Boats are required to check in with the race committee on VHF Channel 69 prior to their warning signal.

18.2. A boat that retires from a race shall notify the race committee as soon as possible.

18.3. Boats are required to comply with all applicable USCG safety regulations for their vessel.

### 24. Trash Disposal

No trash may be discharged from any boat into Boston Harbor.

### 27. Radio Communication

27.1. All racing boats are required to monitor VHF channel 69 for the duration of the race.

27.2. The race committee will make all announcements on VHF Channel 69.

27.3. Rule 41 is in effect; however racers are encouraged to monitor VHF channels 13 and/or 16 in addition to channel 69 due to the amount of commercial traffic present in the racing area.

### 28. Prizes

Prizes will be given in each class for each series and overall. Prizes will be awarded at the CYC Annual meeting and brunch.

### 29. Disclaimer of Liability

Competitors participate in the regatta entirely at their own risk. See rule 4, Decision to Race. The organizing authority will not accept any liability for material damage or personal injury or death sustained in conjunction with or prior to, during, or after racing.

### 30. Insurance

Each participating boat shall be insured with valid third-party liability insurance. Proof of insurance shall be provided to the race committee or club officers upon request.

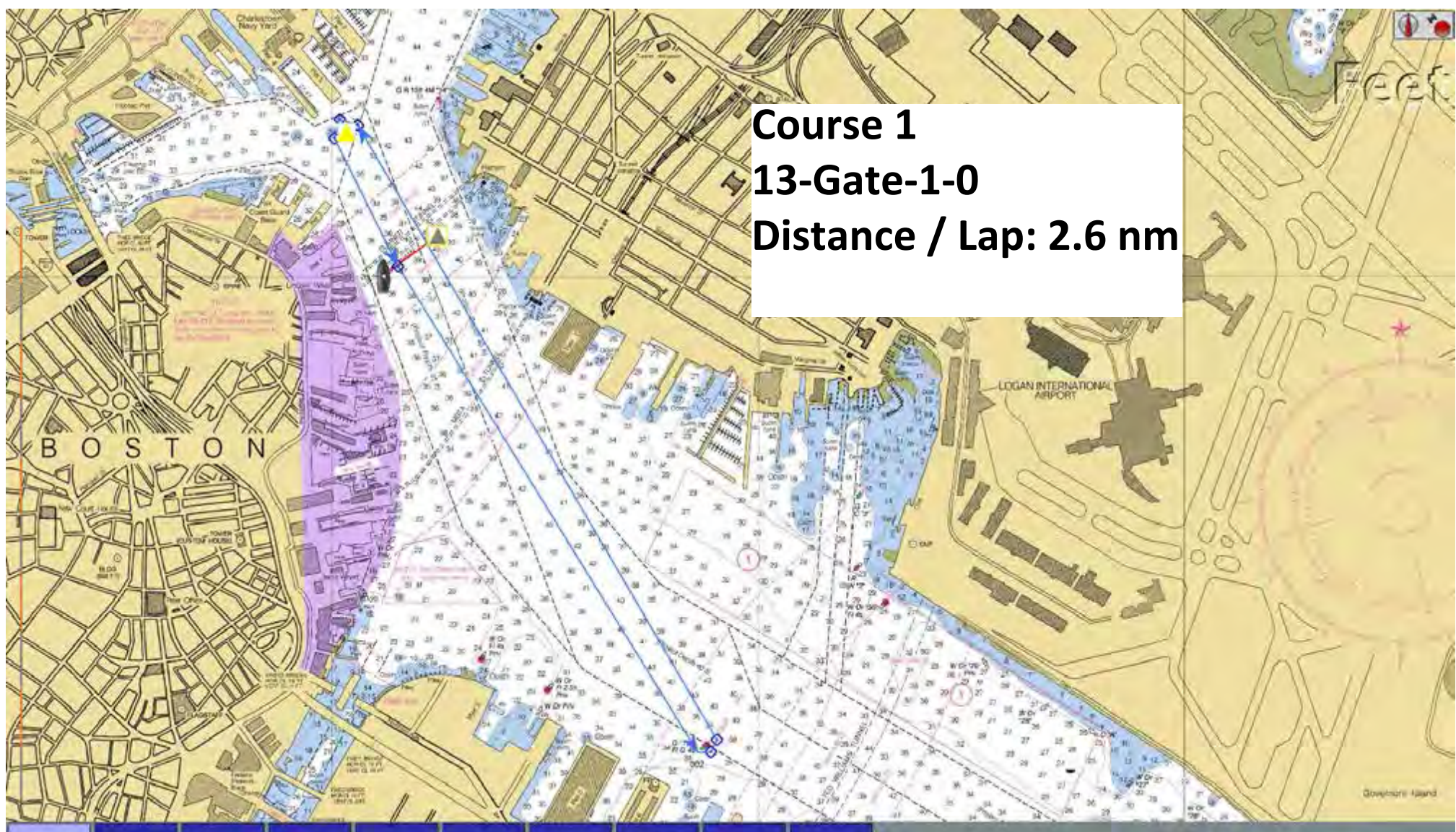
# CONSTITUTION YACHT CLUB

Boston, Massachusetts

## **Sailing Instructions Wednesday Evening Series 2016**

Appendix 1

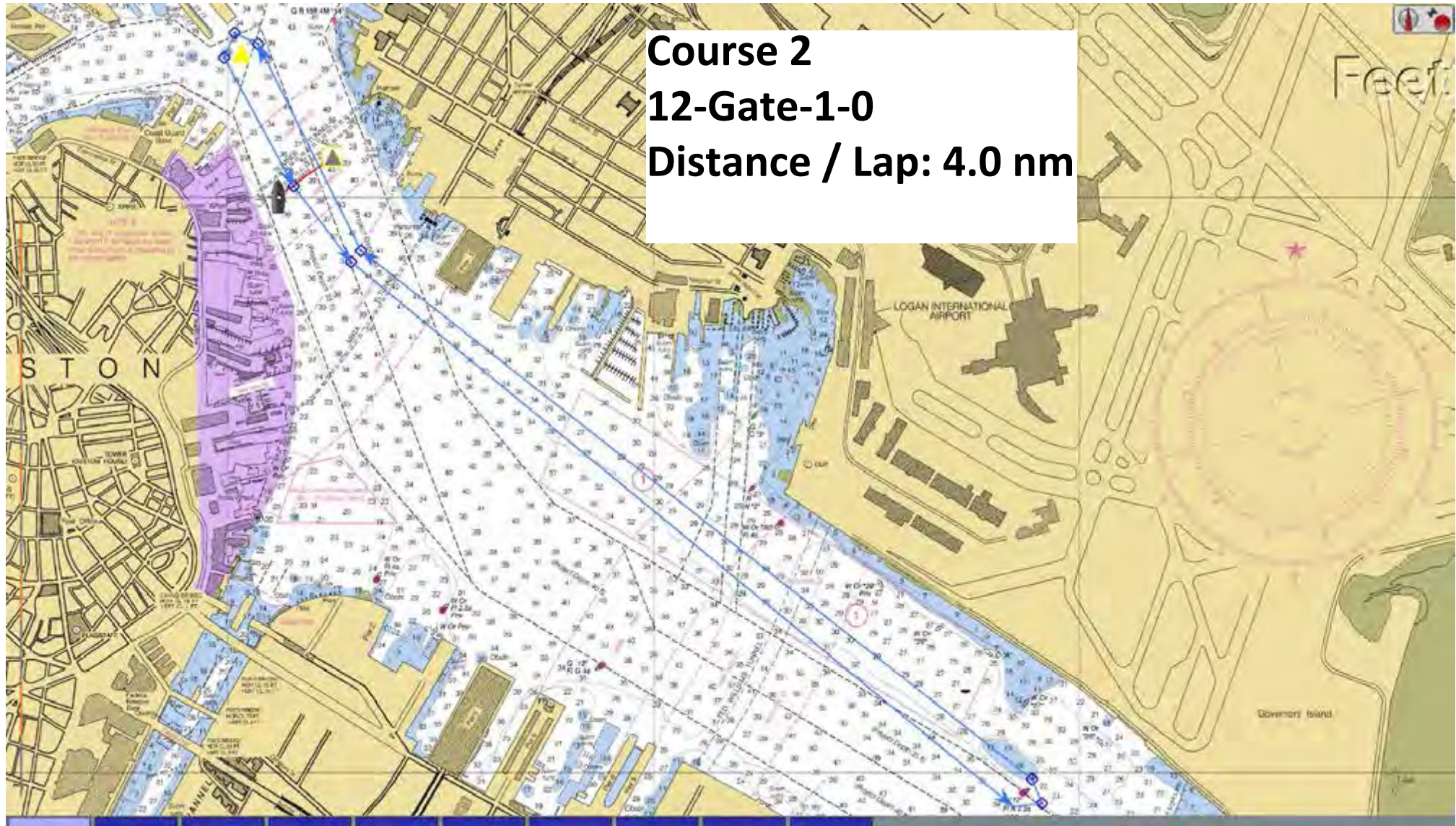




**Course 1**  
**13-Gate-1-0**  
**Distance / Lap: 2.6 nm**

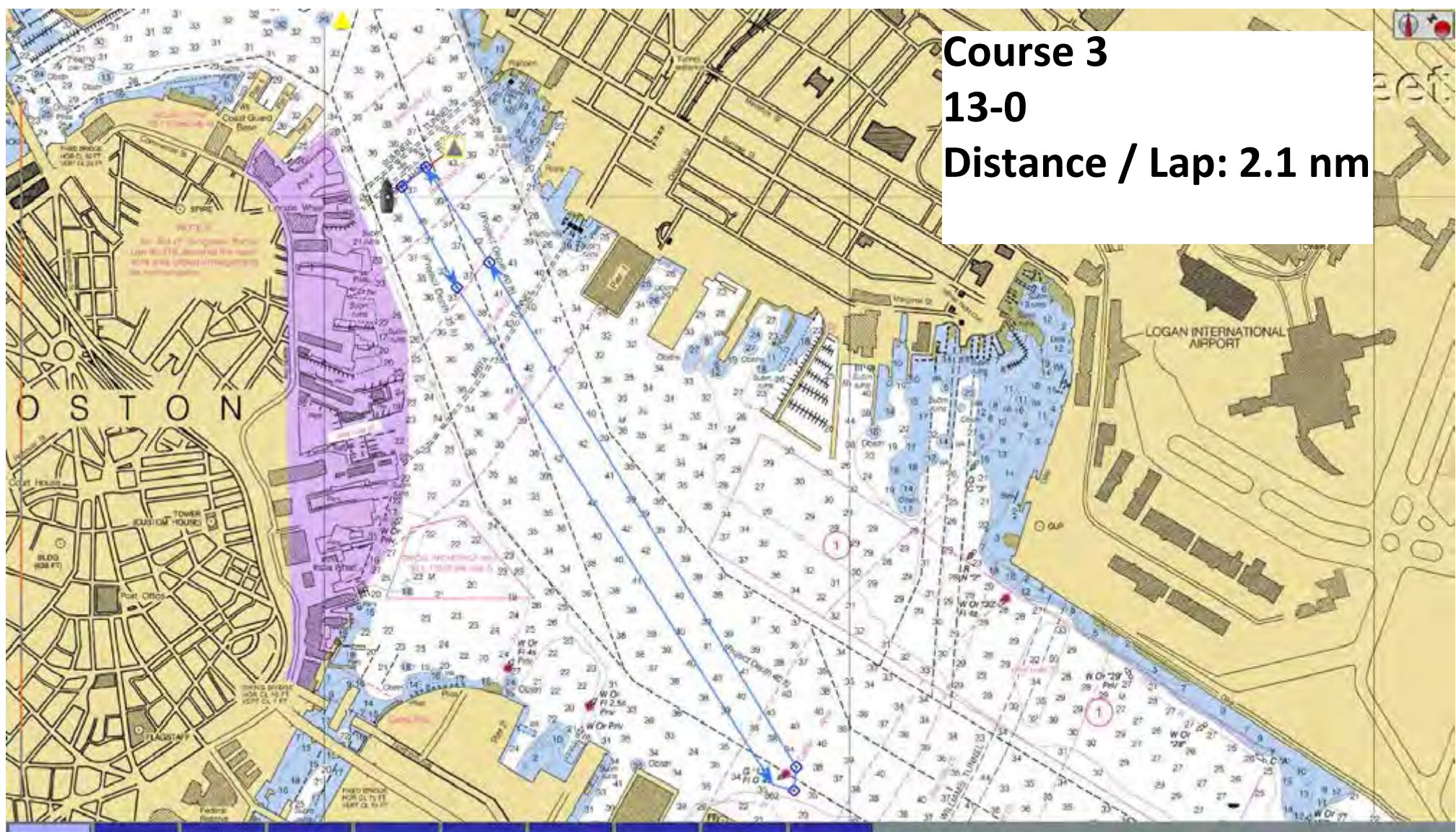


**Course 2**  
**12-Gate-1-0**  
**Distance / Lap: 4.0 nm**



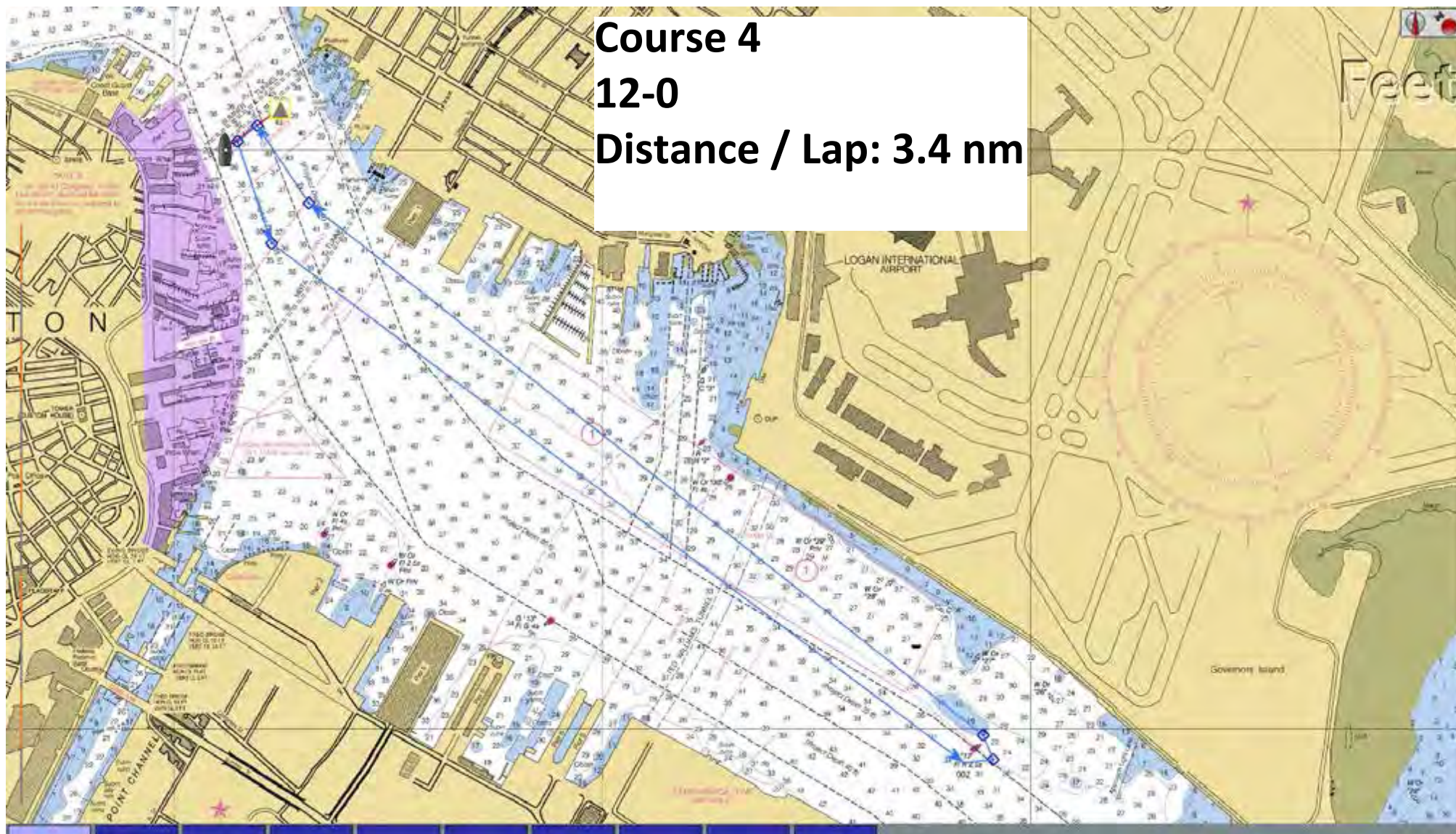


**Course 3**  
**13-0**  
**Distance / Lap: 2.1 nm**



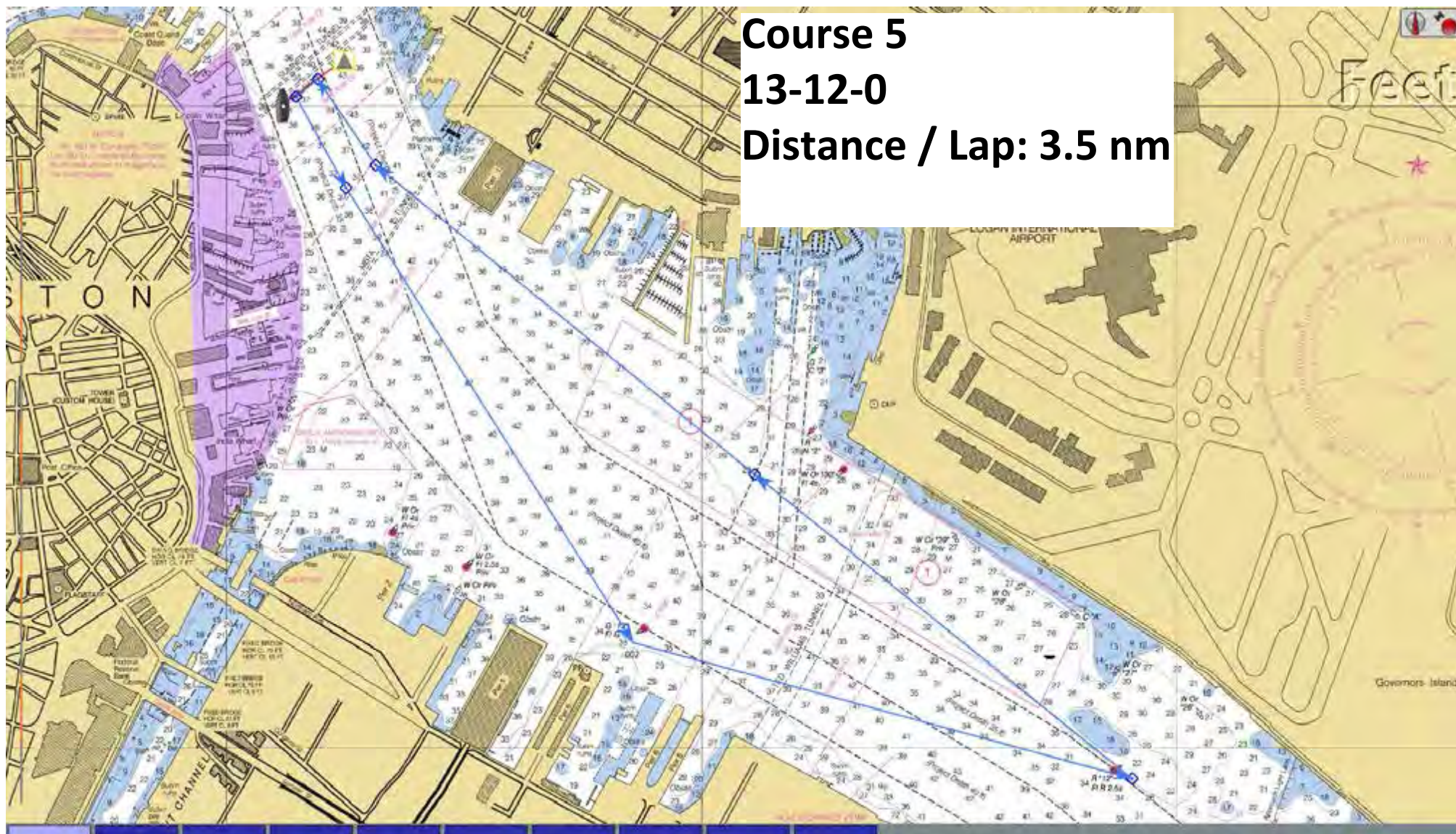


**Course 4**  
**12-0**  
**Distance / Lap: 3.4 nm**



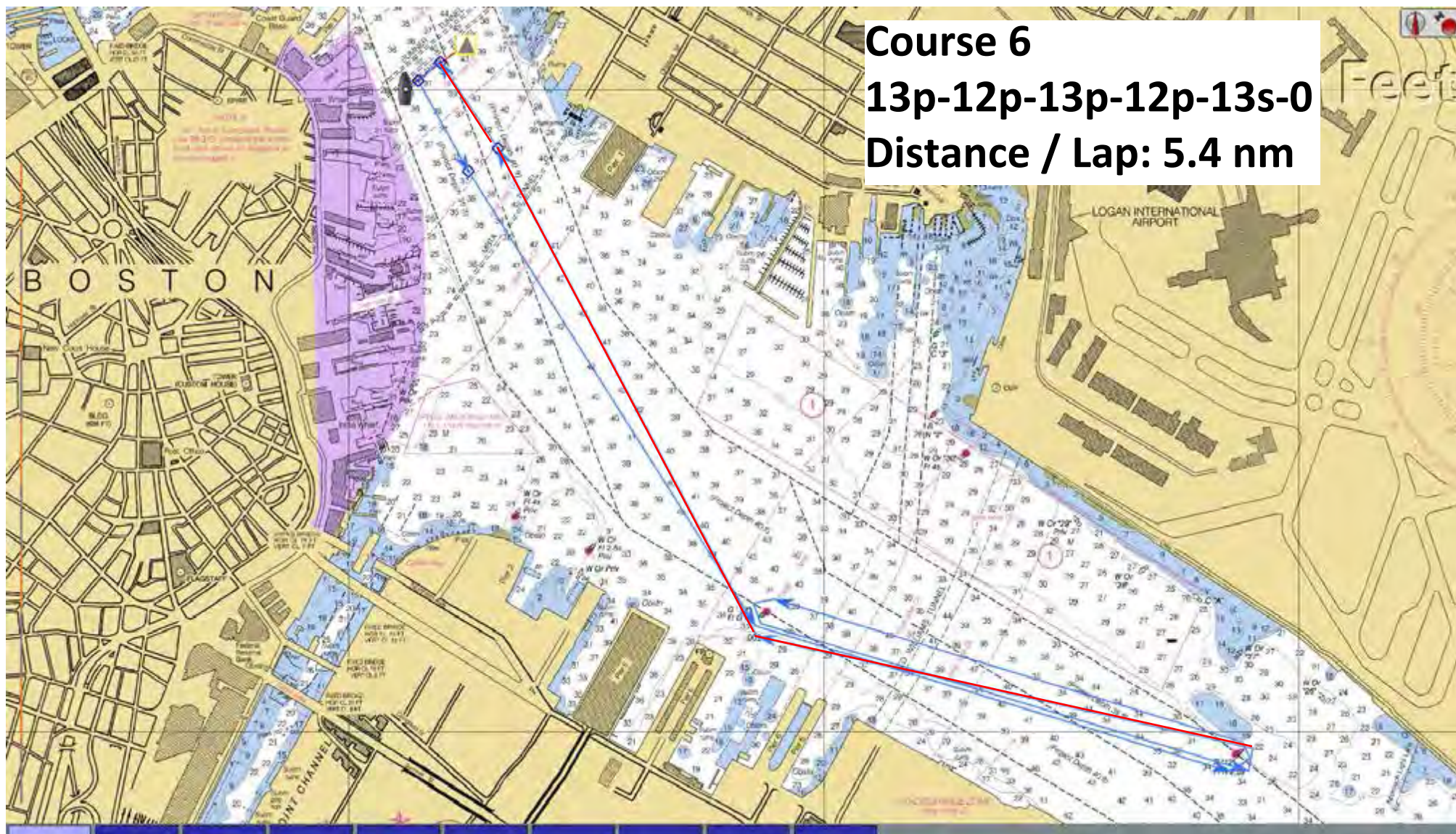


**Course 5**  
**13-12-0**  
**Distance / Lap: 3.5 nm**





**Course 6**  
**13p-12p-13p-12p-13s-0**  
**Distance / Lap: 5.4 nm**

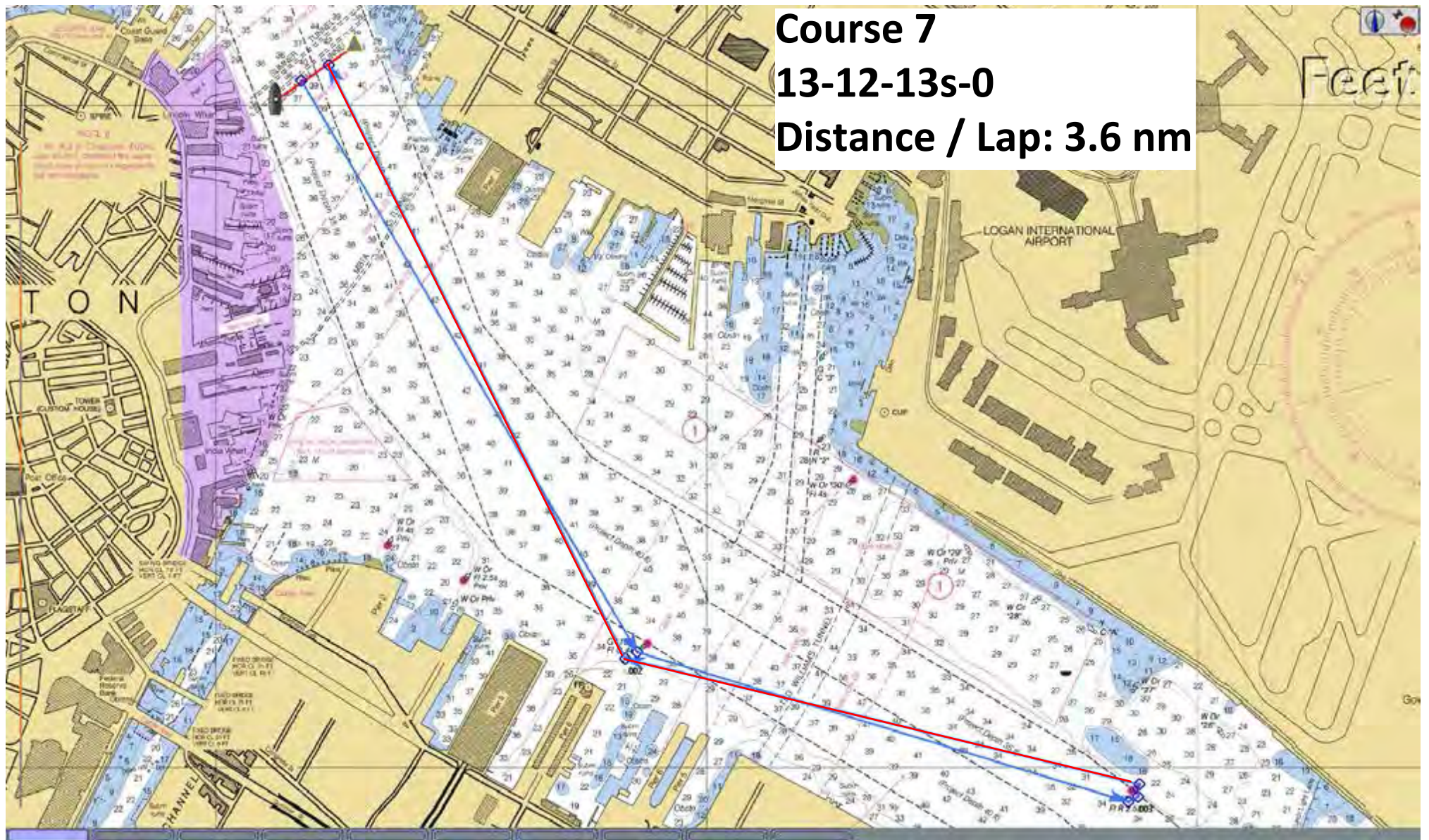




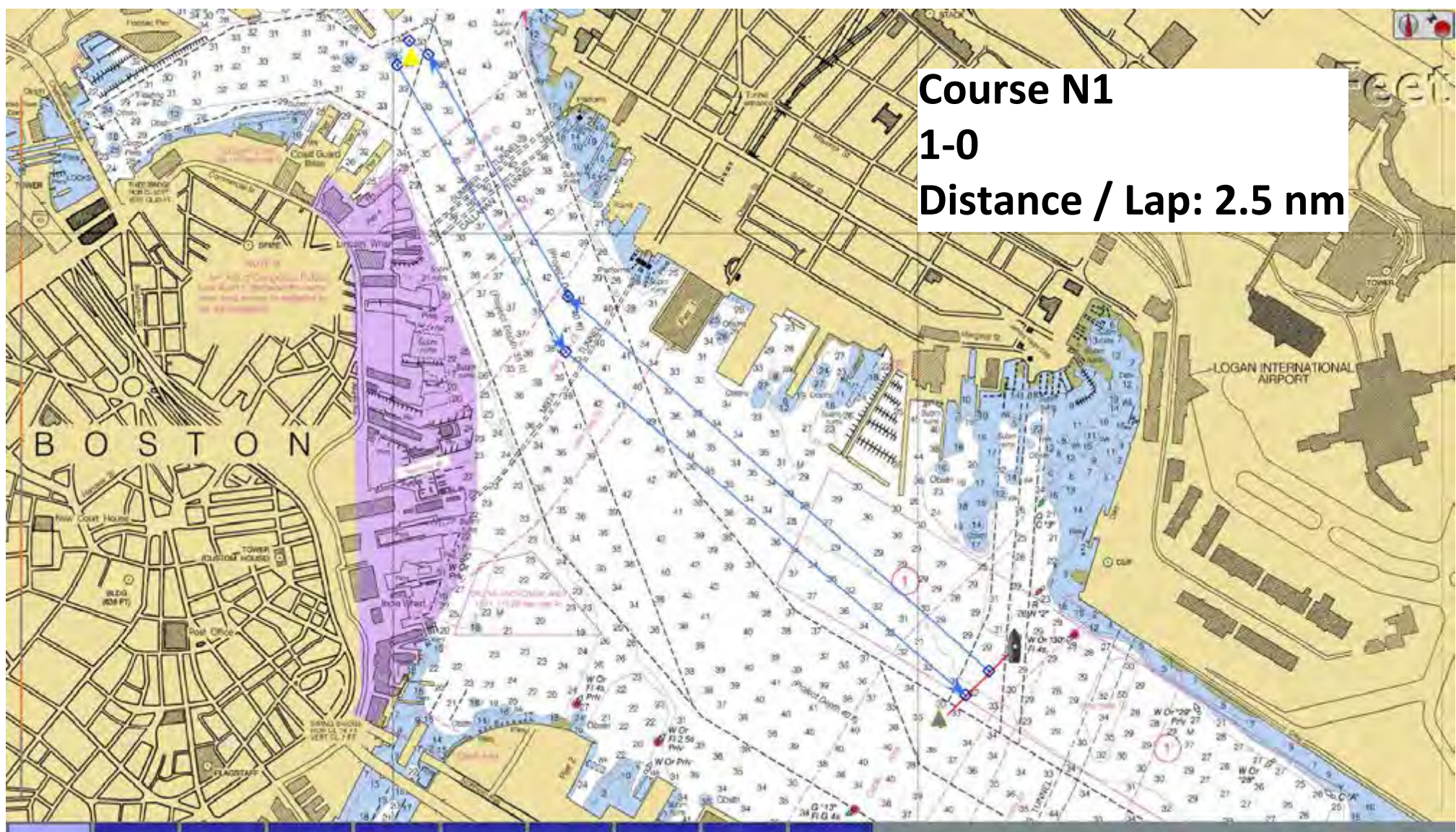
**Course 7**

**13-12-13s-0**

**Distance / Lap: 3.6 nm**



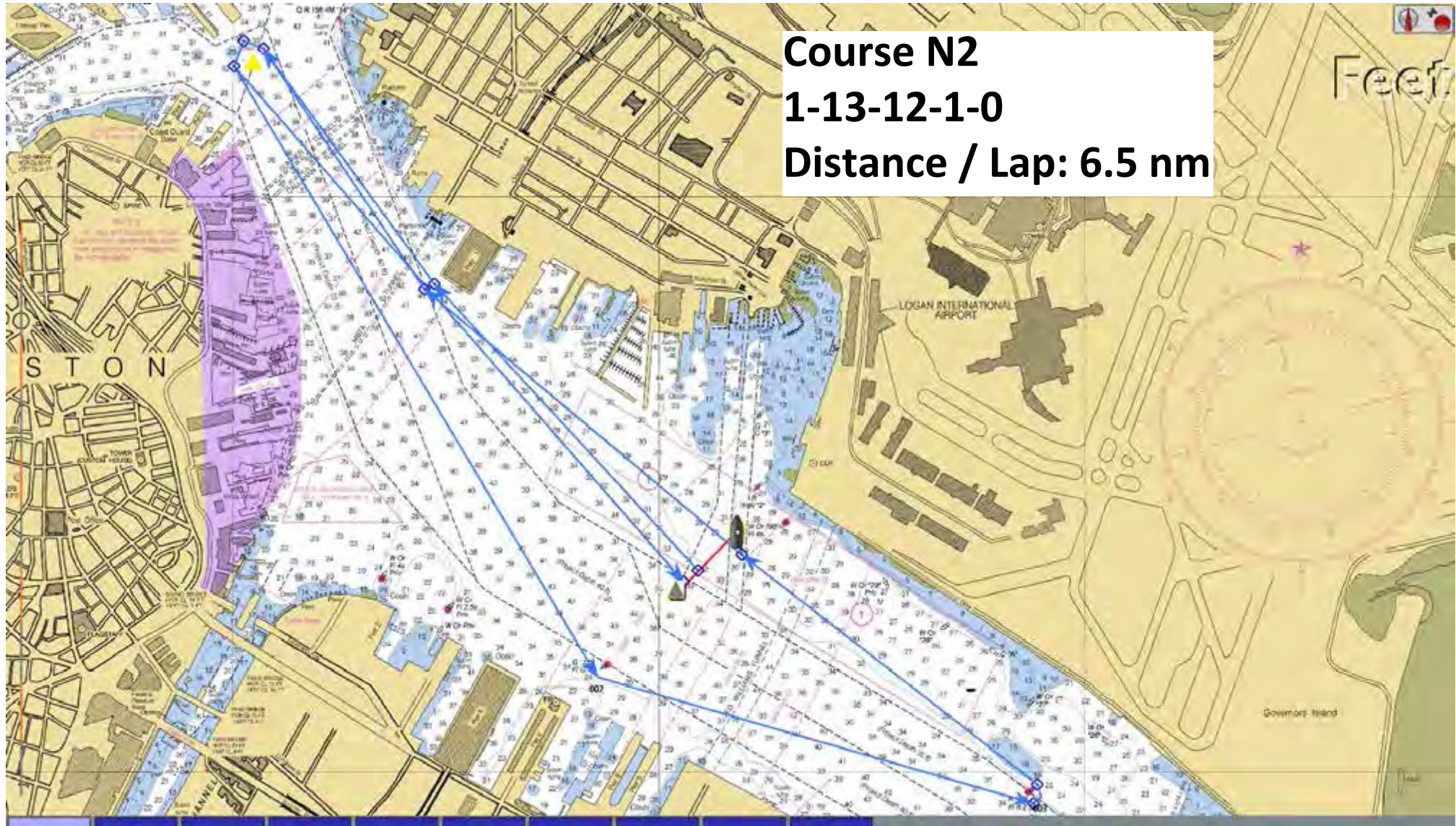




**Course N1**  
**1-0**  
**Distance / Lap: 2.5 nm**

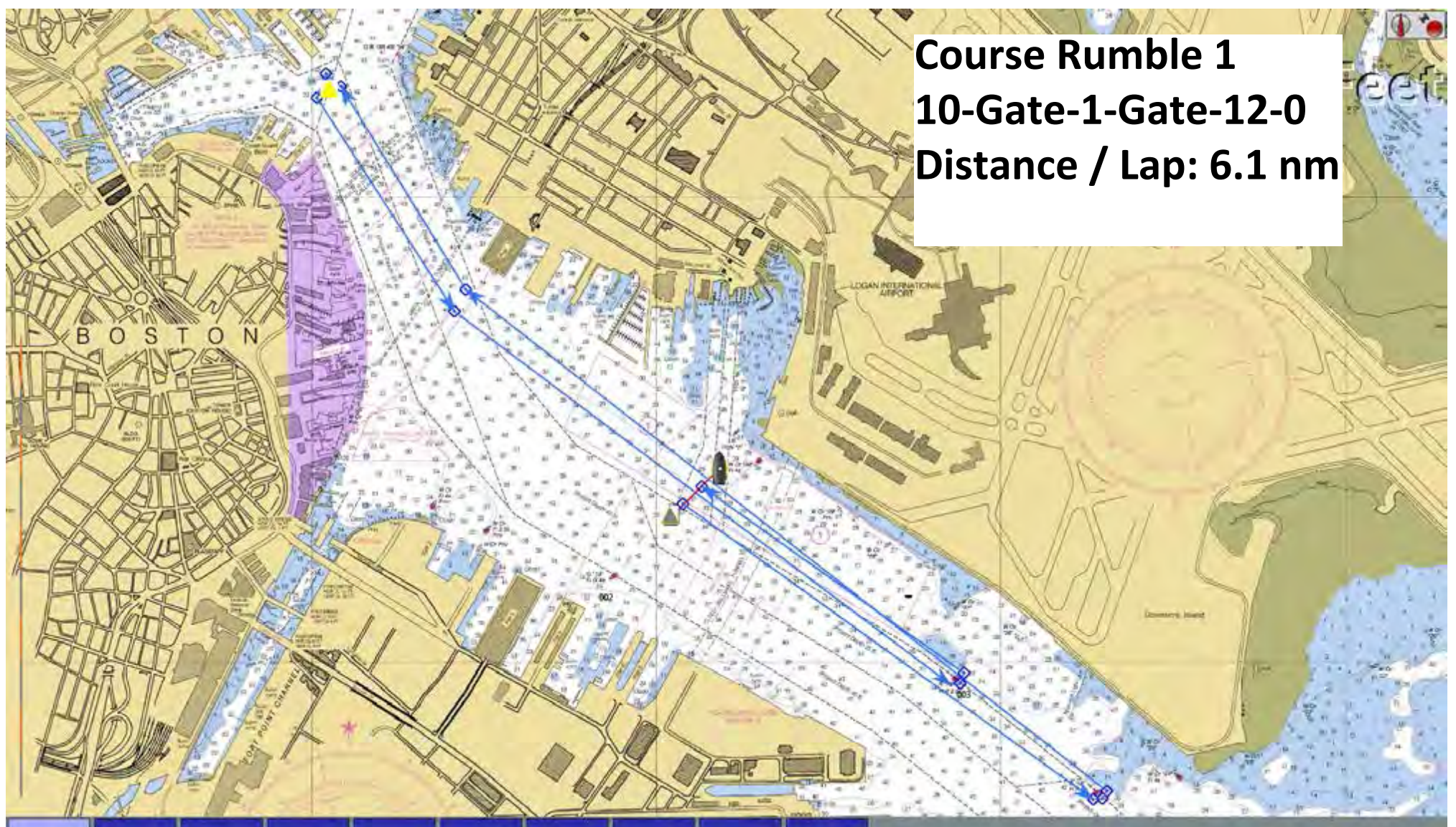


**Course N2**  
**1-13-12-1-0**  
**Distance / Lap: 6.5 nm**





**Course Rumble 1**  
**10-Gate-1-Gate-12-0**  
**Distance / Lap: 6.1 nm**





**Course Rumble 2**  
**10-Gate-1-0**  
**Distance / Lap: 4.7 nm**

