

# Many Thanks To Our Fantastic 2019 Race Sponsors!



**BELTED COW**  
COMPANY



**ETCHELLS FLEET 27**

*Spirited Sailboat Racing On Captivating Casco Bay... Since 2001*



**Smithwick & Mariners Insurance, Inc**

*Local Knowledge ~ Experience Worldwide*

**Schooner Trophy Race**  
July 4, 2019  
Portland Yacht Club  
Falmouth, Maine  
**SAILING INSTRUCTIONS**

**1 RULES**

- 1.1 The regatta will be governed by the rules as defined in *The Racing Rules of Sailing*.
- 1.2 Boats shall sail using only mainsails and headsails or staysails. No boat shall set a spinnaker.

**2 NOTICES TO COMPETITORS**

Notices to competitors will be posted on the official notice board located at the Portland Yacht Club.

**3 CHANGES TO SAILING INSTRUCTIONS**

Any change to the sailing instructions will be posted before 1200, Wednesday, July 4, 2019.

**4 SIGNALS MADE ASHORE**

- 4.1 Signals made ashore will be displayed at Portland Yacht Club.
- 4.2 When flag AP is displayed ashore, '1 minute' is replaced with 'not less than 60 minutes' in the race signal AP.

**5 SCHEDULE OF RACES**

- 5.1\* Date of racing: July 4, 2019
- 5.2 Number of races: 1
- 5.3\* The scheduled time of the warning signal for the first race is 1300.
- 5.4 After a long postponement, to alert boats that a race or sequence of races will begin soon, an orange flag with one sound will be displayed for at least four minutes before a warning signal is displayed.
- 5.5 No warning signal will be made after 1500.
- 5.6 Awards will be presented after racing at the Portland Yacht Club
- 5.7 Barbeque can be purchased at the Portland Yacht Club from 1200-1800

**6 CLASS FLAGS**

Class flags will be:

|              |               |
|--------------|---------------|
| <u>Class</u> | <u>Flag</u>   |
| All Classes  | Signal Flag A |

## **7 RACING AREAS**

The racing area will be in the waters surrounding Clapboard Island.

## **8 THE COURSE**

8.1 The course will be as follows:

Start – H starboard – J starboard – A starboard – G port – Finish.

Distance: 9.65 nautical miles. The course is illustrated on page 4 of these Sailing Instructions.

8.2 Government marks N12 Southwest and N14 West of Clapboard Island must be left on the navigable side, and are considered marks of the course.

## **9 MARKS.**

9.1 Marks will be as described on the attached PYC mark list.

## **10 THE START**

10.1 Races will be started by using rule 26

## **11 SHORTENING THE COURSE**

The Race Committee may shorten the course at any mark of the course by displaying Code Flag "S" and making two sound signals. Boats will then finish between the mark and the Race Committee boat.

## **12 THE FINISH**

The finish line will be between the Race Committee flag on the Signal Boat and Mark A.

## **13 TIME LIMITS AND TARGET TIMES**

Boats failing to finish within 100 minutes after the first boat of its class sails the course and finishes will be scored Did Not Finish without a hearing. This changes rules 35, A4 and A5.

## **14 PROTESTS AND REQUESTS FOR REDRESS**

14.1 Protest forms are available at official notice board. Protests and requests for redress or reopening shall be delivered to the regatta chair within the appropriate time limit.

14.2 The protest time limit is 45 minutes after the last boat has finished the last race of the day.

14.3 Notices will be posted no later than 30 minutes after the protest time limit to inform competitors of hearings in which they are parties or named as witnesses. Hearings will be held in the protest room, located at PYC, beginning at the time posted on the official notice board.

14.4 Notices of protests by the race committee will be posted to inform boats under rule 61.1(b).

## **15 SCORING**

15.1 One (1) race is required to be completed to constitute a series.

## **16 SAFETY REGULATION,**

16.1 Boats shall check in prior to the first warning signal of the day by sailing past the stern on Starboard tack of the RC signal boat and hailing Boat Name, Sail Number, and number of persons aboard.

16.2 A boat that retires from a race shall notify the race committee as soon as possible.

**17 OFFICIAL BOATS**

Official boats will be marked as follows: Display of a RC flag.

**18 TRASH DISPOSAL**

Boats shall not put trash in the water. Trash may be placed aboard support and race committee boats.

**19 RADIO COMMUNICATION**

Except in an emergency, a boat shall neither make radio transmissions while racing nor receive radio communications not available to all boats. This restriction also applies to mobile telephones. The Race Committee will monitor and communicate with the fleet on VHF Channel 71

**20 PRIZES**

Prizes will be given as follows:

1. The PYC perpetual Schooner Trophy will be awarded to the top PYC finisher
2. The top three boats will receive awards.

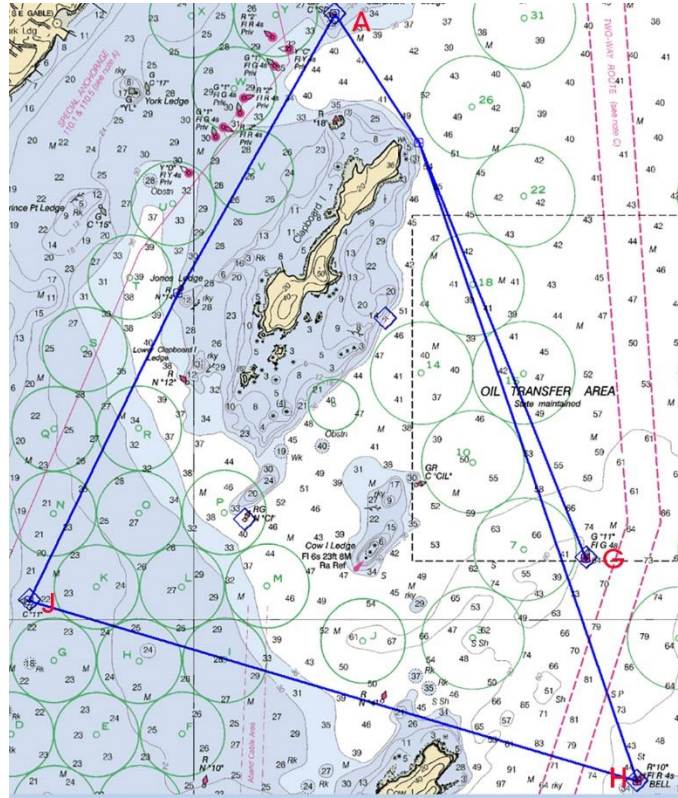
**21 DISCLAIMER OF LIABILITY**

Competitors participate in the regatta entirely at their own risk. See rule 4, Decision to Race. The organizing authority will not accept any liability for material damage or personal injury or death sustained in conjunction with or prior to, during, or after the regatta.

**22 INSURANCE**

Each participating boat shall be insured with valid third-party liability insurance.

# COURSE ILLUSTRATION



| MARK | DESCRIPTION    | LOCATION                    | LAT |       |   | LON |       |   |
|------|----------------|-----------------------------|-----|-------|---|-----|-------|---|
|      |                |                             |     |       |   |     |       |   |
| A    | GR"SI"         | Sturdivant Ledges           | 43  | 43.75 | N | 70  | 11.43 | W |
| B    | W "Danger"     | E of Sturdivant Ledges      | 43  | 43.84 | N | 70  | 11.11 | W |
| C    | N"2"           | S of Basket Is.             | 43  | 43.74 | N | 70  | 9.91  | W |
| D    | R"14" FI R 4s  | W of Indian Point           | 43  | 43.31 | N | 70  | 9.22  | W |
| E    | N"8"           | S of Channel Rocks          | 43  | 42.21 | N | 70  | 8.97  | W |
| F    | N"12"          | W of Channel Rocks          | 43  | 42.16 | N | 70  | 9.71  | W |
| G    | G"11" FI G 4s  | E of Cow Is. Ledge          | 43  | 42.16 | N | 70  | 10.43 | W |
| H    | R"10" FI R 4s  | NW of Ponce Landing         | 43  | 41.51 | N | 70  | 10.23 | W |
| I    | N"4"           | N of Cow Is.                | 43  | 41.75 | N | 70  | 11.23 | W |
| J    | C"11"          | E of The Brothers           | 43  | 42.05 | N | 70  | 12.66 | W |
| K    | N"10"          | NW of Great Diamond Is.     | 43  | 41.51 | N | 70  | 11.95 | W |
| L    | Leeward        | Inflatable Drop Mark        |     |       |   |     |       |   |
| M    | N"8"           | W of Great Diamond Is.      | 43  | 41.08 | N | 70  | 12.60 | W |
| N    | G"7" FI G 4s   | E of Pumpkin Nob            | 43  | 40.49 | N | 70  | 10.80 | W |
| O    | R"6" QR        | Soldier Ledge, Hussey Sound | 43  | 40.33 | N | 70  | 10.56 | W |
| P    | G"3" FI G 4s   | SE end of Hussey Sound      | 43  | 39.82 | N | 70  | 10.07 | W |
| Q    | R"4" FI R 4s   | SE end of Hussey Sound      | 43  | 40.05 | N | 70  | 9.86  | W |
| R    | C"9"           | N of Long Is.               | 43  | 41.80 | N | 70  | 9.67  | W |
| T    | RG "CI"        | W of Cow Is. Ledge          | 43  | 42.28 | N | 70  | 11.80 | W |
| X    | Start / Finish | Inflatable Drop Mark        |     |       |   |     |       |   |