



**PORTLAND YACHT CLUB  
PRESENTS  
THE 2019 PILOT RACE  
JUNE 15, 2019  
SAILING INSTRUCTIONS**



**2019 Sponsors:**



**Smithwick & Mariners Insurance, Inc**  
*Local Knowledge ~ Experience Worldwide*



**1. Rules**

The regatta will be governed by the rules as defined in the current Racing Rules of Sailing.

**2. Entries**

Competitors may enter by delivering a completed entry form and paying the entry fee at [www.regattaman.com](http://www.regattaman.com) by June 13, 2019. Late entries are accepted.

**3. Notices to Competitors**

Notices to competitors will be displayed on the official notice board(s) located on the west outside wall of the Portland Yacht Club.

**4. Changes to Sailing Instructions**

Any changes to the sailing instructions will be posted outside of the Portland Yacht Club by 1100, Saturday, June 15.

**5. Signals Made Ashore**

- 5.1. Signals made ashore will be displayed at the Portland Yacht Club.
- 5.2. When the AP flag is displayed ashore, "1 minute" is replaced with "not less than 60 minutes" in the race signal AP.

**6. Schedule of Races**

- 6.1. A competitors meeting will be held at: 1130, June 15 at the Portland Yacht Club.
- 6.2. The scheduled time of the warning signal for the first race is 1300 June 15.
- 6.3. Subsequent races will be held as soon as possible after the end of the previous race. The Race Committee will attempt to provide at least one race for each class.

The distance from the harbor to the racing area is approximately 1.5 NM.

**7. Class Flags**

For the first race, classes will start in the following order:

<u>Class</u>	<u>Flag</u>
Class A	Letter A
Class B	Letter B
Cruising	Letter C
Etchells	Etchells Class Flag
Laser	Laser Class Flag

**8. Racing Area**

- 8.1. The starting line will be in the waters east of Clapboard Island.
- 8.2. Courses will be set in the waters illustrated on the attached PYC Mark List, Addendum A.

**9. Safety**

- 9.1. Boats shall check in prior to the first warning signal of the day by sailing past the stern on Starboard tack of the RC signal boat and hailing Boat Name, Sail Number, and number of persons aboard.
- 9.2. Boats retiring shall notify the Race Committee by hail on VHF channel 72.

**10. Courses and Marks**

- 10.1. For Classes A, B, and Cruising:
  - 10.1.1. The courses will be designated by the Race Committee on the Signal Vessel mark board using marks as described on the **attached PYC Mark List, Addendum A**
  - 10.1.2. All marks shall be left to **Port**, unless the mark designation is indicated by the color **RED**, in which case, the mark shall be left to **Starboard**.
- 10.2. For One Design Classes; **Lasers, Etchells, and others.**
  - 10.2.1. Courses will be windward/leeward courses using inflatable drop marks. The distance and bearing to the weather drop mark will be displayed on a white board from the Signal Vessel.

- 10.2.2. The Course Designation will be displayed on the Signal Boat Course Board. The Course will be indicated by a number:
- Number 1:** Windward – leeward finish
- Number 2:** Windward – leeward – windward – leeward finish.
- 10.2.3. There will be two windward marks set. The **ORANGE** inflatable mark will be used for the Etchells Class and the **YELLOW** inflatable mark will be used for the Laser Class. Both classes will use the same leeward mark. The leeward mark(s) will be set upwind of the start/finish line. All marks will be left to **Port** unless a leeward gate is used.
- 10.2.4. There will be no offset mark. There may or may not be a leeward gate
- 10.2.5. A race committee boat signaling a change of a leg of the course is a mark as provided in instruction 13.3.

10.3. Courses may be shortened as described by RRS 32.

10.4. The start/finish mark for all classes will be an **Orange tetrahedron or cylinder**.

## 11. The Starting Line

- 11.1. Races will be started by using Rule 26 with the warning signal made 5 minutes before the starting signal.
- 11.2. The starting line will be between the staff displaying the orange flag on the Signal Vessel at the Starboard end and the course side of the Port-end starting mark.

## 12. The Finishing Line

- 12.1. The finishing line will be between the staff displaying the orange flag on the Signal Vessel at the Starboard end and the course side of the Port-end finishing mark.

## 13. Change of the Next Leg of the Course

- 13.1. For Classes A, B and Cruising

The Race Committee will display the letter designation of the new mark. This changes Rule 33 (a) and (b)

- 13.2. For One Design Classes, Rule 33 does not change. To change the next leg of the course, the race committee will move the original mark and indicate the new location at the mark prior to the leg of the new course with Charlie Flag and multiple sounds. A Green placard shall be displayed for mark being moved to the starboard facing upwind. A Red placard shall be displayed for mark being moved to the port facing upwind.
- 13.3. To change the next leg of the course, the race committee can move an inflatable mark or move the finish line.
- 13.4. Except at a gate, boats shall pass between the race committee boat signaling the change of the next leg and the nearby mark, leaving the mark to port and the race committee boat to starboard. This changes rule 28.

## 14. Time Limit

Boats failing to finish 30 minutes after the first boat of its class sails the course and finishes will be scored Did Not Finish without a hearing. This changes Rule 35, and Appendix A4 and A5.

**15. Protests**

- 15.3. Boats intending to protest shall, after finishing or retiring, notify Race Committee at the finishing line of the sail number and/or name of the protested boat.
- 15.4. Protests shall be delivered to the Race Office, located in the PYC Great Room, within 1 hour after the Race Committee Finish Vessel docks. The protest time limit and a list of protests received will be posted on the notice board. Hearings will be held as soon as practicable after racing in the Portland Yacht Club Trophy Room. Protest Forms are available at the PYC Dock House and by the Great Room Bulletin Board.

**16. Scoring**

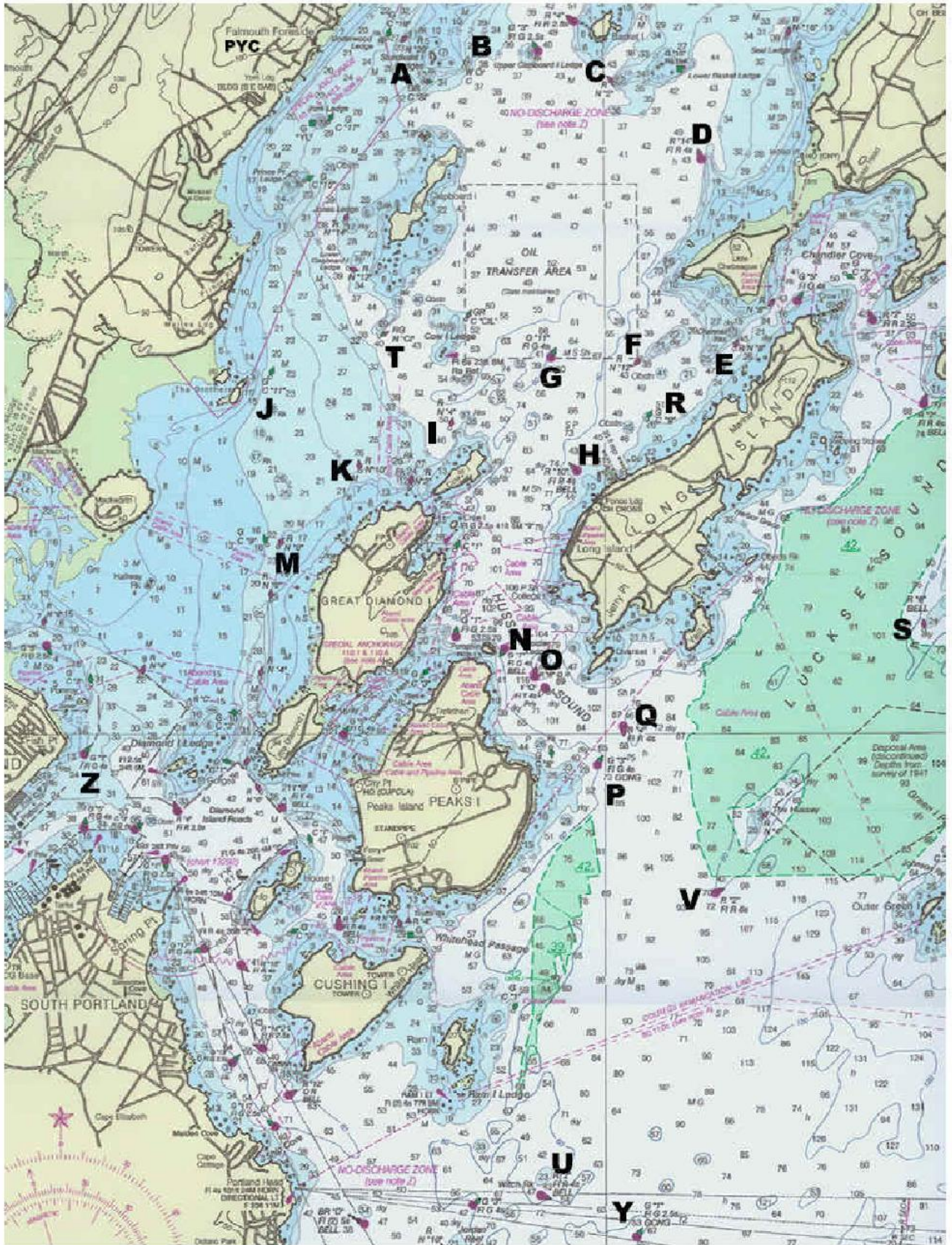
- 16.3. The scoring system is as follows: Appendix A
- 16.4. 1 race is required to be completed to constitute a series for each class.
- 16.3 A boat's series score will be the total of all her race scores.

**17. Radio Communication**

- 17.3. The Race Committee will be communicating to all boats on VHF Channel 72.  
Except in an emergency, a boat shall neither make radio transmissions while racing nor receive radio transmissions not available to all boats. This restriction also applies to mobile telephones.

**MARK CHART, MARK LIST, AND WINDWARD/LEEWARD COURSE  
FOLLOW THIS PAGE.**

# APPENDIX A: MARK CHART AND MARK LIST



MARK	DESCRIPTION	LOCATION	LAT			LON		
A	GR"SI"	Sturdivant Ledges	43	43.75	N	70	11.43	W
B	W "Danger"	E of Sturdivant Ledges	43	43.84	N	70	11.11	W
C	N"2"	S of Basket Is.	43	43.74	N	70	9.91	W
D	R"14" FI R 4s	W of Indian Point	43	43.31	N	70	9.22	W
E	N"8"	S of Channel Rocks	43	42.21	N	70	8.97	W
F	N"12"	W of Channel Rocks	43	42.16	N	70	9.71	W
G	G"11" FI G 4s	E of Cow Is. Ledge	43	42.16	N	70	10.43	W
H	R"10" FI R 4s	NW of Ponce Landing	43	41.51	N	70	10.23	W
I	N"4"	N of Cow Is.	43	41.75	N	70	11.23	W
J	C"11"	E of The Brothers	43	42.05	N	70	12.66	W
K	N"10"	NW of Great Diamond Is.	43	41.51	N	70	11.95	W
L	Leeward	Inflatable Drop Mark						
M	N"8"	W of Great Diamond Is.	43	41.08	N	70	12.60	W
N	G"7" FI G 4s	E of Pumpkin Nob	43	40.49	N	70	10.80	W
O	R"6" QR	Soldier Ledge, Hussey Sound	43	40.33	N	70	10.56	W
P	G"3" FI G 4s	SE end of Hussey Sound	43	39.82	N	70	10.07	W
Q	R"4" FI R 4s	SE end of Hussey Sound	43	40.05	N	70	9.86	W
R	C"9"	N of Long Is.	43	41.80	N	70	9.67	W
T	RG "CI"	W of Cow Is. Ledge	43	42.28	N	70	11.80	W
X	Start / Finish	Inflatable Drop Mark						