

Long Courses

Long Course, 1 or 2 announced by RC

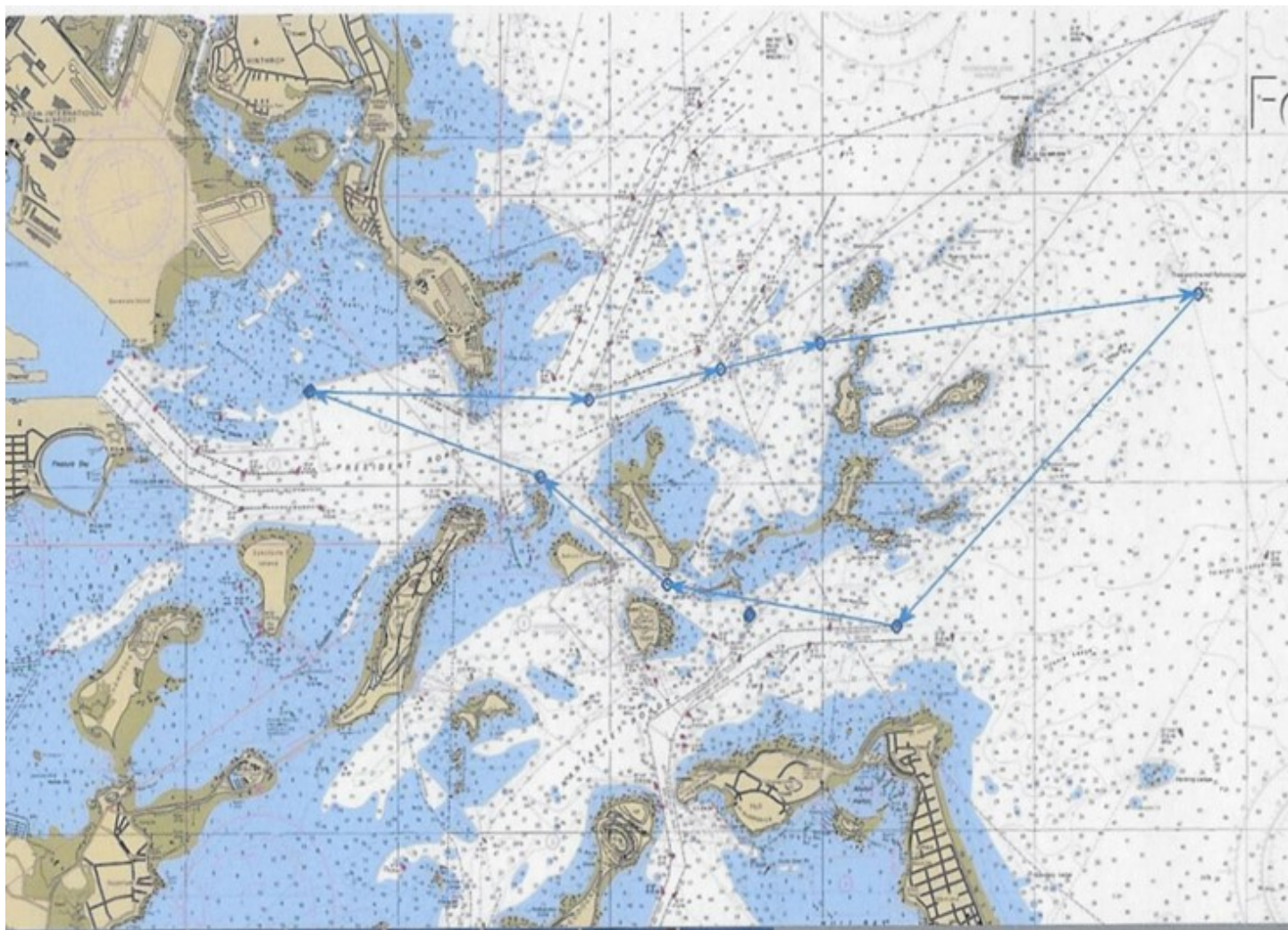
See Mark order and turning direction, SIs #10

Long Course #1 Marks

START (Vicinity of Yellow Nun "E")
MK 1 RG PR Pres Rds Junction (Port)
MK 2 G C "9" S. Channel (Port)
MK 3 R "2" Ent. Hypocrite Ch (Port)
MK 4 R "2" Bell 3 1/2 nm Fathom Ledge (Starboard)
MK 5 R "4" 4/10 N Pt Allerton (Starboard)
MK 6 R "6"SE Lovells Island (Starboard)
MK 7 G "15" NE Nixes Mate (Port)
Finish in the vicinity of Yellow Nun "E"

Long Course #2 Marks

START (Vicinity of Yellow Nun "E")
MK 1 G "15" NE Nixes Mate (Starboard)
MK 2 R "6"SE Lovells Island (Port)
MK 3 R "4" 4/10 N Pt Allerton (Port)
MK 4 R "2" Bell 3 1/2 nm Fathom Ledge (Port)
MK 5 R "2" Ent. Hypocrite Ch (Starboard)
MK 6 G C "9" S. Channel (Starboard)
MK 7 RG PR Pres Rds Junction (Starboard)
FINISH (Vicinity of Yellow Nun "E")



SHORT COURSE

Short Course, 1 or 2 announced by RC

See Mark order and turning direction, SIs #10

Short Course 1

START (Vicinity of Yellow Nun "E")

MK 1 GC "5" Nubble Ch (Starboard)

MK 2 GC "1" Nubble Ch (Starboard)

MK 3 R "4" Off Bass Point (Starboard)

MK 4 G C "5" Off West Head (Starboard))

MK 5 R "2" 4/10 nm W Spectacle Isl (Starboard)

MK 6 G "3" 2/10 nm NW Spectacle (Starboard)

MK 7 G 17" 1/10 nm LI Head (Port)

Short Course 2

START (Vicinity of Yellow Nun "E")

MK 1 G 17" 1/10 nm LI Head (Starboard)

MK 2 G "3" 2/10 nm NW Spectacle (Port)

MK 3 R "2" 4/10 nm W Spectacle Isl.(Port)

MK 4 G C "5" Off West Head (Port)

MK 5 R "4" Off Bass Point (Port)

MK 6 GC "1" Nubble Ch (Port)

MK 7 GC "5" Nubble Ch (Port)

FINISH (Vicinity of Yellow Nun "E")

