

# EYC WOMEN'S IOD INVITATIONAL

## 7-8 SEPTEMBER, 2024

### SAILING INSTRUCTIONS

#### 1. Rules

1.1 The event is governed by the rules as defined in *The Racing Rules of Sailing 2021 - 2024*.

1.2 RRS 62.1 is changed by adding:(e) physical damage not falling within rule 62.1(b) which was due to defective supplied equipment and which a reasonably competent crew would nor have been able to avoid or promptly repair, or is described in SI 25.3(c).

1.3 Boats may not take a one-turn or two-turn penalty from the time they enter the zone of Mark 1 until they leave the zone of Mark 1A.

#### 2. Changes to the Sailing Instructions

2.1 Yes/no questions regarding the Sailing Instructions shall be submitted to the jury in writing.

2.2 Written responses will be posted on the Official Notice Board

2.3 Any change to the SI's will be posted not later than 0830 on the day it will take effect, except that any change to the schedule will be posted by 2000 on the day before it will take effect.

#### 3. Communication With Competitors

3.1 Saturday, September 7, the Official Notice Board will be located at the Pool House of the Eastern Yacht Club.

3.2 Sunday, September 8, the Official Notice Board will be located in the Sailing Center on the ground floor of the Eastern Yacht Club.

3.3 Notices may also be posted on the regatta website: [www.marbleheadiod.com/womens/](http://www.marbleheadiod.com/womens/) or through a regatta WhatsApp group. Website and WhatsApp notices are provided as a courtesy only.

3.4 On the water, the Race Committee will communicate by VHF radio, on Channel 67.

#### 4. Signals Made Ashore

4.1 Signals made ashore will be displayed on the Eastern Yacht Club Yardarm.

4.2 When flag AP is displayed ashore, '1 minute' is replaced with 'no less than 60 minutes' in Race Signals AP.

4.3 Flag 'AP' flown ashore over a numeral pennant means racing is postponed ashore for the number of hours signaled by the numeral pennant.

4.4 Boats shall not leave their mooring while flag AP is displayed on land. Boats leaving their mooring while AP is displayed may be assessed a discretionary penalty (DP) which may be DSQ.

**5. Schedule of Races** (these times change the NOR)

5.1 Saturday, September 7

0900 Competitors Meeting

1130 First Warning

Multiple races to follow

5.2 Sunday, September 8

0900 Competitors Meeting

1100 First Warning

Multiple races to follow

1430 No warning after this time

**6. Class Flags**

The class flag will be the IOD class flag

**7. Racing Area**

See Attachment A

**8. Courses**

8.1 Courses will be windward/leeward courses, the specific designation indicate in the rack on the stern of the signal boat

8.2 The compass bearing to the first mark will also be displayed in the rack

8.2 See Attachment B for course diagrams

**10. Marks**

10.1 Start and finish marks will be green tetrahedrons or Mark Set Bots.

10.2 Rounding marks will be yellow tetrahedrons or Mark Set Bots

10.3 Change marks will be pink tetrahedrons.

10.4 A subsequent change mark will be yellow.

**11. The Start**

11.1 Races will be started using RRS 26 with a countdown for the last 10 seconds broadcast via the VHF radio on channel 67.

11.2 The start line will be between a staff displaying an orange flag on the signal vessel and the course side of the port end starting mark.

11.3 Code flag 'D', flown before or with the preparatory signal means 'Spinnakers shall not be hoisted during this race'.

11.4 The race committee will attempt to hail OCS boats by VHF radio. Failure to hear the hail, delay in hailing, the order in which the hail is given or failure of equipment will not be grounds for redress. This changes RRS 62.1.

11.5 A boat that does not start within 10 minutes after her starting signal will be scored Did Not Start (DNS) without a hearing This changes RRS A4 and A5.

## **12. Change of of Course**

12.1 To change the bearing of next leg of the course, the race will lay a new mark (or move the finishing line) and remove the original mark as soon as practicable, and signal the compass heading to the new mark.

12.2 To change the length of the next leg of the course, the race committee will signal the change using a + or - sign and the new length on the next leg.

## **13. The Finish**

13.1 The finishing line is between a staff displaying a blue flag on the signal boat and the course side of the nearby finish mark.

13.2 Code flag 'A' displayed at the finish means 'no more racing today'.

## **14. Penalty System**

RRS Appendix V 1 will apply.

## **15. Time Limits**

15.1 The time limit for the first boat to round the first mark is 50 minutes. If no boat has rounded the mark within this time period, the race will be abandoned,

15.2 The time limit for the first boat to sail the course and finish will be 2 ½ hours from the start signal

15.3 Boats failing to finish within 30 minutes after the first boat sails the course and finishes will be scored Time Limit Expired (TLE) without a hearing and will be scored 1 point more than the last boat to finish. This changes RRS 35, A5.1, A5.2 ,and A10.

## **16. Protests and Redress Requests**

16.1 Protest forms are available at the Jury Desk at the EYC Pool House on Saturday, September 7 and the EYC Sailing Center on Sunday, September 8.

16.2 Protest time limit is 60 minutes after the Race Committee Signal Boat docks. The docking time will be posted on the official notice board.

16.3 Protests will be heard at the EYC Pool House on Saturday, and in the EYC Model Room on Sunday at the Eastern Yacht Club.

16.4 On Sunday, September 8, requests for redress based on a protest committee decision shall be delivered no later than 30 minutes after the decision was posted. This changes RRS 62.2.

## **17. Scoring**

17.1 The Low Point Scoring System, Appendix A, will apply.

17.2 A maximum of six races will be sailed.

17.3 One (1) race is required to be completed to constitute a series

17.4 When fewer than six (6) races have been completed, a team's series score will be the total of their race scores. When six (6) races have been completed, a team's score will be the total of all their race scores, excluding their worst score.

## **18.1 Safety**

18.1 Each competitor shall provide their own Personal Flotation Device (PFD), approved by the U.S. Coast Guard, and have it available at all times while afloat.

18.2 Competitors under the age of 18 shall wear a PFD at all times while afloat, except briefly while changing or adjusting clothing or personal equipment.

18.3 In an emergency while racing contact the race committee; in the harbor contact the Eastern Dockmaster on VHF 09.

## **19. Breakdowns and Equipment Redress**

19.1 Competitors shall fly code flag 'Q' on their backstay as soon as practicable after they experience a breakdown that affects their finish position, and keep code flag 'Q' as they finish the race.

19.2 Tearing sails, dropping poles or other equipment overboard, or breaking spinnaker poles or pole end fittings shall be specifically exempted from relief. The NA's Technical Chair shall be a witness to hearings in matters of equipment redress.

## **20. Boat Assignments**

20.1 At 0900 on Friday, September 6, teams shall draw for the boat they will sail in the series. If a team is not present, the RC will draw their boat assignment on their behalf.

20.2 Teams shall not be allowed to compete in a boat that their helmsperson OR any crewmember regularly sails, except that the actions of the Marblehead Fleet Technical Committee under the provisions of SI 23 may cause helmsperson or crew member to sail their personal boat. In this specific case, there shall be no penalty or redress allowed.

## **21. Boats and Equipment**

21.1 [dp] These borrowed boats are to be sailed 'as is' with no temporary or permanent modifications are to be made to the hull, sails or rigging, as well as the provided equipment, except as provided in the Notice of Race, Sailing Instructions, or the Technical Committee Chair

21.2 Boats should be returned to their assigned moorings following each day of practice and/or racing. Technical Committee members will be available to help locate the appropriate moorings.

## **22. Prohibited Actions**

22.1 Upper and lower shroud and forestry changes are prohibited.

22.2 Modifications of the chocking at the mast step and partners are prohibited.

22.3 Automatic bilge pumps shall not be disconnected or disabled. Boats shall not be raced with any significant amount of water in the bilge. Also, water may not be added to the boats.

22.4 No purchase shall be added to or removed from any part of the running rigging,

22.5 No holes may be made in any sails, or in any other part of the boat's finish; small holes will be considered damage .

22.6 Teams may not facilitate roll tacking or gybing by supporting their weight outside the extensions of the topsides above the shearline by means of holding or hanging off the upper and/or lower shrouds.

22.7 Jibs may not be tied to head stays.

22.8 The hulls may not be scrubbed, washed, wet-sanded or otherwise treated below the waterline.

## **23. Permitted Actions**

23.1 Except as prohibited in SI 22.1, all fittings or equipment designated to be adjusted, including backstays and jumper stays within the limits provided

23.2 Competitors may bring and use their own spinnaker sheets and/or launching bags or systems, as long as their use does not compromise the integrity of the boat.

23.3 A magnetic compass may be tied or taped (using electrical or vinyl tape) to the hull or spars.

23.4 Wind indicators may be tied or taped (using electrical or vinyl tape) anywhere on the boat. (See SI 21.1)

24.5 Electrical tape or vinyl tape (not cloth-backed or duct tape) may be used anywhere above the waterline. Competitors will be responsible for the removal of any markings left on the boats, or any damage to the varnish, paint or any other finish caused by the application of tape.

24.6 Topsides, sails, and equipment may be cleaned, but only with non-abrasive materials

## **24. Damage Reports and Penalties**

24.1 Competitors shall report any damage or loss of equipment, however slight, to the Organizing Authority representative, by completing and submitting a damage report form immediately after securing the boat.

24.2 Damage reports must also be completed before boarding the spare boat, if it is needed.

24.3 Each skipper shall complete a damage report at the completion of each day of racing.

24.4 The damage report will be signed by the skipper and delivered to the Technical Committee at the end of racing each day.

## **25. Damaged Boat Procedure**

25.1 The Marblehead Fleet will supply at least one spare boat.

25.2 The Invitational Technical Committee will withdraw damaged boats from the rotation, and allocate the spare boat(s) in whatever manner they deem appropriate.

25.3 If there are more damaged boats than available spare boats:

(a) If damage that caused a boat to be withdrawn from the regatta has been attributed to a team by the jury, then that team shall not compete in any further races until the damaged boat

or a replacement boat becomes available. That team will be scored DNC for all missed races.

(b) If the damage that caused a boat to be withdrawn from the rotation was not completely and accurately reported on a damage report, that team shall not compete in any further races until the damaged boat or a replacement boat becomes available. That team will be scored DNC for all missed races.

(c) A team scheduled to sail a boat that has been withdrawn and not replaced by a spare boat will receive redress, defined as the teams' average score of all races they sailed, for all races missed.

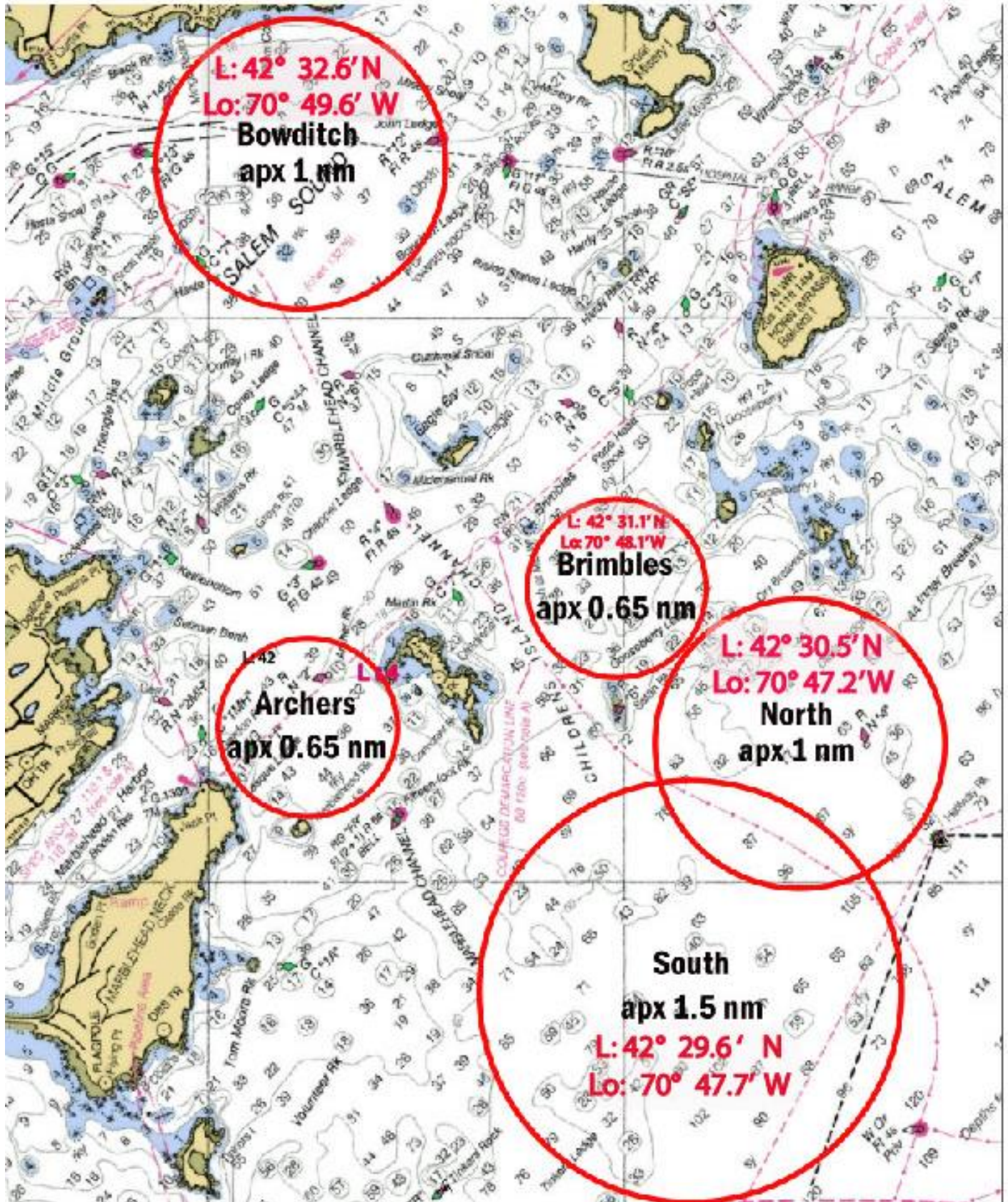
25.4 If a boat incurs a breakdown during a race through no fault of the team sailing her, that team may file for redress in accordance with SI 1.4 and rule 62.



# Appendix A

# MARBLEHEAD 2024 SAILING AREA

(this chart is not to be used for navigation)



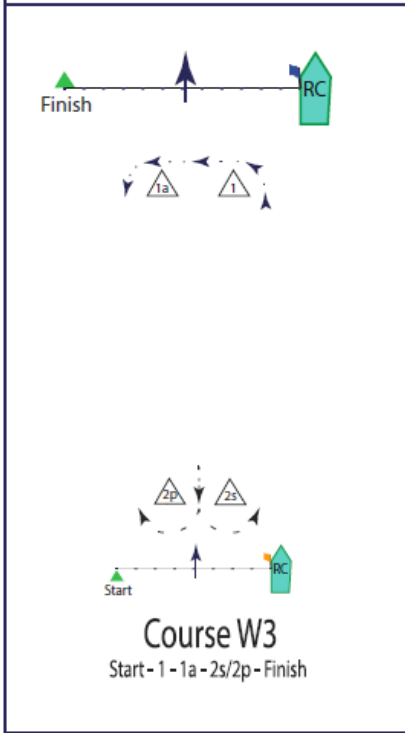




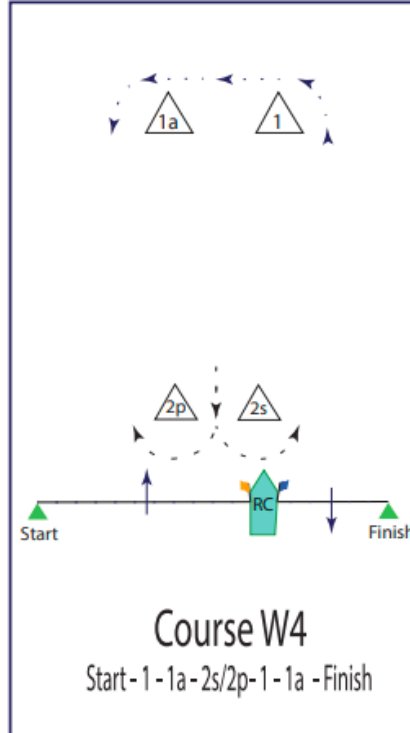
# APPENDIX B

## COURSE SHAPES

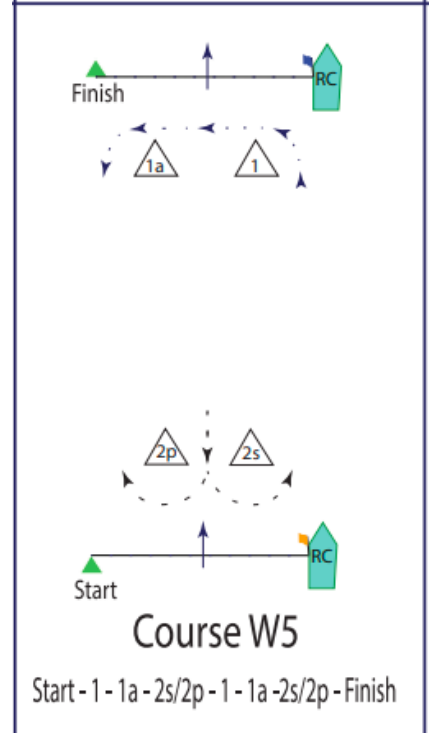
### W3



### W4



### W5



### M3

