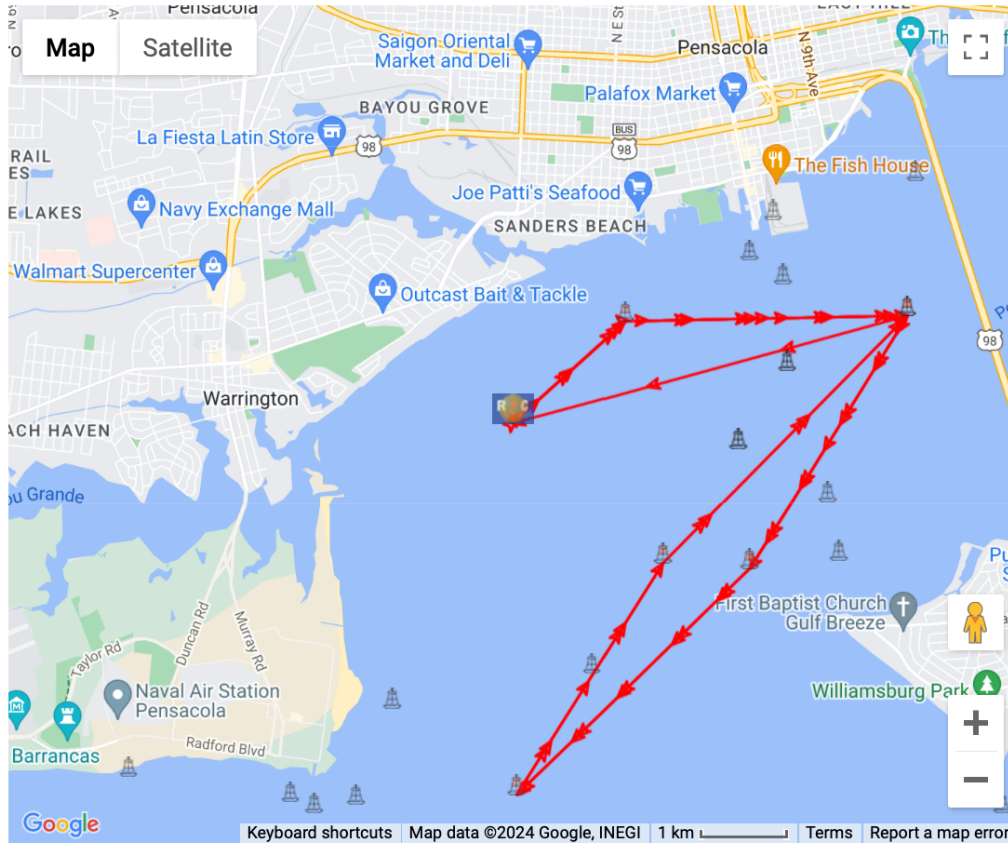


Appendix A to NOR PYC Double Handed Regatta: Courses Defined
 Course #3 (North Long) Start between RC Vessel and Orange Tetrahedron-As-Cs-Hp-Kp-Ip-
 Cp-Finish between RC Vessel and Orange Tetrahedron



Export Table		Mark Data					Leg Data	
(re-order)	Mark	ID	Type	Actions	Location	Description	Dist To	(True) Hdg To
	1		Start	DEL Dup as Finish	Lat: 30° 22.8768N Lon: 87° 14.5698W	Drop Mark	0.00 NM	000°
	2	A	Mark	DEL	Lat: 30° 23.5308N Lon: 87° 13.7346W	Beginning of Bayou Chico Channel FI R 2.5s	0.97 NM	047°
	3	C	Mark	DEL	Lat: 30° 23.5638N Lon: 87° 11.649W	Three Mile Bridge Channel Marker	1.80 NM	088°
	4	H	Mark	DEL	Lat: 30° 21.9516N Lon: 87° 12.8136W	Fair Point Light 2 FI R 6s	1.90 NM	211°
	5	K	Mark	DEL	Lat: 30° 20.5122N Lon: 87° 14.532W	Pensacola Bay Lighted Buoy 21 FI G 2.5s	2.07 NM	225°
	6	I	Mark	DEL	Lat: 30° 21.987N Lon: 87° 13.458W	Pensacola Bay Lighted Buoy 25 FI G 2.5s	1.74 NM	032°
	7	C	Mark	DEL	Lat: 30° 23.5638N Lon: 87° 11.649W	Three Mile Bridge Channel Marker	2.22 NM	044°
	8		Finish	DEL Send Link	Lat: 30° 22.8768N Lon: 87° 14.5698W	Drop Mark	2.61 NM	254°
ADD NEW MARK		Times Around (1) : Course Length					13.31 nm	

