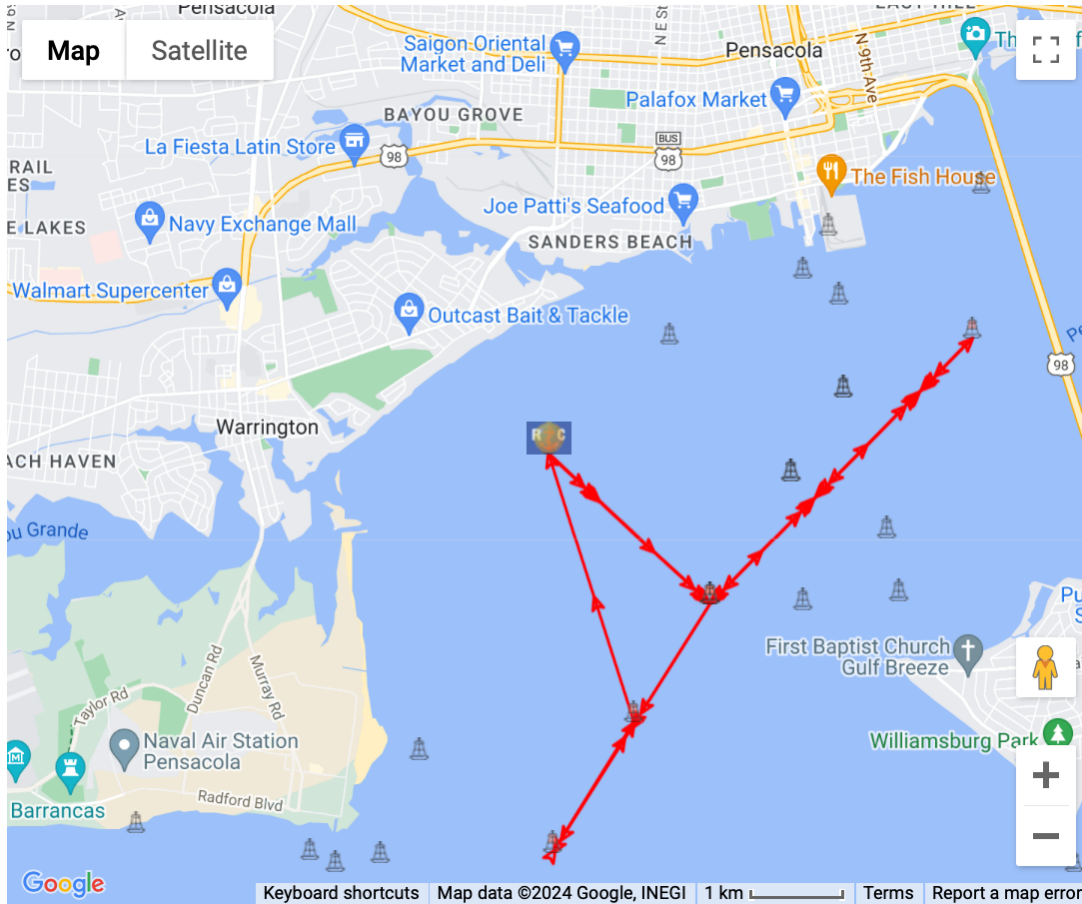


Appendix F to NOR PYC Double Handed Regatta: Courses Defined
 Course #8 (East Short) Start between RC Vessel and Orange Tetrahedron -lp-Cp-lp-Ks-Jp-
 Finish between RC Vessel and Orange Tetrahedron



Export Table		Mark Data					Leg Data	
(re-order)	Mark	ID	Type	Actions	Location	Description	Dist To	(True) Hdg To
	1		Start	DEL Dup as Finish	Lat: 30° 22.8768N Lon: 87° 14.5698W	Drop Mark	0.00 NM	000°
	2	I	Mark	DEL	Lat: 30° 21.987N Lon: 87° 13.458W	Pensacola Bay Lighted Buoy 25 FI G 2.5s	1.31 NM	132°
	3	C	Mark	DEL	Lat: 30° 23.5638N Lon: 87° 11.649W	Three Mile Bridge Channel Marker	2.22 NM	044°
	4	I	Mark	DEL	Lat: 30° 21.987N Lon: 87° 13.458W	Pensacola Bay Lighted Buoy 25 FI G 2.5s	2.22 NM	224°
	5	K	Mark	DEL	Lat: 30° 20.5122N Lon: 87° 14.532W	Pensacola Bay Lighted Buoy 21 FI G 2.5s	1.74 NM	212°
	6	J	Mark	DEL	Lat: 30° 21.2862N Lon: 87° 13.9746W	Pensacola Bay Lighted Buoy 23 FI G 4s	0.91 NM	031°
	7		Finish	DEL Send Link	Lat: 30° 22.8768N Lon: 87° 14.5698W	Drop Mark	1.67 NM	342°
ADD NEW MARK				Times Around (1) : Course Length			10.07 nm	