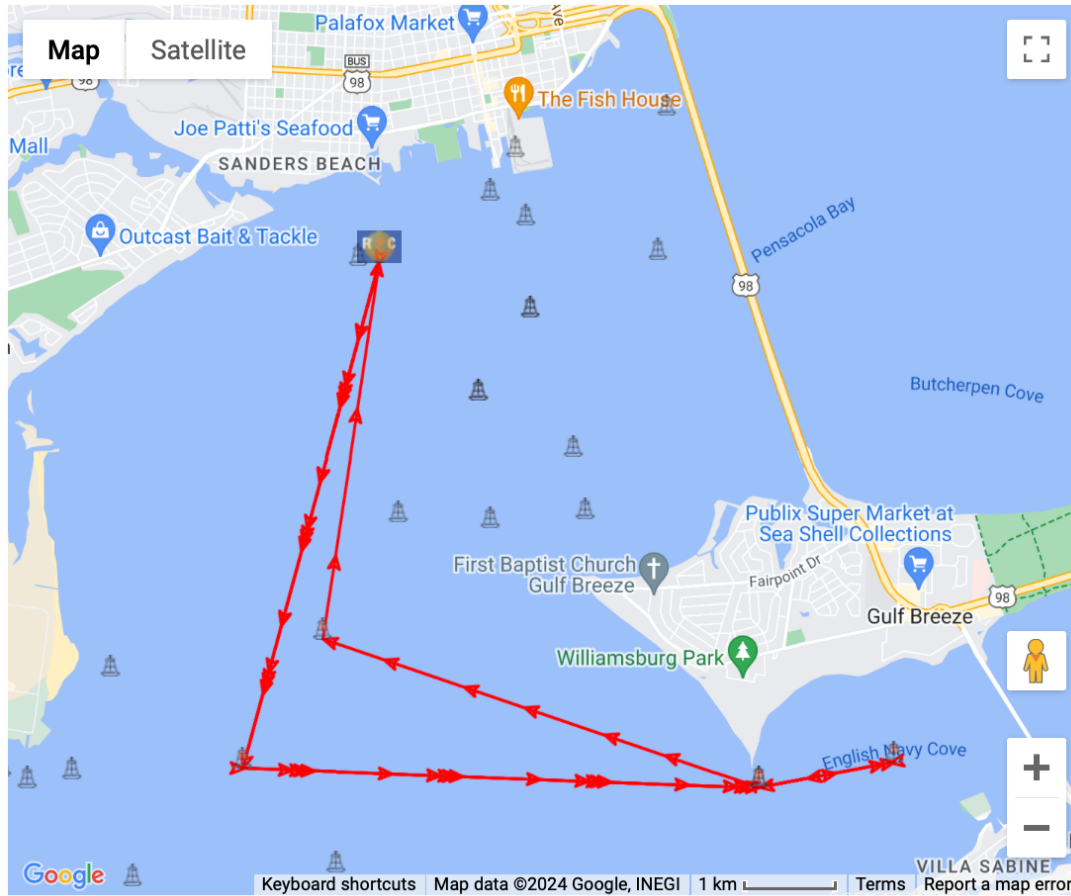


Appendix C to NOR PYC Double Handed Regatta: Courses Defined
 Course #5 (South Long) Start between RC Vessel and Orange Tetrahedron -Kp-Lp-Mp-Ls-Js
 -Finish between RC Vessel and Orange Tetrahedron



Export Table		Mark Data					Leg Data	
(re-order)	Mark	ID	Type	Actions	Location	Description	Dist To	(True) Hdg To
	1		Start		Lat: 30° 23.5452N Lon: 87° 13.5918W		0.00 NM	000°
	2	K	Mark		Lat: 30° 20.5122N Lon: 87° 14.532W	Pensacola Bay Lighted Buoy 21 FI G 2.5s	3.14 NM	194°
	3	L	Mark		Lat: 30° 20.3976N Lon: 87° 10.947W	Deer Point FI R 4s	3.10 NM	092°
	4	M	Mark		Lat: 30° 20.55N Lon: 87° 10.0116W	Between Deer Point & Pensacola Beach Bridge FI R 2.5s	0.82 NM	079°
	5	L	Mark		Lat: 30° 20.3976N Lon: 87° 10.947W	Deer Point FI R 4s	0.82 NM	259°
	6	J	Mark		Lat: 30° 21.2862N Lon: 87° 13.9746W	Pensacola Bay Lighted Buoy 23 FI G 4s	2.76 NM	288°
	7		Finish		Lat: 30° 23.5452N Lon: 87° 13.5918W		2.28 NM	008°
				Times Around (1) : Course Length			12.92 nm	