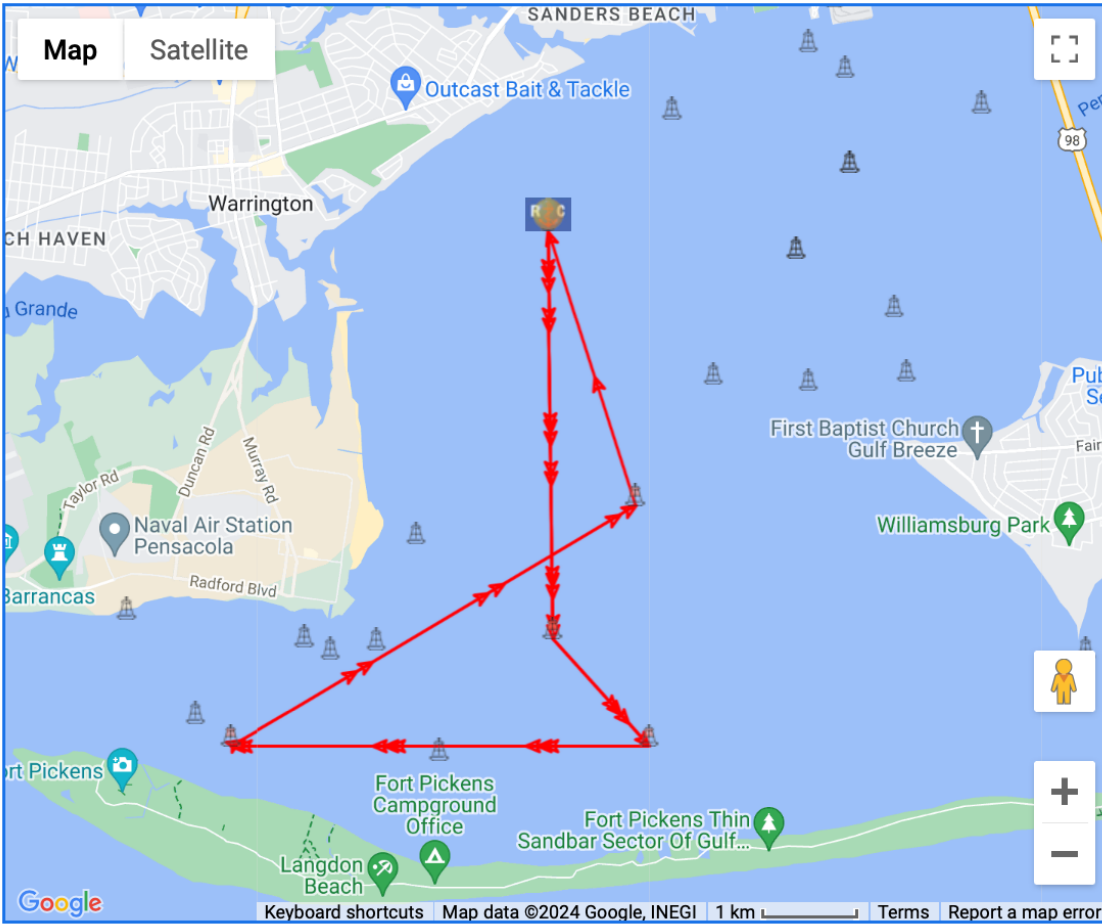


Appendix D to NOR PYC Double Handed Regatta: Courses Defined
 Course #6 (South Short) Start between RC Vessel and Orange Tetrahedron -Kp-Ns-Rs-Jp-
 Finish between RC Vessel and Orange Tetrahedron



Export Table		Mark Data					Leg Data		
(re-order)	Mark	ID	Type	Actions	Location	Description	Dist To	(True) Hdg To	
	1		Start		Lat: 30° 22.8768N Lon: 87° 14.5698W		0.00 NM	000°	
	2	K	Mark		Lat: 30° 20.5122N Lon: 87° 14.532W	Pensacola Bay Lighted Buoy 21 FI G 2.5s	2.36 NM	179°	
	3	N	Mark		Lat: 30° 19.8936N Lon: 87° 13.8894W	Pensacola Bay off Santa Rosa Island FI G 2.5s	0.83 NM	138°	
	4	R	Mark		Lat: 30° 19.8918N Lon: 87° 16.6992W	Pensacola Bay off Santa Rosa Island FI R 4s	2.43 NM	269°	
	5	J	Mark		Lat: 30° 21.2862N Lon: 87° 13.9746W	Pensacola Bay Lighted Buoy 23 FI G 4s	2.73 NM	059°	
	6		Finish		Lat: 30° 22.8768N Lon: 87° 14.5698W		1.67 NM	342°	
		Times Around (1) : Course Length					10.02 nm		

