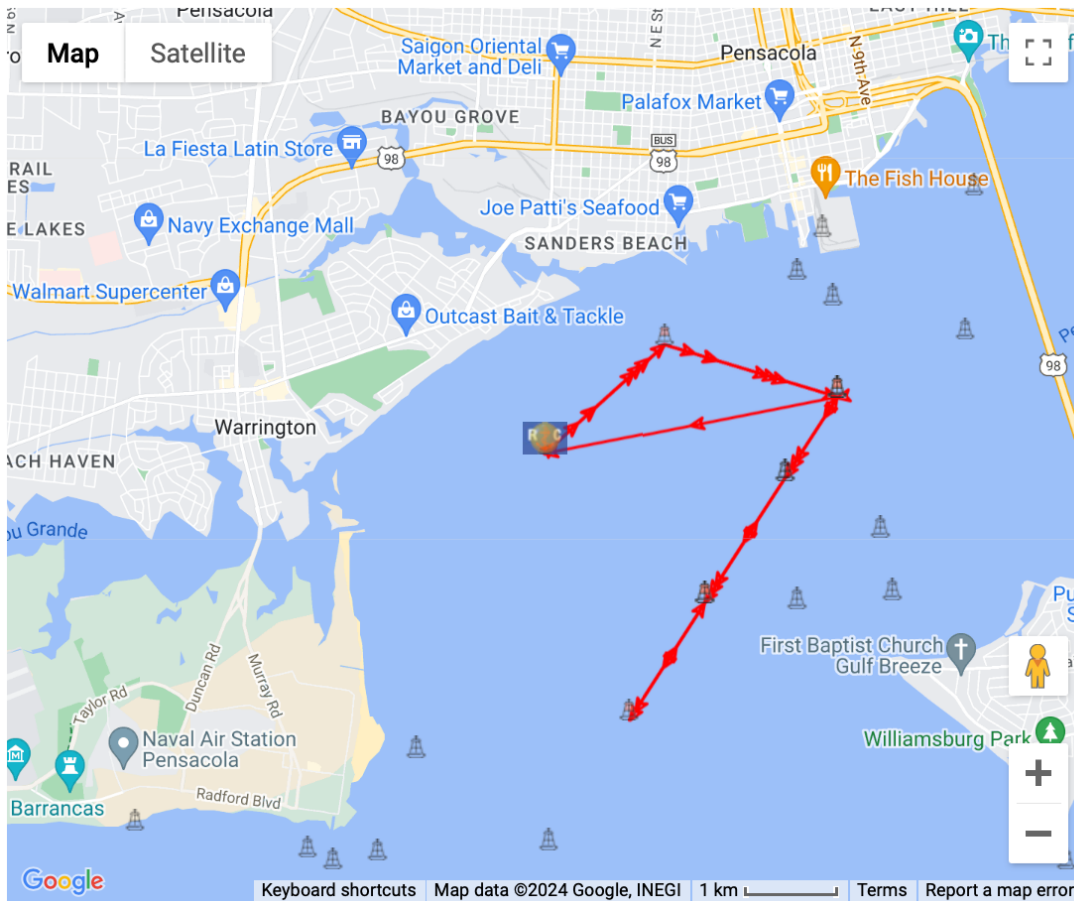


Appendix B to NOR PYC Double Handed Regatta: Courses Defined  
 Course #4 (North Short) Start between RC Vessel and Orange Tetrahedron -As-Ds-Ip-Jp-Is-  
 Dp-Finish between RC Vessel and Orange Tetrahedron



Export Table		Mark Data					Leg Data	
(re-order)	Mark	ID	Type	Actions	Location	Description	Dist To	(True) Hdg To
	1		Start	DEL Dup as Finish	Lat: 30° 22.8768N Lon: 87° 14.5698W	Drop Mark	0.00 NM	000°
	2	A	Mark	DEL	Lat: 30° 23.5308N Lon: 87° 13.7346W	Beginning of Bayou Chico Channel FI R 2.5s	0.97 NM	047°
	3	D	Mark	DEL	Lat: 30° 23.2122N Lon: 87° 12.54W	Bay Channel 29 Q G	1.08 NM	107°
	4	I	Mark	DEL	Lat: 30° 21.987N Lon: 87° 13.458W	Pensacola Bay Lighted Buoy 25 FI G 2.5s	1.46 NM	212°
	5	J	Mark	DEL	Lat: 30° 21.2862N Lon: 87° 13.9746W	Pensacola Bay Lighted Buoy 23 FI G 4s	0.83 NM	212°
	6	I	Mark	DEL	Lat: 30° 21.987N Lon: 87° 13.458W	Pensacola Bay Lighted Buoy 25 FI G 2.5s	0.83 NM	032°
	7	D	Mark	DEL	Lat: 30° 23.2122N Lon: 87° 12.54W	Bay Channel 29 Q G	1.46 NM	032°
	8		Finish	DEL Send Link	Lat: 30° 22.8768N Lon: 87° 14.5698W	Drop Mark	1.78 NM	259°
ADD NEW MARK				Times Around (1)  : Course Length			8.41 nm	