

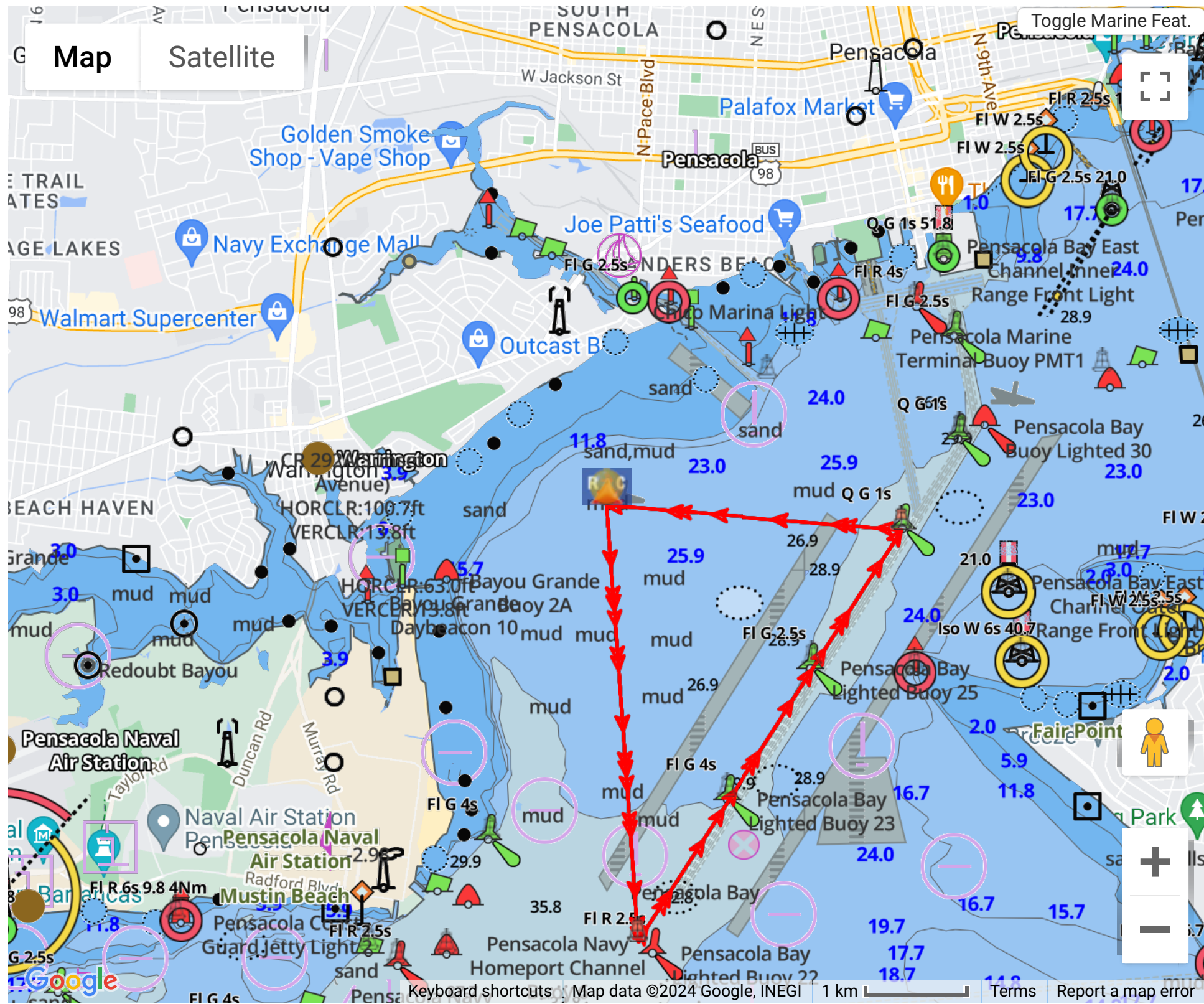
# Course: #6 Cruising WFORC triangle 2 laps 13.08

For HELP on using this tool, click [HERE](#)

Return

HIDE MAP

Map Legend: = Start = Finish = Govt (unused) = Govt (used) = Drop Mark = Gate = Offset = Waypoint



\*\* Drop Marks (not from preset list) may be placed by clicking anywhere on map OR use the "Add New Mark" button below.

Refresh Map Wind Map

Lat/Lon Format
REVERSE
DELETE
RENAME
QUICK RENAME
Export GPX
Not Using Predicted Course

Export Table		Mark Data						Leg Data	
(re-order)	Mark	ID	Type	Actions	Location	Description	Dist To	(True) Hdg To	
	1		Start	<span>DEL</span> <span>Dup as Finish</span>	Lat: 30° 22.8492N Lon: 87° 14.7306W	<span>Drop Mark</span>	0.00 NM	000°	
	2	K	Mark	<span>DEL</span>	Lat: 30° 20.5122N Lon: 87° 14.532W	Pensacola Bay Lighted Buoy 21 FI G 2.5s	2.34 NM	175°	
	3	E	Mark	<span>DEL</span>	Lat: 30° 22.7208N Lon: 87° 12.9018W	Bay Channel 27 Q G	2.62 NM	032°	
	4		Mark	<span>DEL</span> <span>Send Link</span>	Lat: 30° 22.8492N Lon: 87° 14.7306W	<span>Drop Mark</span>	1.58 NM	274°	
	5	K	Mark	<span>DEL</span>	Lat: 30° 20.5122N Lon: 87° 14.532W	Pensacola Bay Lighted Buoy 21 FI G 2.5s	2.34 NM	175°	
	6	E	Mark	<span>DEL</span>	Lat: 30° 22.7208N Lon: 87° 12.9018W	Bay Channel 27 Q G	2.62 NM	032°	
	7		Finish	<span>DEL</span> <span>Send Link</span>	Lat: 30° 22.8492N Lon: 87° 14.7306W	<span>Drop Mark</span>	1.58 NM	274°	
<span style="background-color: #0070c0; color: white; padding: 2px 5px;">ADD NEW MARK</span>		Times Around (1) <span style="background-color: #0070c0; color: white; padding: 2px 5px;">+</span> : Course Length						13.08 nm	