



Pensacola Yacht Club

Race Course Tools

2024

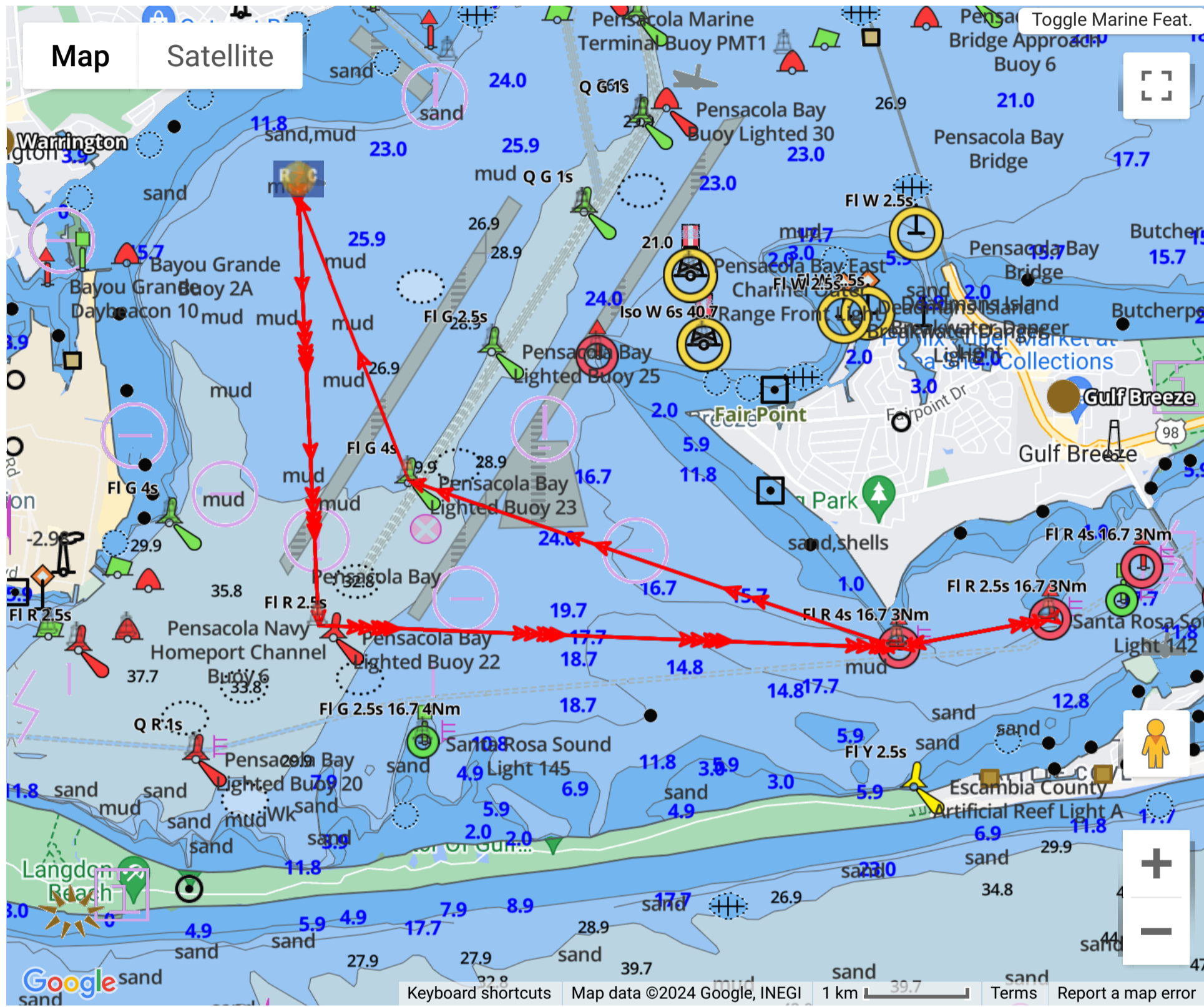
Course: #2 Cruising Start-Kp-Lp-Mp-Ls-Js-Fin 11.41

For HELP on using this tool, click [HERE](#)

Return

HIDE MAP

Map Legend: = Start = Finish = Govt (unused) = Govt (used) = Drop Mark = Gate = Offset = Waypoint



** Drop Marks (not from preset list) may be placed by clicking anywhere on map OR use the "Add New Mark" button below.

Refresh Map Wind Map

Lat/Lon Format REVERSE DELETE RENAME QUICK RENAME Export GPX

(uses mark names)

Export Table		Mark Data					Leg Data		
(re-order)	Mark	ID	Type	Actions	Location	Description	Dist To	(True) Hdg To	
	1		Start	DEL Dup as Finish	Lat: 30° 22.7964N Lon: 87° 14.6628W	Drop Mark	0.00 NM	000°	
	2	K	Mark	DEL	Lat: 30° 20.5122N Lon: 87° 14.532W	Pensacola Bay Lighted Buoy 21 FI G 2.5s	2.29 NM	177°	
	3	L	Mark	DEL	Lat: 30° 20.3976N Lon: 87° 10.947W	Deer Point FI R 4s	3.10 NM	092°	
	4	M	Mark	DEL	Lat: 30° 20.55N Lon: 87° 10.0116W	Between Deer Point & Pensacola Beach Bridge FI R 2.5s	0.82 NM	079°	
	5	L	Mark	DEL	Lat: 30° 20.3976N Lon: 87° 10.947W	Deer Point FI R 4s	0.82 NM	259°	
	6	J	Mark	DEL	Lat: 30° 21.2862N Lon: 87° 13.9746W	Pensacola Bay Lighted Buoy 23 FI G 4s	2.76 NM	288°	
	7		Finish	DEL Send Link	Lat: 30° 22.7964N Lon: 87° 14.6628W	Drop Mark	1.62 NM	338°	
ADD NEW MARK							Times Around (1) : Course Length	11.41 nm	

Return