

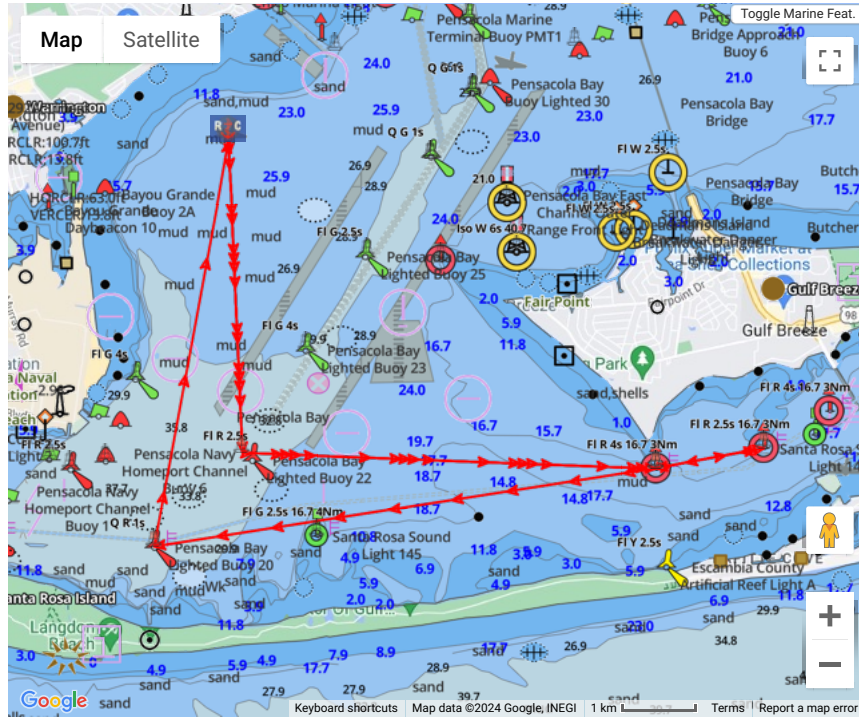


Pensacola Yacht Club Race Course Tools 2024

Course: #5 Multi start-Kp-Ms-Ps-Fin 13.95 SW

For HELP on using this tool, click [HERE](#)

Map Legend:
■ = Start
 ● = Finish
 ⚓ = Govt (unused)
⚓ = Govt (used)
 ▲ = Drop Mark
 ▲▲ = Gate
 ▲▲ = Offset
 ■ = Waypoint



** Drop Marks (not from preset list) may be placed by clicking anywhere on map OR use the "Add New Mark" button below.

(uses mark names)

Export Table		Mark Data					Leg Data	
(re-order)	Mark	ID	Type	Actions	Location	Description	Dist To	(True) Hdg To
<input type="button" value="↕"/>	1		Start	<input type="button" value="DEL"/> <input type="button" value="Dup as Finish"/>	Lat: 30° 22.8438N Lon: 87° 14.655W	<input type="button" value="Drop Mark"/>	0.00 NM	000°
<input type="button" value="↑"/> <input type="button" value="↓"/>	2	K	Mark	<input type="button" value="DEL"/>	Lat: 30° 20.5122N Lon: 87° 14.532W	Pensacola Bay Lighted Buoy 21 FI G 2.5s	2.33 NM	177°
<input type="button" value="↑"/> <input type="button" value="↓"/>	3	L	Mark	<input type="button" value="DEL"/>	Lat: 30° 20.3976N Lon: 87° 10.947W	Deer Point FI R 4s	3.10 NM	092°
<input type="button" value="↑"/> <input type="button" value="↓"/>	4	M	Mark	<input type="button" value="DEL"/>	Lat: 30° 20.55N Lon: 87° 10.0116W	Between Deer Point & Pensacola Beach Bridge FI R 2.5s	0.82 NM	079°
<input type="button" value="↑"/> <input type="button" value="↓"/>	5	L	Mark	<input type="button" value="DEL"/>	Lat: 30° 20.3976N Lon: 87° 10.947W	Deer Point FI R 4s	0.82 NM	259°
<input type="button" value="↑"/> <input type="button" value="↓"/>	6	P	Mark	<input type="button" value="DEL"/>	Lat: 30° 19.8126N Lon: 87° 15.2988W	Pensacola Bay off Santa Rosa Island Q R	3.80 NM	261°
<input type="button" value="↑"/>	7		Finish	<input type="button" value="DEL"/> <input type="button" value="Send Link"/>	Lat: 30° 22.8438N Lon: 87° 14.655W	<input type="button" value="Drop Mark"/>	3.08 NM	010°
<input type="button" value="ADD NEW MARK"/>		Times Around (1) <input type="button" value="+"/> : Course Length					13.95 nm	



Pensacola Yacht Club Race Course Tools 2024

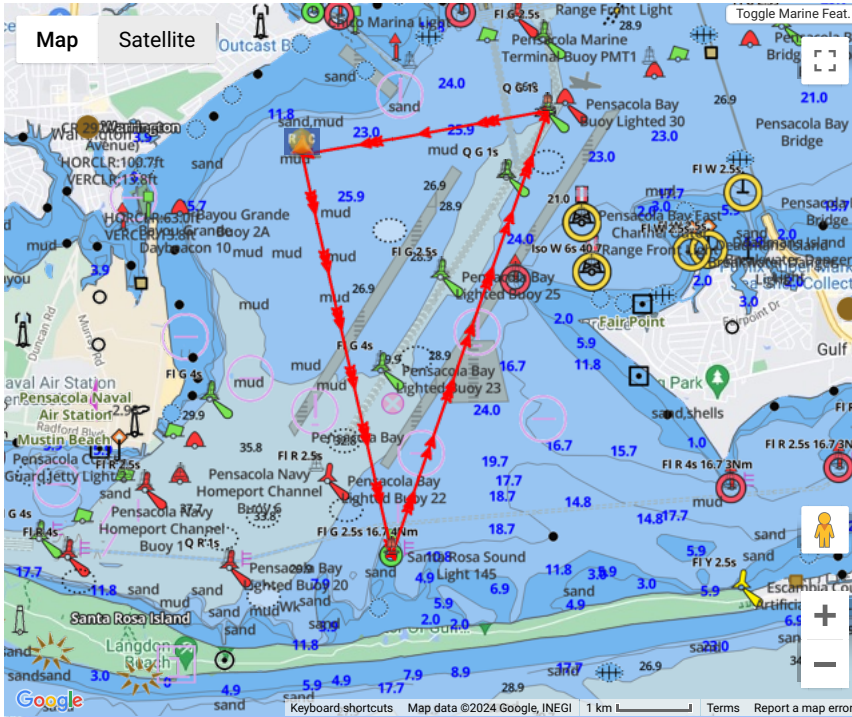
Course: #7 Multi S-Np-Dp-Fin 2 Laps 16.92

For HELP on using this tool, click [HERE](#)

[Return](#)

[HIDE MAP](#)

Map Legend: = Start = Finish = Govt (unused) = Govt (used) = Drop Mark = Gate = Offset = Waypoint



** Drop Marks (not from preset list) may be placed by clicking anywhere on map OR use the "Add New Mark" button below.

[Refresh Map](#)

[Wind Map](#)

[Lat/Lon Format](#)

[REVERSE](#)

[DELETE](#)

[RENAME](#)

[QUICK RENAME](#)

[Export GPX](#)

[Not Using Predicted Course](#)

(uses mark names)

Export Table		Mark Data					Leg Data	
(re-order)	Mark	ID	Type	Actions	Location	Description	Dist To	(True) Hdg To
	1		Start	DEL Dup as Finish	Lat: 30° 22.8846N Lon: 87° 14.6706W	Drop Mark	0.00 NM	000°
	2	N	Mark	DEL	Lat: 30° 19.8936N Lon: 87° 13.8894W	Pensacola Bay off Santa Rosa Island FI G 2.5s	3.07 NM	167°
	3	D	Mark	DEL	Lat: 30° 23.2122N Lon: 87° 12.54W	Bay Channel 29 Q G	3.52 NM	019°
	4		Mark	DEL Send Link	Lat: 30° 22.8846N Lon: 87° 14.6706W	Drop Mark	1.87 NM	259°
	5	N	Mark	DEL	Lat: 30° 19.8936N Lon: 87° 13.8894W	Pensacola Bay off Santa Rosa Island FI G 2.5s	3.07 NM	167°
	6	D	Mark	DEL	Lat: 30° 23.2122N Lon: 87° 12.54W	Bay Channel 29 Q G	3.52 NM	019°
	7		Finish	DEL Send Link	Lat: 30° 22.8846N Lon: 87° 14.6706W	Drop Mark	1.87 NM	259°
ADD NEW MARK							Times Around (1) + : Course Length 16.92 nm	