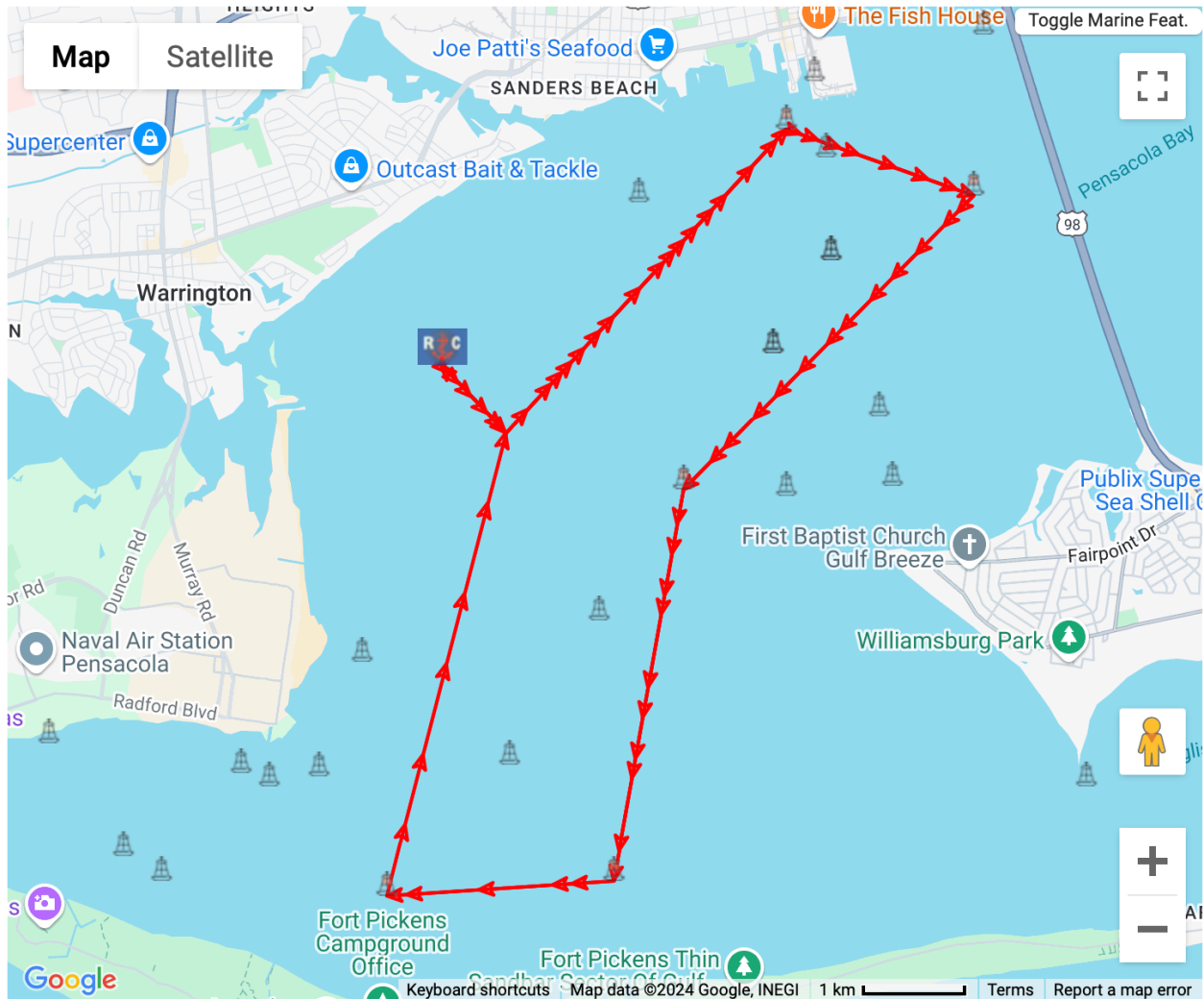


APPENDIX D Pensacola Yacht Club 2024 Santa Claus Regatta Course #4 (~12.5nm)

Start (RC-Yellow Tetrahedron) - Gate (Orange Tetrahedrons) - PMT2s - Cs – Ip – Ns – Ps - Gate (Orange Tetrahedrons) - Finish

The Start and Finish for all courses will be between the Signal Vessel and a yellow tetrahedron. The Signal Vessel will anchor 0.5nm directly downwind from Windward Drop Mark Gate (Orange Tetrahedrons) at approximately 30 22.293N and 87 14.5602W. Listed Latitude and Longitude coordinates for the position of the Signal Vessel and Windward Drop Mark Gate are approximate and the actual GPS position of the Signal Vessel and Windward Drop Mark will be used for ORR-EZ calculations for scoring.



Export Table	Mark Data						Leg Data	
(re-order)	Mark	ID	Type	Actions	Location	Description	Dist To	(True) Hdg To
	1		Start	DEL Dup as Finish	Lat: 30° 22.6536N Lon: 87° 14.9628W	Signal Vessel + Yellow Tet Set 0.5nm from Orange Tet	0.00 NM	000°
	2		Gate	DEL Send Link	Lat: 30° 22.293N Lon: 87° 14.5602W	Orange Tetrahedron	0.50 NM	136°
	3		Mark	DEL	Lat: 30° 23.9202N Lon: 87° 12.8112W	Pensacola Marine Terminal Lighted Buoy PMT2 FI R 4s	2.22 NM	042°
	4	C	Mark	DEL	Lat: 30° 23.5638N Lon: 87° 11.649W	Three Mile Bridge Channel Marker	1.06 NM	109°
	5	I	Mark	DEL	Lat: 30° 21.987N Lon: 87° 13.458W	Pensacola Bay Lighted Buoy 25 FI G 2.5s	2.22 NM	224°
	6	N	Mark	DEL	Lat: 30° 19.8936N Lon: 87° 13.8894W	Pensacola Bay off Santa Rosa Island FI G 2.5s	2.13 NM	190°
	7	P	Mark	DEL	Lat: 30° 19.8126N Lon: 87° 15.2988W	Pensacola Bay off Santa Rosa Island Q R	1.22 NM	266°
	8		Gate	DEL Send Link	Lat: 30° 22.293N Lon: 87° 14.5602W	Orange Tetrahedron	2.56 NM	014°
	9		Finish	DEL Send Link	Lat: 30° 22.6536N Lon: 87° 14.9628W	Signal Vessel + Yellow Tet Set 0.5nm from Orange Tet	0.50 NM	316°
ADD NEW MARK				Times Around (1) : Course Length			12.41 nm	