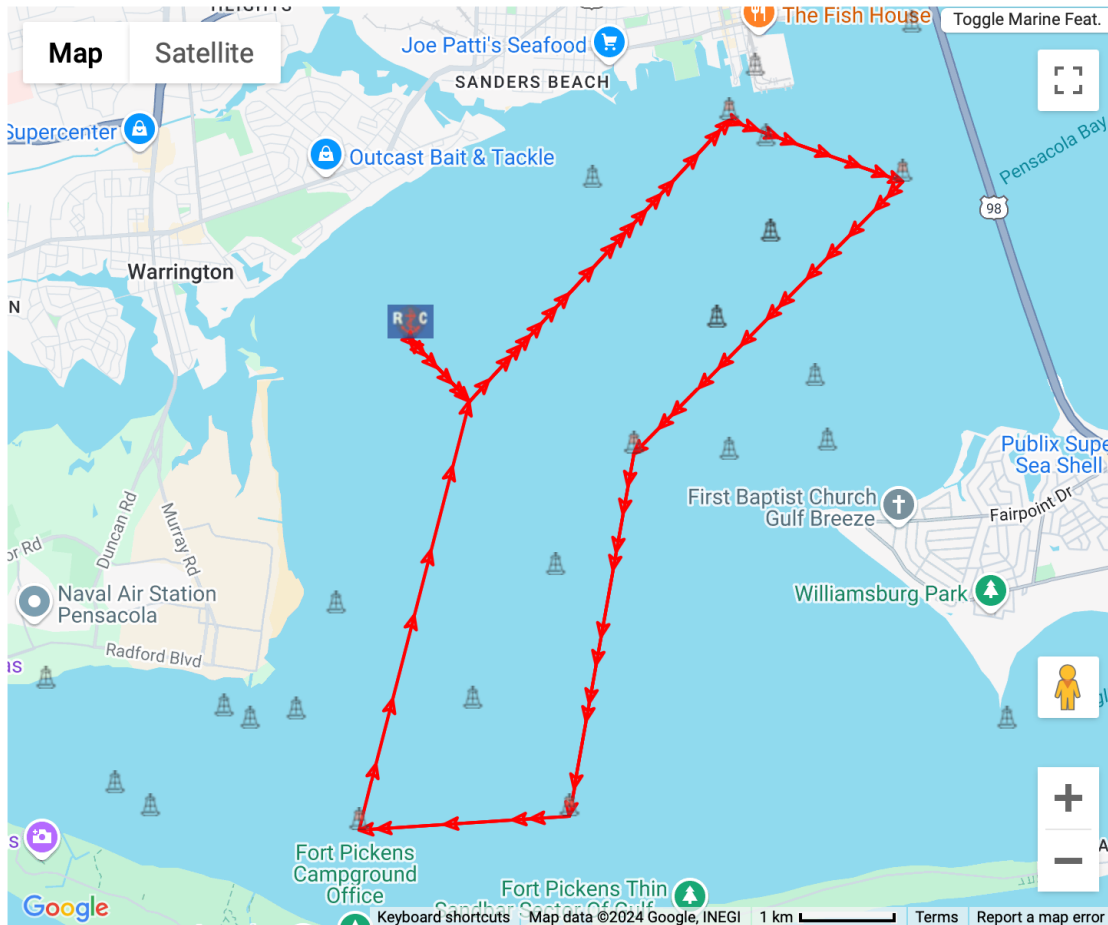


APPENDIX 4 Pensacola Yacht Club 2024 Santa Claus Regatta Course #4 (~12.5nm)

Start (RC-Yellow Tetrahedron) - Gate (Orange Tetrahedrons) - PMT2s - Cs – Ip – Ns – Ps - Gate (Orange Tetrahedrons) - Finish

The Start and Finish for all courses will be between the Signal Vessel and a yellow tetrahedron. The Signal Vessel will anchor 0.5nm directly downwind from Windward Drop Mark Gate (Orange Tetrahedrons) at approximately 30 22.293N and 87 14.5602W. Listed Latitude and Longitude coordinates for the position of the Signal Vessel and Windward Drop Mark Gate are approximate and the actual GPS position of the Signal Vessel and Windward Drop Mark will be used for ORR-EZ calculations for scoring.



PYC Santa Claus Regatta Course #4

Type	Mark	Description	Dist To	Heading
Start	RC-Yellow Tetrahedron	Drop	0.0nm	tbd
Gate	Orange Tetrahedrons	Drop 30 22.293N, 87 14.5602W	0.5nm	tbd
Gov Mark 1	PMT2 - Starboard	Pensacola Marine Terminal PMT 2 FL R 4s	2.2nm	042
Gov Mark 2	"C" - Starboard	3 Mile Bridge Channel Marker "1"	1.06nm	109
Gov Mark 3	"I" - Port	Pensacola Bay Lighted Buoy "25" FL G 2.5s	2.22nm	224
Gov Mark 4	"N" - Starboard	Pensacola Bay off Santa Rosa Island "145" FL G 2.5s	2.13nm	190
Gov Mark 5	"P" - Starboard	Pensacola Bay off Santa Rosa Island "20" FL R 1s	1.22nm	266
Gate	Orange Tetrahedrons	Drop 30 22.293N, 87 14.5602W	2.56nm	014
Finish	RC-Yellow Tetrahedron	Drop	0.5nm	tbd
			12.41nm	