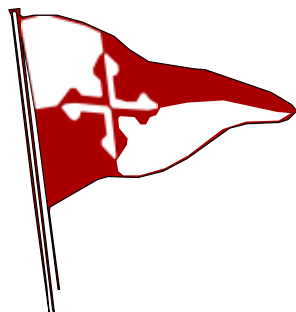


In Support of EWE Spirit Foundation

SCC EWE Spirit Cup Notice of Race SATURDAY, May 21, 2022



Organizing Authority: Sailing Club of the Chesapeake
CBYRA Sanction # 311
scc1944.clubexpress.com

1 Rules

The regatta will be governed by the rules as defined in the current Racing Rules of Sailing. The US Sailing SER "Nearshore Safety Equipment Requirements" apply and confirm or supplement the USCG requirements and the Racing Rules of Sailing except as amended by specific class association rules.

2 Entries

The Annapolis area pursuit race is open to any wind powered vessel, and a River Course will be run for the Harbor 20 fleet. Any one design or handicap class with six or more paid entries by 1700 16 MAY 2022 will be scored separately.



www.sandraklibby.com



Thank you to our sponsors!

J/105 Class Rules are modified by Article IX of the local J-105 Fleet-3 Article/Rules. This event is designated Level 1A. J-105 Fleet-3 Articles/Rules can be found at <https://www.j105fleet3.org/rules>

You may sail with as many or few crew as you feel comfortable.

Entry Due: 1700 Wednesday 18 MAY 2022

Entry Fee: \$25 (\$20 with \$5 CBYRA member discount)

Late Fee: \$20 additional for all entries after 11 MAY 2022

Pursuit Race Online Entry

https://www.regattaman.com/def_event_page.php?race_id=679&yr=2022

River division Online Entry

https://www.regattaman.com/def_event_page.php?race_id=988&yr=2022

All proceeds will benefit the EWE Spirit Foundation <https://www.ewespirit.org/> The EWE Spirit Foundation's mission is to honor the legacy of Geoff Ewenson by helping those facing immediate hardship bridge financial and social support gaps through mentorship, outreach, and direct financial assistance, thus creating a kind world where everyone has the resources, assistance, and opportunity to live with dignity, hope, and joy.

Please consider fundraising as an individual or a team! <https://secure.qgiv.com/event/esca/>

3 Communications

Notices to competitors will be posted on the official event website. Sailing Instructions will be posted by May 7.

The race committee intends to make all announcements to competitors via VHF radio. The specific channel will be stated in the sailing instructions.

All boats shall carry a VHF radio capable of communicating on channels 9, 13, 16, 65, 68, 69, 71, & 72

4 Signals made ashore

Any signals made ashore will be virtual and posted on the official event website.



www.sandraklibby.com



Thank you to our sponsors!

5 Schedule

The Warning signal will be made at 1200 Saturday 21 MAY 2022 at GC"7" off Horn Point. Racing division will be a pursuit style start with the slowest rated boats starting first. The starting sequence will be posted 24 hours prior to the start.

6 Course and marks

All classes except Harbor 20 will sail one race consisting of a triangle with 3 vertices:

- GC "1" off Hackett's Point
- GR C "SR" approximately 700 yards SSE of Thomas Point Lighthouse
- GC "7" approximately 500 yards NE by E of the Horn Point "shoal pole"

Alternate mark for smaller boats and/or lighter winds forecast:

- FL R 2.5s R"2" at the mouth of the Severn River

The attached diagram shows the course marks. The course may be sailed in either direction. All marks shall be rounded to port. The course length and specific marks to be used will be posted 24 hours prior to the start.

The following marks shall always be passed on the channel side **for all keelboat classes**.

- "1AH" at Tolly Point
- FL R 6S 15ft 4M "4" off Greenbury Point

Harbor 20 class will sail two races on the Severn River as described in the Sailing Instructions.

10 Starting and finishing lines

The start/finish line shall lie between GC"7" and an orange flag on the RC boat.

11 Time limit

Any yacht not finishing by 1630 Saturday 21 MAY 2022 will be scored TLE.



www.sandraklibby.com



Thank you to our sponsors!

12 Protests

This is supposed to be fun. Please sail with a sense of sportsmanship! If you break a rule or foul another boat, please take your penalties on the water. Otherwise, if you must, file electronically using <https://cdn.ussailing.org/wp-content/uploads/2018/01/US-Sailing-2017-2020-Protest-Form.pdf>

13 Scoring

Start times will be assigned based on ratings and boats will be scored by class in the order of their finish. Handicapping ratings for the pursuit style race are as follows:

- (a) PHRF classes will be in accordance with PHRF Time over Distance Circular Random ratings.
- (b) ORC Classes, except ORC Cruiser, will be in accordance with ORC General Purpose ratings.

14 Awards

BEER! For all sailors of legal drinking age, to be collected after finishing from a separate RC boat approximately 50 yards NW of the finish line. Enjoy it responsibly! We are working on a social gathering immediately after racing to announce winners and present awards for top fundraisers. No further prizes will be awarded, but swag can be ordered from <https://www.ewespirit.org/ewe-stuff>

15 The lawyers made me

See RRS 4, Decision to Race. The organizing authority will not accept any liability. Competitors participate in the regatta entirely at their own risk.

Contact

Drew Mutch (SCC RC Chair): 410-982-4877

Email: scc1944.rc@gmail.com

In Support of  Spirit Foundation

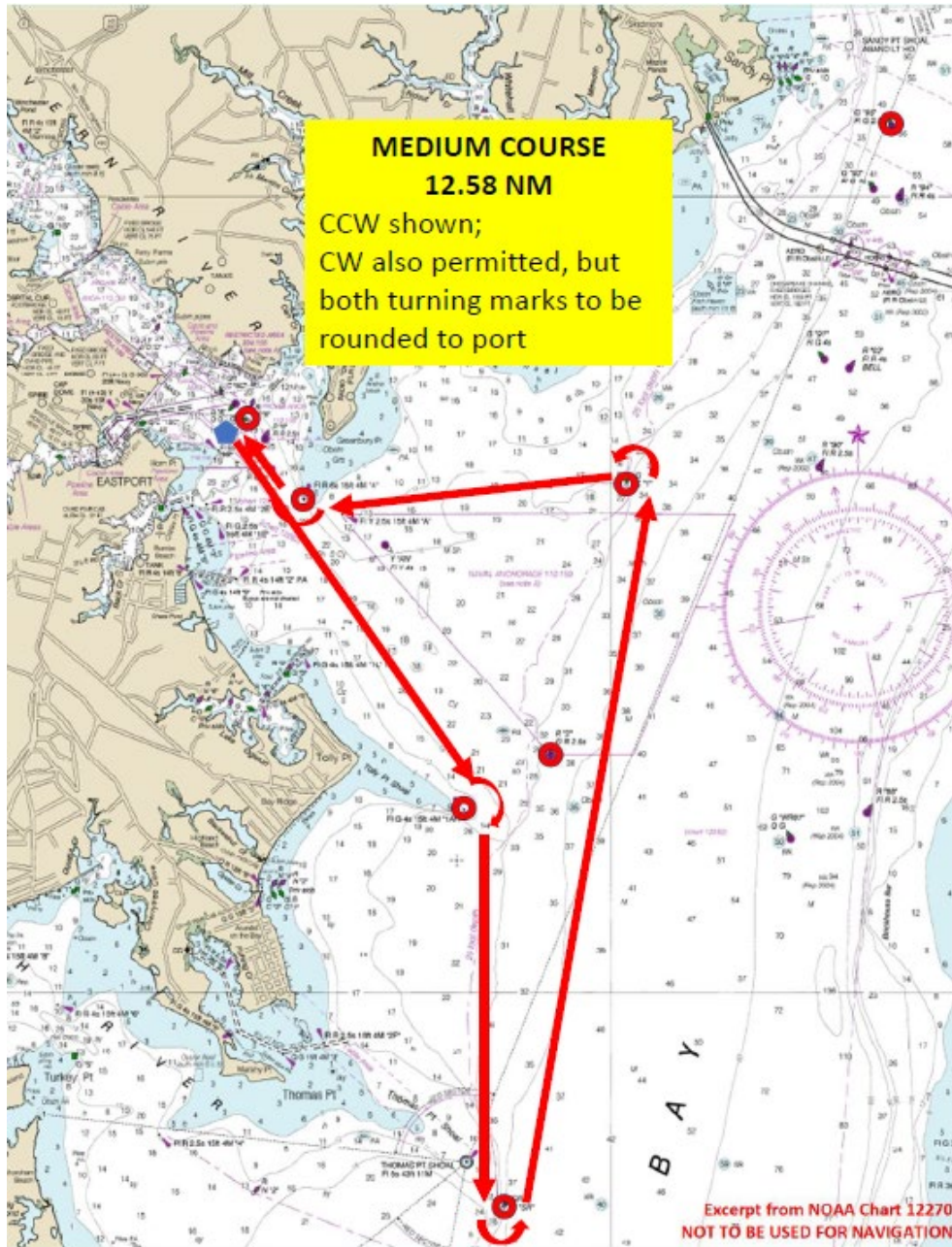


www.sandraklibby.com



Thank you to our sponsors!

Appendix A – course diagram



www.sandraklibby.com



Thank you to our sponsors!