



# Battle of the Bay Youth Regatta

## Sailing Instructions

July 9-10, 2024

Boothbay Harbor Yacht Club

Boothbay Harbor, Maine

### 1. RULES

- 1.1 The regatta will be governed by the rules as defined in The Racing Rules of Sailing 2021-2024 (RRS).
- 1.2 Eligible crews may be entered by completing registration with the organizing authority and paying the entry fee to BHYC before the start of the event.
- 1.3 Competitors must meet the age requirements set forth in the NOR.
- 1.4 USODA age limits apply:
  - Red Fleet: Sailors ages 13-15 (the sailor may not turn 16 in the calendar year)
  - Blue Fleet: Sailors ages 11-12
  - White Fleet: Sailors ages 10 or under
  - Green Fleet: for novice sailors of any age up to 15 (the sailor may not turn 16 in the calendar year). The purpose of Green Fleet is to encourage novice sailors and provide a first racing experience.

### 2. CHANGES TO SAILING INSTRUCTIONS

- 2.1 Sailing instructions will be available by 9:00am on July 9, 2024 at [www.regattaman.com](http://www.regattaman.com). Any change in the sailing instructions will be posted before 9:00 am on the day it will take effect, except that any change to the schedule of races will be posted by 6:00pm on the day before it will take effect.

### 3. COMMUNICATIONS WITH COMPETITORS

- 3.1 Notices to competitors will be posted on the official regatta notice board located at the BHYC Sailing and Education Center.

### 4. CODE OF CONDUCT

- 4.1 Competitors and support persons shall comply with reasonable requests from race officials.

### 5. SIGNALS MADE ASHORE

- 5.1 Signals made ashore will be displayed at the head of the BHYC main float gangway.
- 5.2 When flag "AP" is displayed ashore, "1 minute" is replaced with "not less than 30 minutes." This changes RRS Race Signals.

### 6. SPECIAL SIGNALS

- 6.1 Blue Finish Flag over Race Flag A (White and Blue vertical stripes) displayed with no sound signal while boats are finishing means "no more racing today."

### 7. SCHEDULE OF RACES

- 7.1 Races are scheduled as follows:

## 7.2 Monday July 8th, 2024

- J-22 Match Racing Clinic led by Maine Maritime Academy Head coach Pat Dalilla from 11AM to 4PM.
- 420 clinic by Frank Pizzo and Delaney Brown on starting and boat handling 12:30 to 4:30.
- RS Feva demo sailing will be available in the afternoon by request, first come first served.
- Dead Fish tourney will be held on the water at about 1 PM.
- From 5pm to 7pm we will have a panel presentation and Q and A about high school and college sailing by a panel of coaches.
- Regatta Check-in will be at the Boothbay Harbor Yacht Club Sailing & Education Center from 4- 8 PM.

## 7.3 Tuesday, July 9th, 2024

- 8:00 - 9:00 AM – Morning Check-in and sailors collect lunches. Sailors should begin rigging
- 9:00 – Competitors' Meeting. Outside line launches immediately after meeting. Green Fleet to follow
- 10:30 – Intended first warning signal for Outside Line
- 11:00 – Intended first warning signal for Green Fleet (Inside Line)
- 2:00 – Intended warning for “round the island” course for Outside Line (weather permitting)
- 4:00 – No Green Fleet warning after this time
- 4:30 – No Outside Line warning will be made after this time
- Pizza will be provided after racing

## 7.4 Wednesday, July 10, 2024

- 8:30 – Competitors' Meeting
- 10:00 – Intended first warning signal for Inside and Outside Lines
- 2:00 – No warning will be made after this time - this changes the NOR
- Ice Cream Sandwiches after racing as sailors come ashore.
- Awards will be presented as soon as possible after the completion of racing and the completion protest/redress hearings that might have a bearing on the outcome of the top finishers.

7.5 Should conditions make it impossible to complete the scheduled number of races, the regatta shall be terminated and the results based on the races completed and scored.

## 8. CLASS FLAGS

8.1 The 420 class flag is the class insignia.

8.2 The Opti Championship class flag is the class insignia, the letters "O" over "I".

8.3 The Mixed Fleet flag will be Race Flag Numeral 1.

- The mixed fleet may sail with another fleet at the discretion of the Race Committee. This would be announced at the Competitors meeting and signaled on the water by flying the Numeral 1 during the entire starting sequence.

8.4 The Optimist Green Fleet class flag used for the Warning Signal will be the class insignia white letters "O" over "I" on a light green field.

## **9. RACING AREA**

9.1 The races shall be held in Booth Bay and the surrounding waters.

9.2 The Opti Green fleet will primarily be in the vicinity of the "Coast Guard Buoy" outside Mill Cove off of the Maine State Aquarium Lawn .

9.3 The Opti Championship fleet, 420, and Mixed Fleet will primarily be outside the Tumbler Island buoy (R8).

## **10. CHECK IN AND RETIREMENT**

10.1 Check-in on land: Before launching daily, each sailor and coach shall check at BHYC at the junior pier and confirm their sail number and class.

10.2 Check-in on the water: In addition to the land check in, all competitors' boats shall check in by going past the stern of their Race Committee Signal Vessel and hailing their sail number until acknowledged by the Race Committee.

10.3 Boats retiring shall inform their Race Committee as soon as reasonably possible. Retired boats are expected to stay with their coach in the vicinity of the racing areas.

## **11. COURSES AND MARKS**

11.1 The intended courses for Green Fleet will be windward/leeward and port triangle courses inside the Boothbay Harbor no wake zone.

11.2 The intended courses for the Championship lines will be windward/leeward courses, port triangle courses, a modified Olympic course, and the Harry Anderson course. See Addendum B. Course diagrams will be distributed at check in.

11.3 The "round the island" course for the Opti Championship Fleet is intended to be around Mouse Island or a mark in the vicinity of Mouse Island; the "round the island" course for 420/Mixed Champion Fleet is intended to be around Squirrel Island. Depending on weather, the "round the island" course may not actually go around an island. The "round the island" race will be scored separately. Maps will be distributed at check in.

11.4 No later than the warning signal, the Race Committee signal vessel will display the course designation on a board on the committee boat.

11.5 All courses will be at the discretion of the race committee.

## **12. MARKS**

12.1 Marks will be inflatable balls, cylinders and/or tetrahedrons, except in the case of the "around the island races" in which case government marks may be used.

## **13. THE START**

13.1 The start for the Opti Green Fleet will be a 3-minute starting sequence (RRS Appendix U, Audible-Signal Racing System) with the warning signal made three (3) minutes before the starting signal. This changes RRS 26. The starting line will be between a flag on the race committee boat and an inflatable ball on the port side of the boat.

13.2 Opti Championship, 420, and Mixed fleets will be using a 5-minute starting sequence (Rule 26).

13.3 For the 420 and mixed fleets, the starting line is between a staff displaying an ORANGE flag on the

committee boat and the course side of an orange inflatable ball at the port end.

13.4 For the Opti Championship fleet, the starting line is between a staff displaying an ORANGE flag on the committee boat and the course side of an Yellow inflatable ball at the port end.

13.5 A limiting mark may be streamed from or near the Race Committee Signal Vessel. Boats striking this limiting mark or sailing between the mark and the signal vessel will be considered in violation of RRS 31.

13.6 A boat that does not start within 4 minutes after the starting signal will be scored Did Not Start without a hearing. This changes RRS A5.

13.7 Boats whose warning signal has not been made shall keep clear of the starting area from the time of the course signals for the first start until the warning signal for their class.

## **14. CHANGE OF THE NEXT LEG OF THE COURSE**

14.1 To maintain a course configuration or change course length, a mark may be moved + or - 10 degree to Port or Starboard of the previous mark position, or + or - 0.1 NM in distance from the previous mark position without signaling a course change at the mark beginning that next leg. This changes RRS 33.

14.2 After the start, the Race Committee may shorten the course. If the Race Committee signals a shortened course (displays flag S with two sounds), the finishing line shall be at a rounding mark, between the mark and a staff displaying flag S. The shortened course shall be signaled before the first boat crosses the finishing line.

## **15. THE FINISH**

15.1 Unless the course is shortened, the finishing line shall be between the staff from which a BLUE flag is displayed on a Race Committee boat and the course side of the finish mark, which shall be Green

15.2 If the course is shortened, the finish will be between the staff from which a BLUE Flag is flown and the closest mark of the course that is on the same side of the committee boat as the flag.

15.3 The same Race Committee vessel may or may not start and finish each race.

## **16. PENALTY SYSTEM**

16.1 For the Green Fleet, RRS 44.1 is changed so that the Two-Turns Penalty is replaced by the One-Turn Penalty.

16.2 For the Opti Championship and 420/Mixed Championship fleets, Rules 44.1 and 44.2 exoneration by turns shall apply.

16.3 This event will be using an expedited hearing process for protests and redress hearings. This changes RRS 63.2 and 63.3.

## **17. TIME LIMITS**

17.1 The time limit for each race will be 60 minutes for the first boat to finish. The Race Committee, in its sole discretion, may waive the time limit if it deems the waiver to be appropriate for any reason.

17.2 Boats still racing 25 minutes after the first boat finishes, and not thereafter retiring, being penalized or given redress, will be scored time limit expired (TLE) and will be assigned scored points equal to the number of boats finishing within the time limit plus one point. This changes rules 35 and A5.

17.3 If a boat(s) in or near last place in a race is/are unduly delaying the start of another race, the Race

Committee may Retire those boats and score them in the place they would have finished based on their position at the time. This changes rules 35 and A5.2.

## **18. HEARING REQUESTS**

18.1 A boat intending to protest about an incident that occurs in the racing area shall notify the Race Committee finish boat of her intention, including the sail number of the boat(s) being protested when finishing the race. This changes RRS 61.1(a).

## **19. SCORING**

19.1 The Low-Point Scoring System (RRS Appendix A) will apply, modified so that each boat's series score will be the total of her race scores with her one worst score discarded if 6 or more races have been completed. One race shall be completed to constitute a series.

19.2 Ties will be broken in strict accordance with RRS Appendix A7.

19.3 The "round the island" race will be considered its own event, and not impact the Battle of the Bay scoring. Separate awards will be issued.

## **20. SAFETY REGULATIONS**

20.1 A Coast Guard-approved PFD must be worn and fully secured at all times while afloat, except for brief periods while adding or removing clothing. Whistles permanently attached to the PFDs are recommended. This changes rule 40.

20.2 A boat retiring from a race shall notify a Race Committee boat before leaving the course, or, when that is impossible, on-shore race personnel immediately after arrival ashore.

## **21. EQUIPMENT AND MEASUREMENT CHECKS**

21.1 All competitors must supply their own equipment during the regatta.

21.2 It is the owner's responsibility to ensure that their hull, spars, sails and equipment are maintained in accordance with their Class Rules, including any exceptions made in the NOR.

21.3 All boats must have an attached bow line of class legal length with a bowline on the end. The bow line must also be stowed neatly and free of knots to assist with safety rescues.

21.4 It is the sailor's responsibility to confirm their sail number upon check in.

21.5 Please ensure your sail number is legible. If not, we reserve the right to place that sailor at the end of each cluster of boats as they cross the finish line for each race. It is very difficult to read block numbers, especially if they are overlapped on both sides of the sails.

## **22. SUPPORT TEAMS**

22.1 Team leaders, coaches, and other support persons shall stay outside areas where boats are racing from the time of the preparatory signal until all boats have finished or retired or the Race Committee signals a postponement, general recall, or abandonment. This instruction does not modify RRS 1.1 Helping Those in Danger.

22.2 Support personnel are required to use an Engine Cut Off Switch (ECOS) while the engine is running, in accordance with Federal Law

22.3 Coaches are responsible for the conduct of their spectators.

22.4 All spectators and coaches are expected to monitor the appropriate VHF channel.

- VHF 71 for the Championship Fleet
- VHF channel 72 for the Green Fleet
- VHF channel 9 for Shore support

22.5 All coaches shall fly provided flags.

## **23. TRASH DISPOSAL**

23.1 Competitors are encouraged to use reusable water bottles and recycle appropriately. Single use water bottles will not be provided. Competitors are reminded of rule 47, which states that competitors "shall not intentionally put trash in the water."

23.2 Trash may be placed aboard official or support vessels.

23.3 Boats observed purposefully discharging trash into the water will either be disqualified from all races sailed on the day the infraction is observed, or be subject to other suitable disciplinary action, or both.

## **24. BERTHING**

24.1 Boats shall be kept in their assigned places while in the BHYC facility, including the floats and lawn of the Sailing & Education Center.

## **25. PRIZES**

25.1 Awards will be given to fleets that meet the minimum required fleet size of six boats.

25.2 Green Fleet will not be scored.

25.3 The Battle of the Bay Oar trophy is awarded to either Christmas Cove Yacht Club, Southport Yacht Club, or Boothbay Harbor Yacht Club to be held until the next Battle of the Bay. The winning Yacht Club shall be determined by taking the finishing score of the first five finishing boats from each Club (regardless of the fleet, including any mixed fleet and/or other fleet that meet the 6 boat minimum, excluding green fleet), with the lowest combined score being the winner of the trophy.

## **26. RISK STATEMENT**

26.1 RRS 3 states: 'The responsibility for a boat's decision to participate in a race or to continue to race is hers alone.' By participating in this event each competitor agrees or acknowledges that sailing is a potentially dangerous activity with inherent risks. These risks include strong winds and rough seas, sudden changes in weather, failure of equipment, boat handling errors, poor seamanship by other boats, loss of balance on an unstable platform and fatigue resulting in increased risk of injury. Inherent in the sport of sailing is the risk of permanent, catastrophic injury or death by drowning, trauma, hypothermia, or other causes.

## **27. ADDITIONAL INFORMATION**

27.1 As one of the Clean Regatta policies all sailors, coaches & families are asked to bring reusable water bottles to reduce waste.

27.2 Please observe BHYC's No Vaping or Tobacco products on site policy.

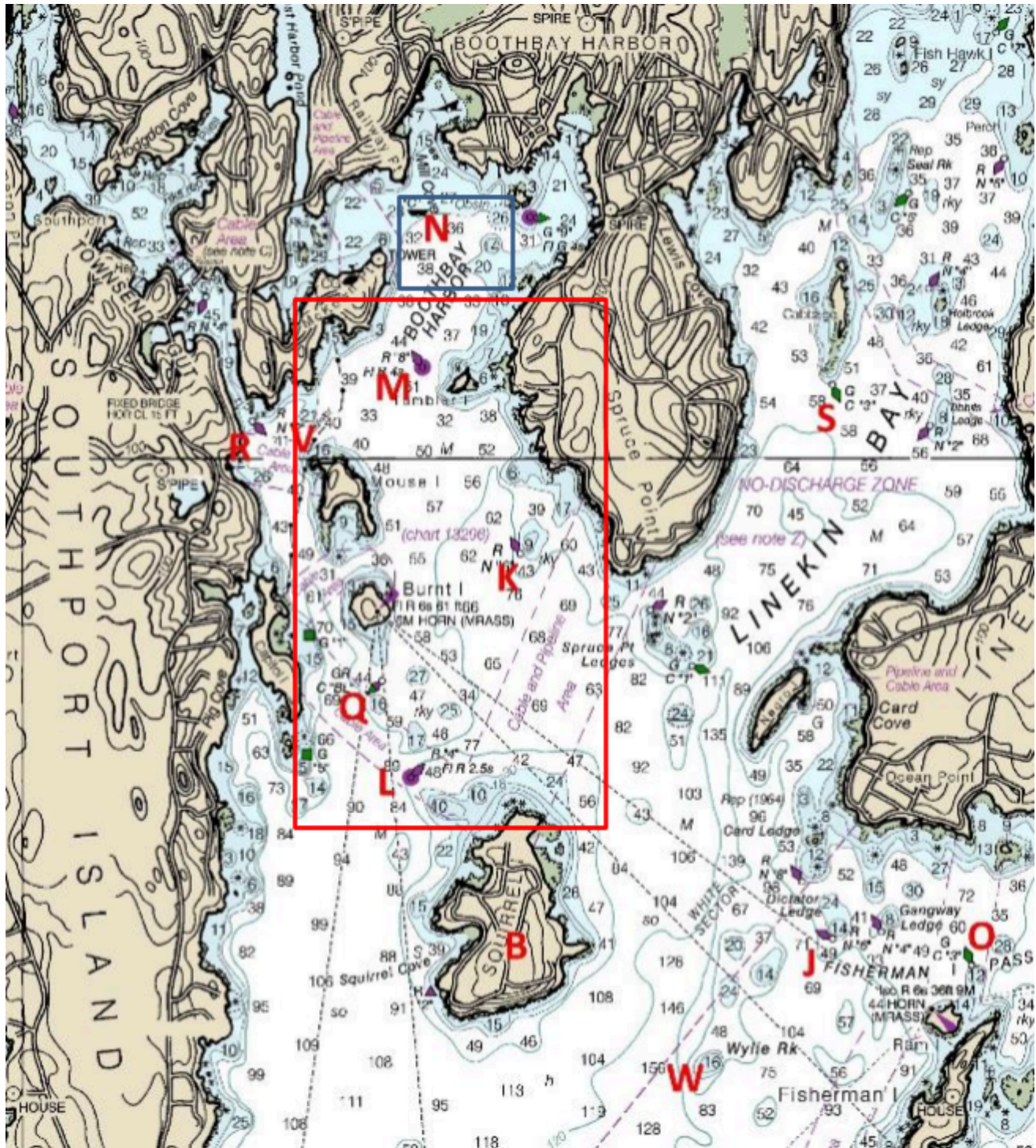
**Addendum A – Approximate Race Areas**

**MAP NOT TO BE USED FOR NAVIGATION**

Opti Greens (Inner Line) – Blue outlined area in the vicinity of “N” – the “Coast Guard Buoy”

Opti Champ, 420 and Mixed Fleet – Red outlined area in the vicinity of “M” / Tumbler Island

*Opti Champ and 420/Mixed champ will share a start / finish line.*



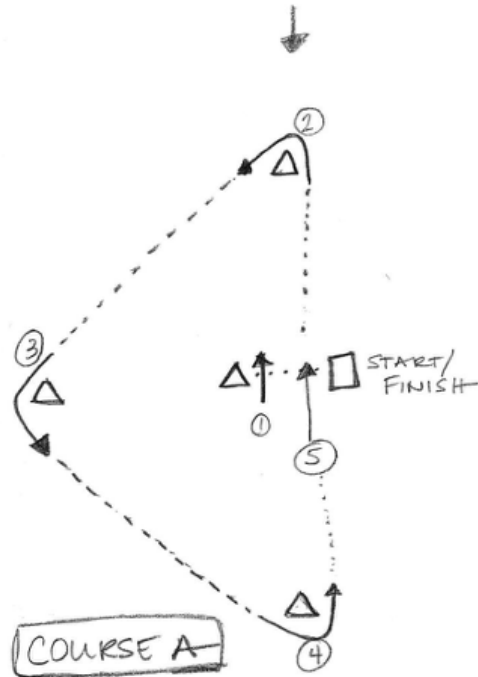
Addendum B – Courses – for illustration only / not to scale

Course W\_

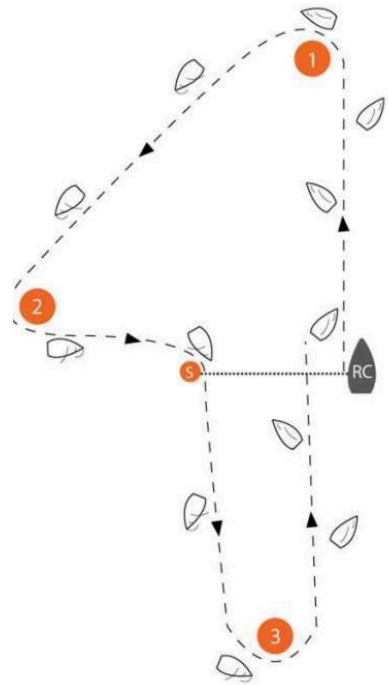
W windward/leeward  
start middle  
W3 = start-1-2-finish  
W5 = start-1-2-1-2-finish  
W7 = start-1-2-1-2-1-2-finish



Course T



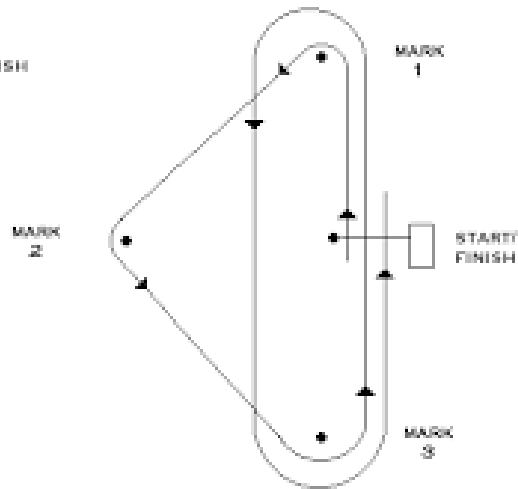
Course H





MODIFIED OLYMPIC

START 1-2-3 1-3-FINISH



Course: O

#### NOTES:

The 420 and mixed fleet will sail a course with the following marks

- Windward - Orange cylinder
- Gybe - Orange cylinder
- Leeward Orange cylinder
- Gate mark and offset - Orange tetrahedron
- Start/finish Pin - Large Fender Balls. The start Pin will be a Ball off the port side of the Race Committee boat (Orange for 420/mixed start, Yellow for Opti Start, Green for Finish - see SI's for further clarification)
- Please note. Marks may be left in the water and not used
  - An offset mark is only used if the next leg will be a run
  - A gate mark is only used to finish a run (the leeward mark is the cylinder)
  - A gybe mark is only used in the triangle and Harry Anderson (Course H) course
  - In the Harry Anderson course (course H) the ORANGE starting pin is Mark the mark left to starboard, regardless of fleet.
  - A mark not used in a course is not a mark of the course

The Opti Champ Fleet will sail the same course and marks, **except**

- The windward mark will be a yellow cylinder set inside of the longer windward leg. All else will be the same
- A shorter Start Pin, a yellow ball, may be set inside the larger start line. On a Harry Anderson course (Course H) the Optis will still round the Orange start pin, not the yellow.

## “Around the Island” Courses

See the map (next page) for approximate locations of government marks.

- K is the Red Nun#6 off of Spruce Point
- Q is the G/R Can off of Burnt Island
- L is the Red Flasher 4 off Squirrel Island

**Long Behind** (intended course for 420s): Start – K – Q – behind Burnt and Mouse Islands – Finish

**Short Behind** (intended course for Optis): Start – Q – behind Burnt and Mouse Islands – Finish

**Big Triangle** (Backup course)- Start – K - L – Finish

**Squirrel Island** (possible 420 course if conditions are ideal). Start, round Squirrel Island (either direction), finish

**MAP NOT TO BE USED FOR NAVIGATION**

