



# MYC Clemson Chase Race

## Sunday, August 25, 2024



### SAILING INSTRUCTIONS

3.0 **Rules:** This event shall be governed by MBSA [www.massbaysailing.org](http://www.massbaysailing.org) General Sailing Instructions except as changed by these Event Sailing Instructions. Due to the nature of this "FUN" event, protests are discouraged.

4.0 **Notice to Competitors:** Final sailing instructions, including, but not limited to scratch sheets, starting times, and course descriptions will be available on [www.regattaman.com](http://www.regattaman.com) by 1200 hours, Saturday August 24, 2024. There will be no skippers meeting and no signals made ashore.

7.1 **Schedule of Races:** One pursuit race is scheduled.

7.2 **Warning Signal:** The first warning signal will be made at 1155 hours (GPS time), the first start at 1200 hours with each boat following at her own designated time.

8.1 **Spinnaker Class** should try to fly Class A flag if possible, from backstay. **Jib & Main Class** should try to fly Class B flag if possible, from backstay.

9.0 **Racing Area:** Start and finish line will be between a race committee boat displaying "RC" flag and Marblehead Channel Bell (15-FT RK Bell) RG "FR".

9.1 **Race Committee boat** named **Kismet IV** a white power vessel.

10.1 **Starting line** is between a yellow flag on port side of Race Committee boat and Marblehead Channel Entrance Bell RG "FR". A boat crossing the starting line early must round the Race Committee boat or Marblehead Channel Entrance Bell. **BOATS SHALL NOT DIP THE STARTING LINE!**

10.2 **The Course:** US Coast Guard Government marks will be used. One of the four courses on page 2-3 will be announced via VHF 72 several times between 1130 and 1200hrs.

13.2 **Start:** Boats **must** start at or after their assigned starting time.

14.2 **Recalls:** Race Committee boat will ATTEMPT to broadcast sail numbers of OCS boats on VHF 72.

15.0 **Finish:** Between the BLUE flag and the Channel Entrance Bell RG "FR".

17.1 **Time Limit:** Four hours after the start of the first boat.

21.2 **Boats shall check in** with the race committee before her first warning signal by sailing past the race committee boat stern and stating her boat name and number of persons aboard.

21.2 **IF YOU WITHDRAW** AFTER STARTING, PLEASE COME TO THE COMMITTEE BOAT TO REPORT YOUR INTENTION TO WITHDRAW OR REPORT TO COMMITTEE BOAT BY RADIO. THE RACE COMMITTEE MONITORS VHF CHANNEL 72.

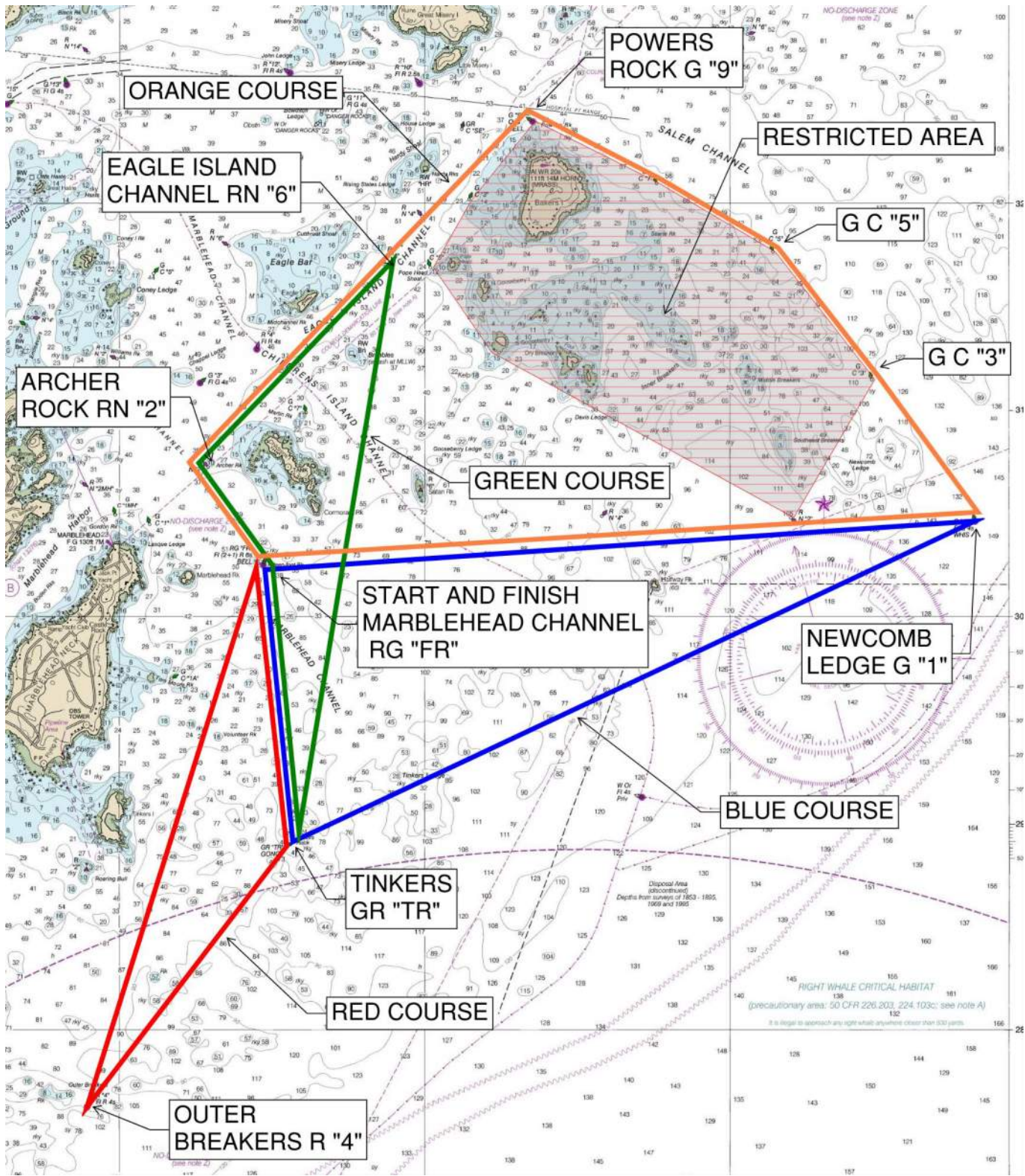


**All captains and crew are invited back to the Marblehead Yacht Club for the event awards and social activities sponsored by Rumson Rum and Rising Tide immediately following the race.**

**Out of town boats should contact MYC Dockmaster on VHF 71 to request a temporary mooring for the party. Rafting may be required.**



[www.rumsons.com](http://www.rumsons.com)



CLEMSON CHASE RACE			
ALL COURSES COUNTER CLOCKWISE LEAVING MARKS TO PORT			
RED 5.7 nm	BLUE 8.5 nm	GREEN 6.0 nm	ORANGE 9.3 nm
START BETWEEN MARBLEHEAD CHANNEL RG "FR" TO PORT AND RACE COMITEE BOAT TO STARBOARD			
OUTER BREAKERS R "4"	TINKERS GR "TR"	TINKERS GR "TR"	NEWCOMB LEDGE G "1"
TINKERS GR "TR"	NEWCOMB LEDGE G "1"	EAGLE CHANNEL RN "6"	GC "3"
		ARCHER ROCK RN "2"	GC "5"
			POWERS RK G "9"
			ARCHER ROCK RN "2"
FINISH BETWEEN MARBLEHEAD CHANNEL RG "FR" TO PORT AND RACE COMITEE BOAT TO STARBOARD			

NOTE: RESTRICTED AREAS: Boats shall not traverse the area bounded by a line connecting the following in the sequence listed: Bell G"9" (Pwers Rock), Salem Channel Cans: "7" & "3", Nun "2" (near Newcombs Ledge), South Gooseberry Island, Can "5" (Pope Head), Bell G "9" (Powers Rock). Yachts entering this area must leave between the same two boundary markers that they passed when entering. If any of the marks listed in this paragraph are used as marks of the course, passing them on the required side is allowed.