



## Marblehead to Portland Harbor July 26-27, 2024

1. **Event:** The Marblehead Yacht Club invites sailors to participate in the Downeast Challenge, a sailboat race of 77.8 nautical miles from Marblehead, MA to Portland Harbor, Maine.
2. **Handicap System:** ORR-EZ Time on Time will be used. Boats without a current ORR-EZ certificate will be issued a non-contestable rating by the race committee.
3. **Rules:** This event will be governed by the Mass Bay Sailing Association General Sailing Instructions except as changed by these sailing instructions.
  - (a) Shorthanded boats (Single/Doublehanded) may use self-steering devices. This modifies RRS 52.
  - (b) Boats shall adhere to the US Sailing Safety Equipment Requirements (USSER) for Coastal Races as defined in USSER #1.0.2. The safety of a boat and her crew is the sole and inescapable responsibility of the "person in charge", as per RRS 46, who shall ensure that the boat is seaworthy and manned by an experienced crew with sufficient ability and experience to face bad weather. S/he shall be satisfied as to the soundness of hull, spars, rigging, sails and all gear. S/he shall ensure that all safety equipment is at all times properly maintained and safely installed or stowed as appropriate, and that the crew knows where it is kept and how it is to be used.
4. **Notices to Competitors:** Sailing Instructions and notices will be posted at [www.regattaman.com](http://www.regattaman.com) for this event. MYC Race committee will monitor VHF channel 69 at the start. Changes to the Sailing Instructions will be posted on [www.regattaman.com](http://www.regattaman.com)
5. **Skippers Meeting:** Skippers meeting, sponsored by **Rumson's Rum**, will be held on Thursday July 25 at 1900 hours at the Marblehead YC, 4 Cliff, St. Marblehead, MA to discuss the course, sailing instructions, finishing protocol, docking information and awards. Skippers and crew are welcome to participate in rum tasting sponsored by **Rumson's Rum** and dine at the MYC galley. Scratch sheets, finishing sheets and changes to the SI's will be available at that time and posted on Regattaman.com's event page.
6. **The Start:** Start line shall be between G"3" and yellow Q flag aboard the dark green power boat named 'Eider'. The first warning signal will be Friday July 26 at 1200 in the vicinity of **G"3" FI G 4s** which is NW of Children's Island.
  - 6.1 **Checking In:** Each boat shall check in with the race committee before her first warning signal by sailing past the race committee boat stern and stating her boat name and number of people aboard. Checking in via VHF is not allowed.
  - 6.2 **Starting Sequence:** Start sequence will be rolling as shown below, all in GPS time. The MYC Race Committee will sound one signal at each of the times show below and attempt to hail start sequence via VHF 69. This modifies RRS 26. RC will attempt to notify OCS (over early) boats via VHF 69. OCS boats that do not restart will be assessed a 10 minute penalty.

**1200 Warning for Shorthanded Class**

**1205 Start for Shorthanded Class**

**1205 Warning for Cruising class**

**1210 Start for Cruising class**

**1210 Warning for Racing Class**

**1215 Start for Racing Class**

**6.3 Radio Monitoring:** After each yacht starts, they are required to monitor Ch 16 at all times during the race.

**7. Course:** Marks of the course will be US Coast Guard Navigational Buoys

- (a) The start line will be between the MYC Race Committee boat flag & **G"3" FIG 4s** which is NW of Childrens Is, Marblehead.
- (b) Thatcher's Island to be left to port.
- (c) Dry Salvages (NE of Thatchers Is.) Lighted Bouy G"1" FI G 2.5S to be left to port.
- (d) Portland Lighted RW "P" Mo (A) Whistle must be left to port.
- (e) Finish buoy G "3" FL G 4s (East of Portland Head Light) to be left to starboard.

**7.1 Restricted Areas:** Boats shall not traverse the area bounded by a line connecting the following in the sequence listed: Bell G"9" (Powers Rock), Salem Channel Cans: "7" & "3", Nun "2" (near Newcombs Ledge), South Gooseberry Island, Can "5" (Pope Head), Bell G "9" (Powers Rock). Yachts entering this area must leave between the same two boundary markers that they passed when entering.

**7.2 Course Distance:** The course distance is 77.8 NM

**7.3 Short Course:** length N 61.5 NM

**Competitors shall mark their time using GPS time as they cross the following line of latitude. Race Committee may at their discretion score at this point.**

**Monitor VHF Channel 16 on the hour should the RC announce shortened course.**

Short course #1 **43deg 20'**

**8. The Finish:** The finish line is the line extending East from Portland Head Light to G "3" FL G 4s. G "3" to be left to starboard. Note this is the point where the Portland Head Light sector goes from Green to White.

**8.1 Finishing Times:** Skippers shall take their own finish time (GPS time) and immediately contact race organizers via email or text message, contact information below. Additionally, skippers shall complete the finishing certificate available at [www.regattaman.com](http://www.regattaman.com) with their finish time via email or text.

Email [marcel@vdainc.com](mailto:marcel@vdainc.com)

Text **617-594-2542**

**Finish Message:** 'Yacht Name' HH:MM:SS

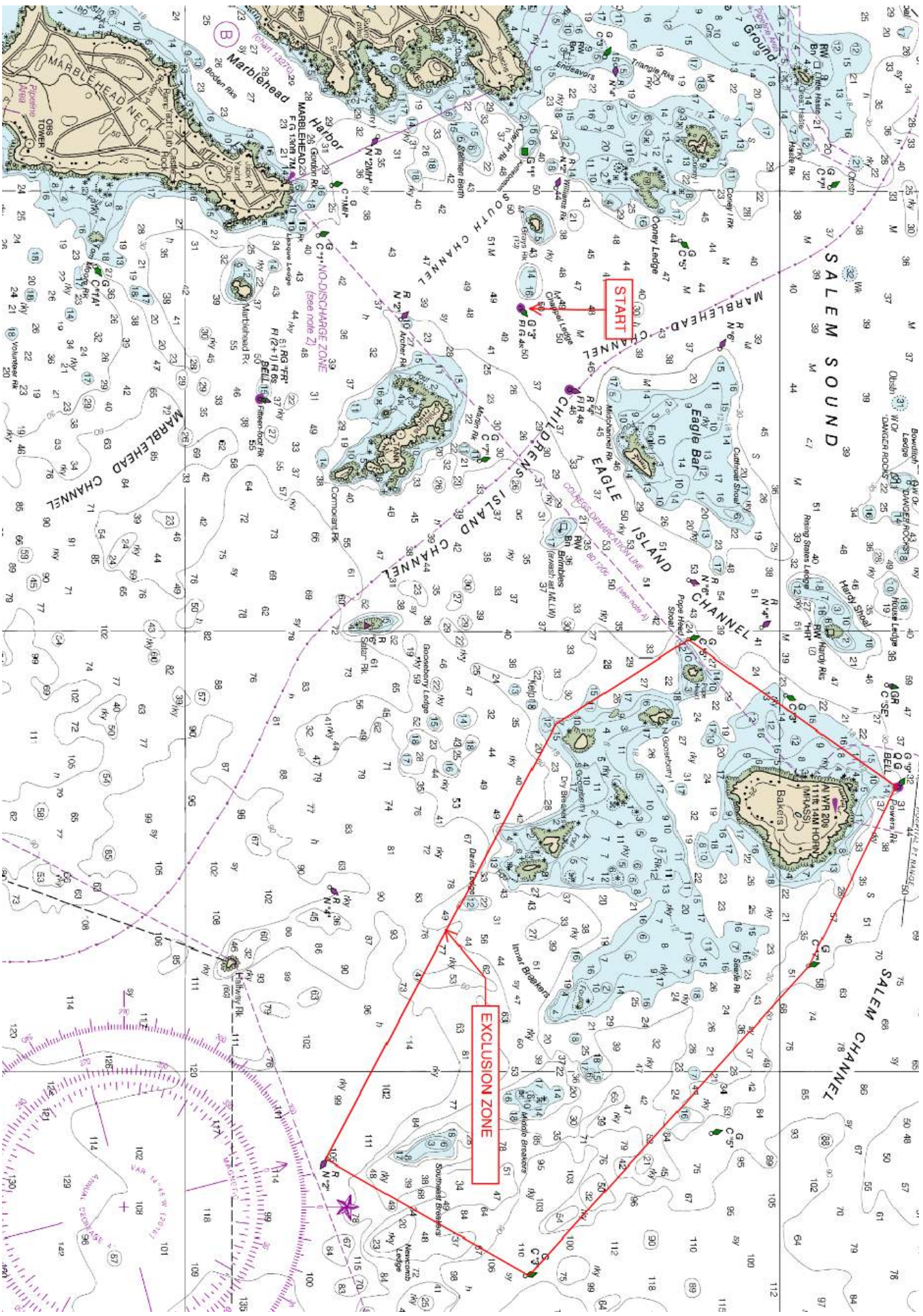
**Withdraw Message:** 'Yacht Name' withdraws HH:MM:SS

***Please Note:** Do not use the Text Number to call unless an emergency. If you do not notify your finish or withdrawal by Saturday July 27 1600, race organizers will try to locate you, and if unsuccessful, will notify the Coast Guard.*

**9. Time Limit:** Shall be 1600 hrs Saturday July 27. Yachts that have not finished at this time shall record their 1600 lat/long position to be reported on their finishing time certification.

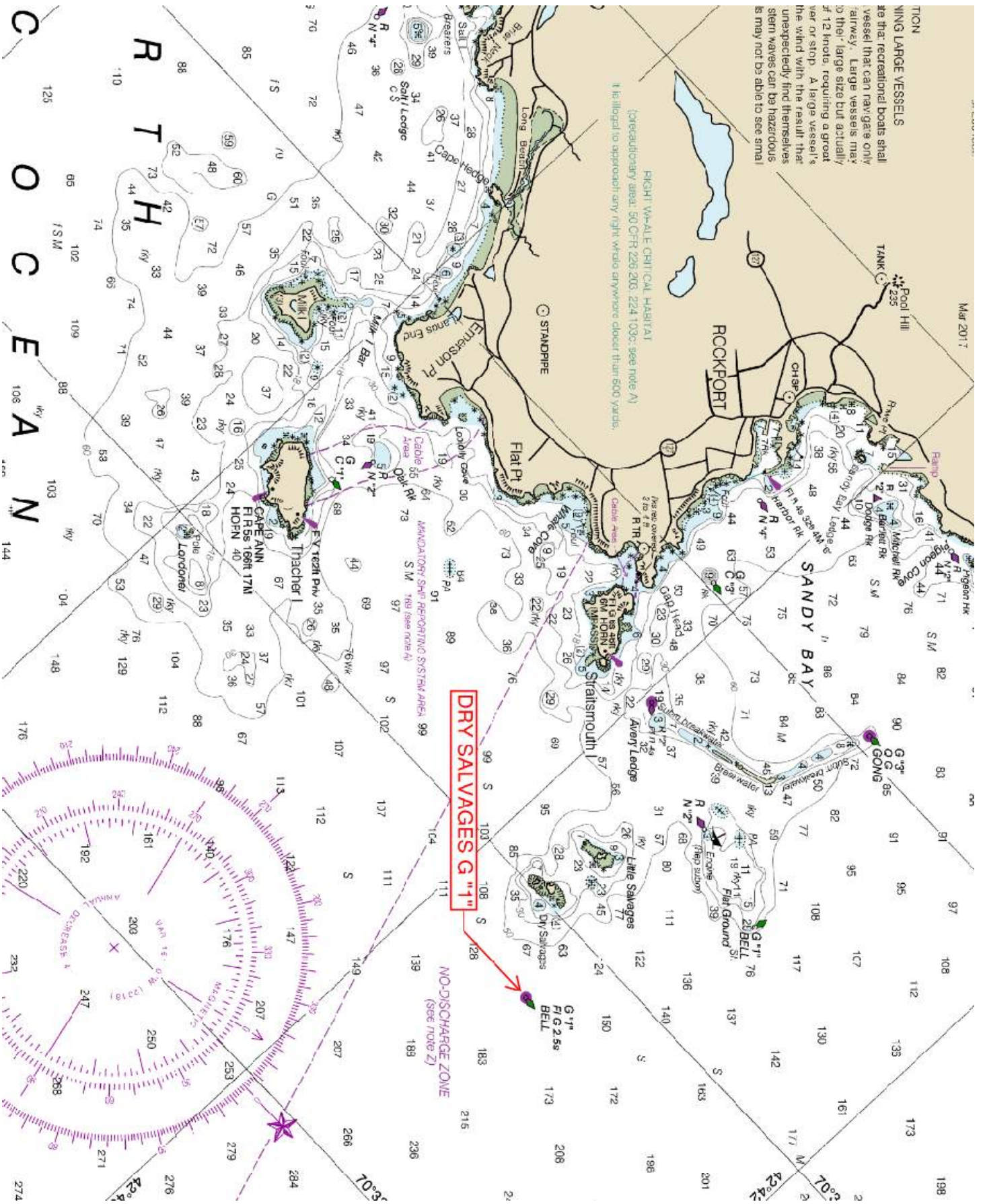
**10. Protests:** Must be delivered to Fore Points Marina front desk within 1 hour of boat's finish.

**11. Prizes:** All skippers and crew are invited to the Awards Party starting at 1700 on Saturday July 27 at Fore Points Marina. Awards Party is sponsored by Rising Tide Brewery and includes a complimentary BBQ for the participants. Prizes will be awarded for 1st, 2nd, and 3rd in each class. There will be special prizes awarded for noteworthy events, so share your stories.



NING LARGE VESSELS  
re that recreational boats shall  
vessel that can navigate only  
fairway. Large vessels may  
to their large size but actually  
of 12 knots, requiring a great  
ver or stop. A large vessel's  
the wind with the result that  
unexpectedly find themselves  
stem waves can be hazardous  
is may not be able to see small

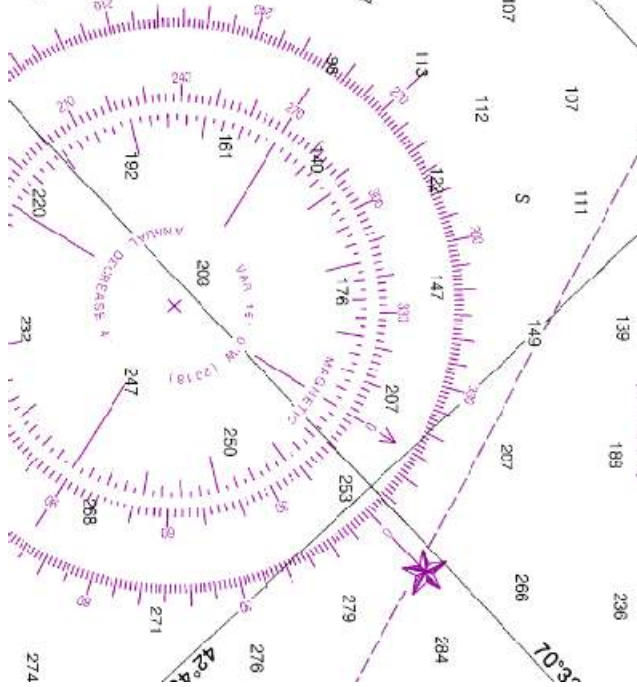
RIGHT-WHALE CRITICAL HABITAT  
(precautionary area; 50 CFR 226.203; 224 103c; see note A)  
It is illegal to approach any right whale anywhere closer than 500 yards.



C  
R  
T  
H  
O  
C  
E  
A  
N

**DRY SALVAGES G "1"**

NO-DISCHARGE ZONE  
(see note Z)



Model and accompanying secular rate is of same declination as variation variation is increasing. If annual direction to variation it is subtractive increasing.

**NOTE A**

Charts are published in Chapter 2, U.S. Coast and Geodetic Survey (USCGS) Mariners. Information concerning charts is obtained at the Office of the Command District in Boston, MA or at the District Engineer, Corps of Engineers in Boston, MA.

Regulation section numbers.

**NOTE C**

**PRECAUTIONARY AREAS**

Precautionary Areas may consist of vessels operating in or about Boston Harbor and one of the established areas is advised to exercise extreme care in navigating.

**NOTE E**

Vessels should exercise caution while in a 6.7-mile radius of Isles Light, Massachusetts, and in the area.

**NOTE J**

Deepwater Ports (DWP) include boundaries including an Area of Influence (AOI) and Regulated Navigation Areas (RNA). Refer to chart 13207.

Disposal Areas (DA) are prohibited within the Sanctuary.

Disposal Areas (DA) are prohibited within the Sanctuary.

Disposal Areas (DA) are prohibited within the Sanctuary.

Disposal Areas (DA) are prohibited within the Sanctuary.

Disposal Areas (DA) are prohibited within the Sanctuary.

Disposal Areas (DA) are prohibited within the Sanctuary.

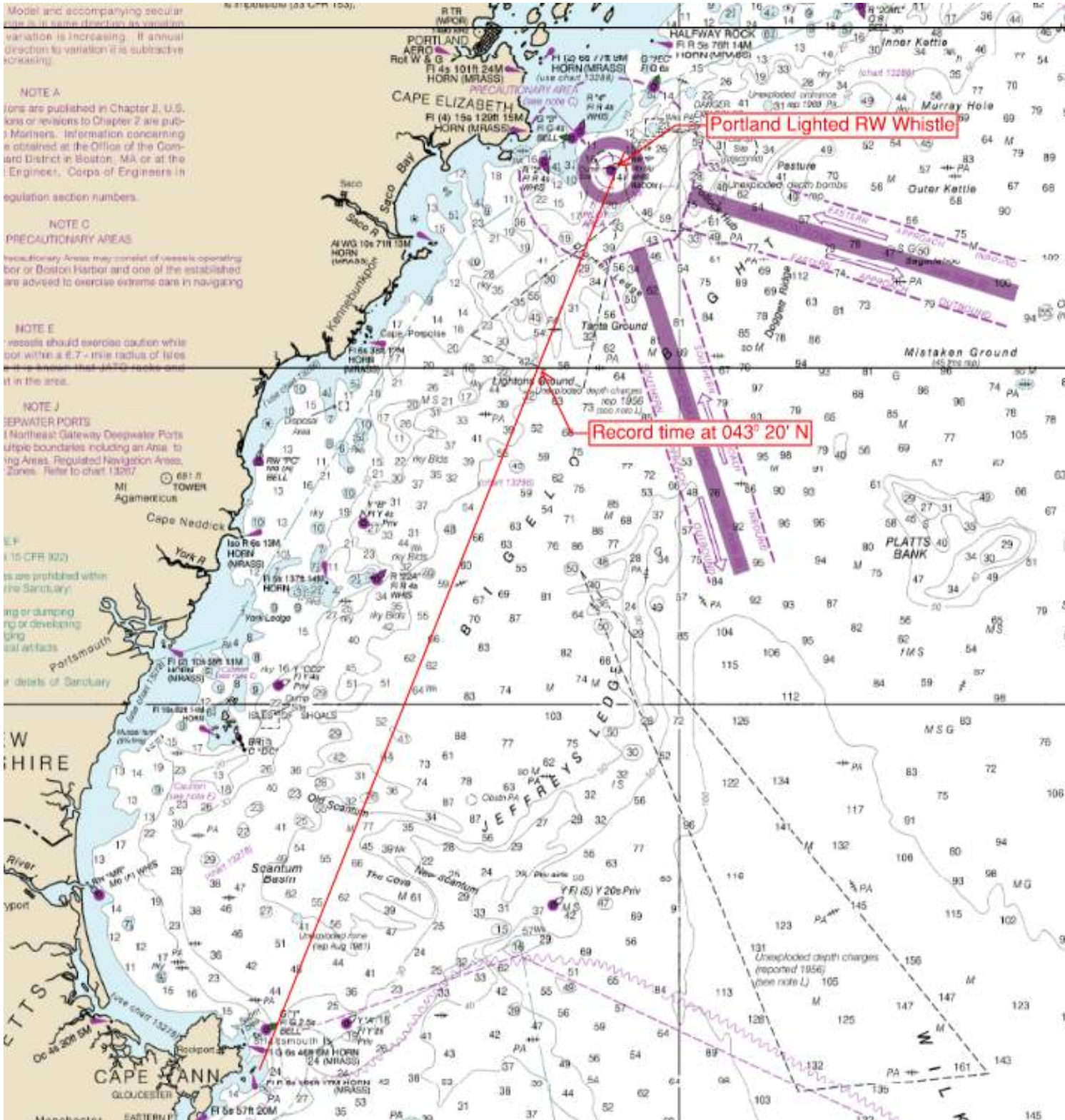
Disposal Areas (DA) are prohibited within the Sanctuary.

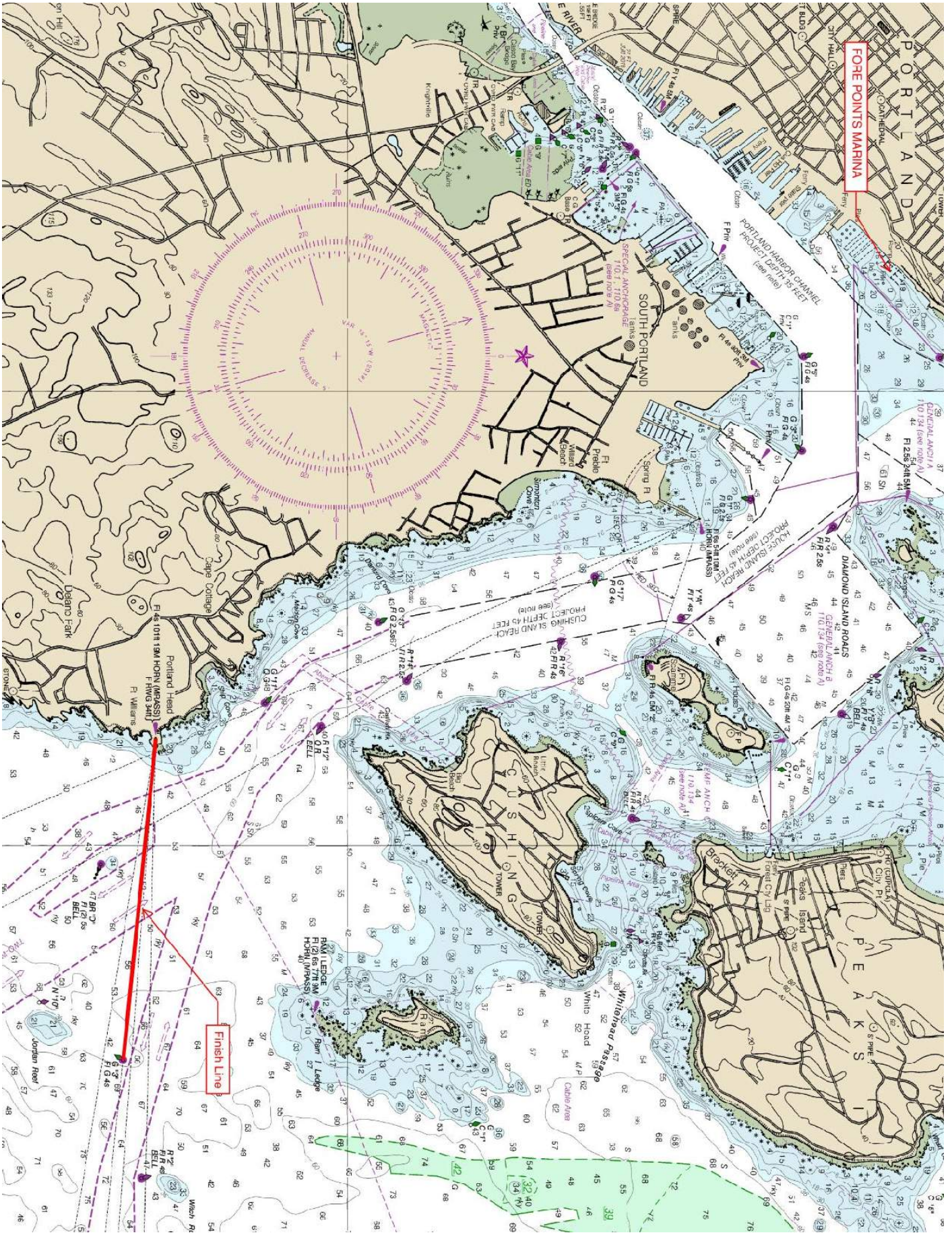
Disposal Areas (DA) are prohibited within the Sanctuary.

Disposal Areas (DA) are prohibited within the Sanctuary.

Disposal Areas (DA) are prohibited within the Sanctuary.

Disposal Areas (DA) are prohibited within the Sanctuary.





FOLE POINTS MARINA

PORTLAND

SOUTH PORTLAND

DIAMOND ISLAND ROADS

CUSHING ISLAND

PEACH ISLAND

Finish Line

Whithead Passage

Brooklyn Pt

Portland Head

Jordan Head

Which Pt

Whithead Pt