



2024

Lipton Cup Regatta
July 20 & 21
Squantum Yacht Club, Quincy, MA

Radio	Ch
Alpha	69
Bravo	70
RC	72

SAILING INSTRUCTIONS

1. Rules

The regatta will be governed by the Racing Rules of Sailing (RRS), the rules of each participating Class, (except as any of these are altered by these sailing instructions) and by these sailing instructions.

2. Entries

Eligible yachts may be entered by completing registration with the organizing authority, paying the required fees, and signing the required waivers.

3. Notices to Competitors

Notices to competitors will be posted on the official Race Committee notice board located on the door titled 'Sail Locker' by the street side stairs.

4. Changes in Sailing Instructions

Any change in the sailing instructions and/or schedule of races will be posted on the official Race Committee notice board before 9:00 AM on the day it will take effect.

5. Schedule of Races: Alpha, Bravo Courses

Day: Sat. and Sun. Time of Warning Signal Saturday: **10:00 AM**. Sunday: **10:30 AM**

5.1 Alpha Course

Schedule of Races - **A: Optimist** Blue (13-15), Red (11-12), White (-> 10);
B: Optimist Green, novice;

Races scheduled as follows: The number of races is at the discretion of the Race Committee.

5.2 Schedule of races Bravo

Bravo - A: C-420 Championship, B: C-420 Green

Races are scheduled as follows: Sat 3+ Races. Sun. 1+ Races. No races will be started after 3:30 PM Sun. The number of races is at the discretion of the Race Committee.

5.3 Skippers Meeting 9:00AM Don McGilvray Hall all classes.

6. Racing Area

6.1 The racing area will be in Quincy Bay as shown in illustration "Racing Area", .

6.2 While racing, yachts shall not complete passage between Hangman Island and its green navigational daymarker "3", located approximately 400 feet southwest of Hangman Island. This day marker, not a mark of the course, is deemed an obstruction.

7. Safety.

7.1 Life jackets shall be worn by all competitors while sailing except briefly while changing or adjusting clothing or personal equipment). Failure to comply will result in that boat being scored DNC without hearing, for each race there was a violation.

7.2 If retiring from racing you must notify the RC as soon as possible.

8. The Course: See Paragraph 30

9. Marks

9.1 Alpha Course

Marks will be 2.5 foot tall solid green or orange pyramids.

9.2 Bravo Course will utilize:

Marks will be yellow or orange pyramids.

9.3 New Marks - When used in accordance with instruction 13, Change of Course after the Start, will be original marks. The starting and finishing marks will be buoys with a staff displaying an orange flag marked with a black "X".

10. The Start

10.1 Alpha Course

Races will be started in accordance with RRS Appendix T. There will be no visual signals. Classes starting at 3 minute intervals in the order of Optimist Blue, Red, White; N10 Blue, Red; Optimist Green; N10 White. The starting sequence will be as follows:

SIGNAL	SOUND	TIME BEFORE START
Warning	3 long	3 minutes
Preparatory	2 long	2 minutes
	1 long, 3 Short	1 minute, 30 seconds
	1 long	1 minute
	3 short	30 seconds
	2 short	20 seconds
	1 short	10 seconds
	1 short each	5, 4, 3, 2, 1, seconds
Start	1 long	0

There will be approximately 1 minute between classes.

10.2 Bravo, Course

Starts will be per RRS 26.1.

10.3 Depending on the number of entrants, the Laser and C420's may be divided by fleets at the discretion of the race committee.

10.4 The starting line will be between a staff displaying a white flag or shape on the race committee boat at the starboard end and starting mark at the port end. The windward mark shall be in place prior to the starting signal.

10.5 Yachts whose preparatory signal has not been made shall keep clear of the starting area, all yachts whose starting signal has been made, and all yachts racing.

11.0 Recalls

11.1 Individual recalls will be signaled in accordance with RRS rule 29.2, except that code flag "X" will not be flown on Alpha course only.

11.2 (a) The failure to hail, the order of hail, the hail of some but not all, the failure of a boat to hear such a hail or the untimely hail of OCS boats will not be grounds for redress. This changes RRS 62.1 (a)

11.2 When a general recall has been signaled, any fleet subject to the recall shall return to the starting area and restart. The "First Substitute" will not be flown on Alpha Course only.

12.0 Mark Boats

Mark boats may be stationed beyond each mark.

Failure of a mark boat to be on station or to display her signal will not be grounds for redress.

13.0 Change of Course after the Start

13.1 When changing the course after the start, the race committee will re-lay an original mark as practicable. Any mark to be rounded, after rounding the newly laid mark, may be relocated to maintain the original course configuration.

13.2 A change of course will be signaled near the mark beginning the leg being changed by a race committee boat that will display code flag "C" and the approximate compass bearing to the new mark and sound a horn repeatedly. The change will be signaled before the leading yacht has begun the leg, although the newly laid mark may not yet be in position.

14.0 The Start/Finish

The Starting Line will be between a white flag on the committee boat and a port end

starting mark. The finishing line will be between a white flag on a race committee or finishing line boat and the port end finishing mark.

14.2 If a separate Finish line is not on station, the Starting line will also be the Finish Line.

14.3 The Start/Finish line shall be closed.

15. Time Limit

Bravo: The time limit will be 2.5 Hours for each class. Yachts finishing more than 30 minutes after the first yacht of her class finishes or after the time limit, whichever is later, will be scored "Did not finish". Alpha Line: As considered appropriate, the Race Committee shall have discretion to finish yachts in place having difficulty completing the course.

16.0 Propulsion, RRS 42

In accordance with RRS 60; the Race Committee, a boat, or a Protest Committee May protest a boat for violations of RRS 42 (propulsion).

17.0 Protests

17.1 Protests shall be in writing. Forms for protests are available at the Protest Administration desk. All protests must be lodged there within one hour after the respective race committee boat docks at the SYC Clubhouse. Dock times for each line will be posted at the official Race Committee notice board.

17.2 The Jury may hear protests in approximately the order of receipt as soon as possible.

17.3 Protest notices will be posted within 30 minutes of the protest time limit to inform competitors where and when there is a hearing in which they are parties to a protest or named as witnesses.

18.0 Scoring

18.1 Alpha, Bravo

The Low-Point Scoring System, RRS AA2 of the racing rules, will apply, except that 5 races are scheduled of which 1 race constitutes a series. Each yacht's total score will be the sum of her scores for all races. There will be no throw outs. This changes RRS A2.1)

18.2 Alpha Course - N10 Blue, White, Red, and Optimist Red, Blue, White, Green will be scored as separate fleets.

19.0. Scoring, Points: 1st = 1, then place

F: Did not finish	Number of Registrants plus "1"
P: OCS	Number of Registrants plus "1"
Q: Disqualified	Number of Registrants plus "1"
R: Retired	Number of Registrants plus "1"
S: Did not start	Number of Registrants plus "1"
W: Withdrew	Number of Registrants plus "1"

20.0 Support Boats

20.1 Team leaders, coaches and other support personnel shall not enter the racing course between 11:00 AM and 5:00 PM inclusive except either to provide emergency assistance, or at the direction of the Race Committee. (We request that support boats monitor VHF channels of respective lines.) The penalty for failing to comply with this requirement may be the disqualification of all yachts associated with the infringing support personnel.

21.0 Electronic Communication

A yacht shall neither make electronic transmissions while racing nor receive such communications not available to all yachts.

22.0 Crew Changes

22.1 Crew Changes shall be permitted after the last race on Saturday and before the first race on Sunday without the permission of either the Jury, Race Committee Chairman or Event Chairman. All other crew changes must have permission from either the Jury, Race Committee Chairman or Event Chairman. Permission may not be granted to accommodate increasing or decreasing wind strength.

22.0 Checking in

22.1 Alpha Line: Participants are required to sail by the Race Committee Boat on Starboard to check in at the beginning of each day.

22.2 Bravo and Charlie: Participants are required to sail by the Race Committee Boat on Starboard to check in at the beginning of each day.

23.0 Prizes

Prizes will be awarded to yachts placing first, second and third in the regatta.

24.0 Fleet Designations

24.1 Colored Ribbons shall be displayed from the outhaul/clew area of:

Participant:

Opti Red	Red
Opti Blue	Blue
Opti White	White
Opti Green	Green
C-420 Championship	Blue
C-420 Green	Green

25.0 PARENTS/SPECTATORS

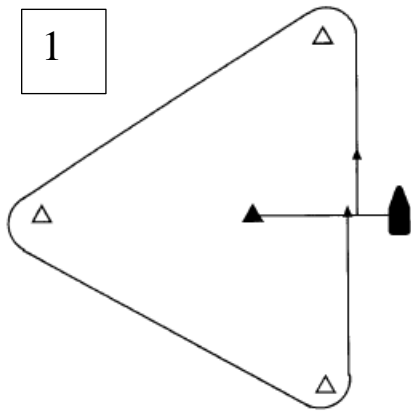
25.1 Competitors are responsible for the behavior of their parents/spectators. Undue interference, failure to follow Race Officials instructions, or these Sailing Instructions of any sort may be cause for disqualification.

26.0 Disclaimer of Liability

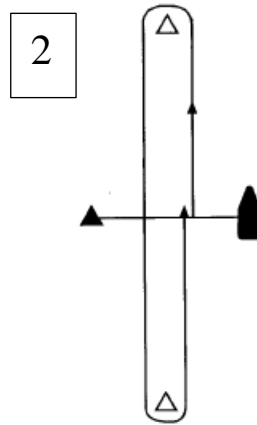
26.1 Competitors participate in the regatta entirely at their own risk. See RRS 4, Decision to Race. The organizing authority will not accept any liability for material damage or personal injury or death sustained in conjunction with or prior to, during, or after the regatta.

30.0 The Courses:

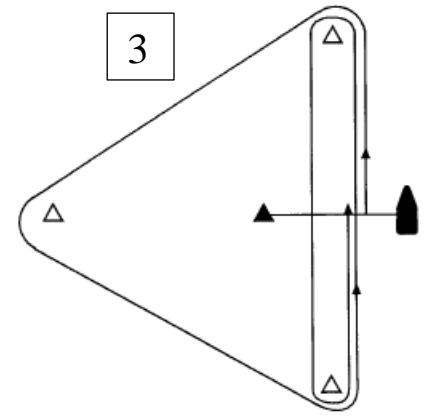
30.1



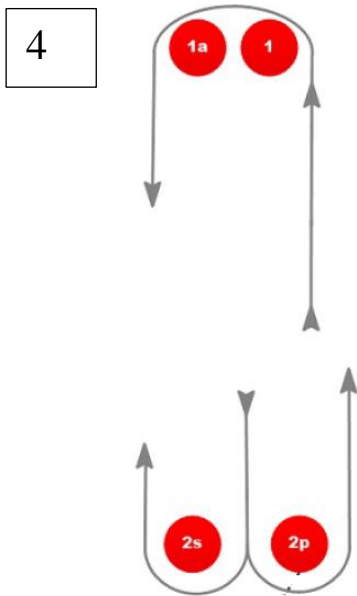
Triangle



Windward/Leeward



Olympic



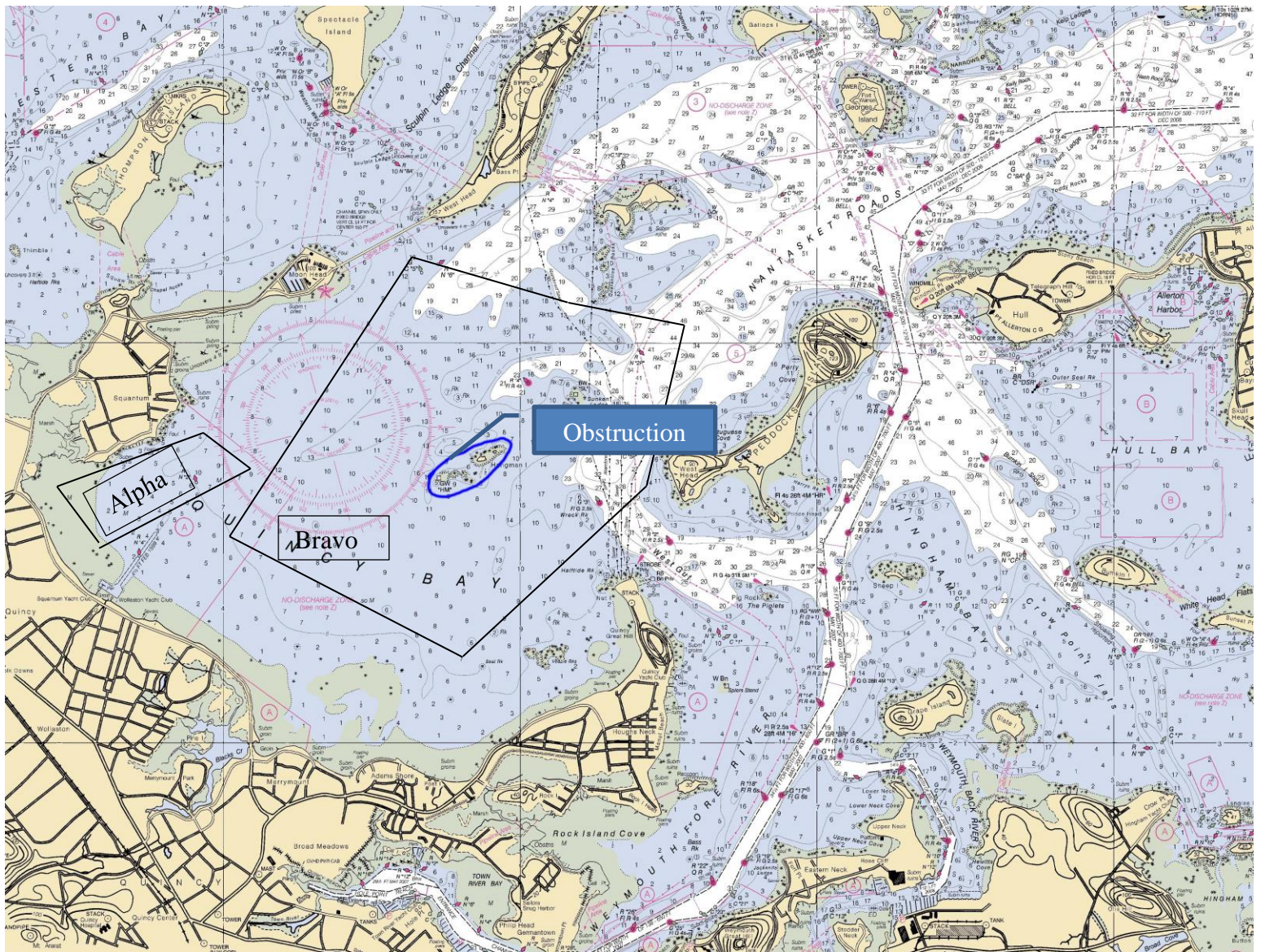
Windward/Leeward
Offset & Gates

30.2 The race courses may be sailed once, twice or three times around by a number next to the course number displayed on Race Committee boat.

Thanks
SPECIAL THANKS TO THE ALPHA, BRAVO, COURSE RACE COMMITTEES AND REGATTA STAFF FOR HELPING US MAKE IT HAPPEN AGAIN.

REGATTA CHAIRMAN: Bob Thomas (781)608-5583
ALPHA RACE COMMITTEE CHAIRMAN: Jill Norris
BRAVO RACE COMMITTEE CHAIRMAN: Chris Harrington
SYC

Marine Radio Ch: 72
Marine Radio Ch: 69
Marine Radio Ch: 70
Tel: 617-770-4811



Obstruction

Alpha

Bravo

Charlie