



MAINE STATE C420 CHAMPIONSHIP

July 30-31, 2024

Kollegewidwok Yacht Club

&

Kollegewidwok Sailing Education Association

KYC Lane, Blue Hill, ME 04614



SAILING INSTRUCTIONS

Organizing Authority (OA):

KOLLEGEWIDGWOK YACHT CLUB and KOLLEGEWIDGWOK SAILING EDUCATION ASSOCIATION

The notation '[DP]' in a rule in these Sailing Instructions means that the penalty for a breach of that rule may, at the discretion of the protest committee, be less than disqualification.

1. RULES

- 1.1. The Maine State C420 Championship will be governed by the rules as defined in the Racing Rules of Sailing, and the C420 class rules.
- 1.2. Any changes to the Sailing Instructions shall be posted on the Event Notice Board before 2000 of the day before the next day's First Race Warning Signal.

2. NOTICES

Notices to competitors will be posted on the Event Notice Board located in the KYC Clubhouse at 44 KYC Lane, Blue Hill.

3. SIGNALS MADE ASHORE

- 3.1. Signals made ashore will be displayed on the flagpole of the Kollegewidwok Yacht Club located at 44 KYC Lane, Blue Hill.
- 3.2. Flag AP displayed with two sound signals made ashore, means the Racing is postponed. The initial Warning Signal will be made no less than 45 minutes after AP is lowered. This changes Race Signal AP.
- 3.3. Flag D lowered with one sound signal will mean that competitors are allowed to leave the launch area and sail out to the racecourse.

4. SCHEDULE of RACES

Monday, July 29

1530- 1800	Coach boat launching and 420 drop-off at staging area.
1530-1800	Complete registration check- in for coaches and sailors at the KYC.

Tuesday, July 30

0630	Boat drop-off and rigging.
0800	Breakfast items available. Registration & check-in. Powerboat Launching Ramp closes. (due to ongoing sailing classes unrelated to the regatta)
0930-1045	Sailors collect lunches.
1015	Competitors Meeting.
1030	Coaches & Judges meeting.
1100	Harbor Start.
1200	First Warning Signal.

Dinner on July 30th served to competitors as they come off the water.

Wednesday, July 31

0800	Powerboat Launching Ramp Closes.
0830	Breakfast items available.
0830-1015	Sailors collect lunches.
1000	Competitors 'Meeting.
1030	Harbor Start.
1130	First Warning Signal.
1530	No Warning Signal after this time.

Awards Presentation and Race Tea as soon after racing as possible.

5. SIGNAL FLAGS AFLOAT

- 5.1. The Warning Signal will be the 420 Class flag
- 5.2. AP Flag over A Flag- No more racing today.
- 5.3. When the Race Committee displays Flag V with one sound signal all official, coach and support vessels shall, if possible, monitor the Race

Committee communication on VHF Channel 72, for instructions about any safety issues.

6. RACING AREA The racing area will be in Blue Hill Bay, see Attachment A for chart.

7. COURSES

7.1. Courses will be described in Attachment B, Course Diagram.

7.2. The course for each race will be displayed on a white board on the starboard side of the signal boat

7.3. The Race Committee may make a change of position to the windward mark of plus (+) or minus (-) 10 degrees without signaling. This changes RRS 33.

8. MARKS

Mark 1 will be a large inflatable mark, mark 1a will be a small inflatable mark, the pin at the port end of the start line will be a large inflatable mark, or pin boat, marks 2s and 2p will be large inflatable marks.

9. THE START

9.1. Races will be started using RRS 26.

9.2. The starting line will be between a staff displaying an orange flag on the port side of the Signal boat at the starboard end of the start line and a large inflatable mark at the port end of the start line. Depending on the number of entries, the Race Committee may use a pin boat instead of an inflatable mark which will have an orange flag to indicate the pin end of the start line.

9.3. The Race Committee will attempt to hail the sail numbers of OCS boats after the Starting Signal. The failure of any boat to hear the hail, promptness of the hail, failure to hail any boats, or the order of boats hailed shall not be grounds for redress. This changes RRS 62.1

10. THE FINISH

The finish line will be the same as the Start line, boats shall finish from the direction of the last mark between a Blue Flag displayed on a staff on the port side of the Signal boat and the course side of a large inflatable mark at the port end of the Finish line.

Depending on the number of entries, the Race Committee may use a pin boat instead of an inflatable mark which would have a blue flag to indicate the pin end of the finish line.

11. TIME LIMIT and FINISHING TIME WINDOW

- 11.1. The time limit for each race for the first boat to sail the course and finish is 60 minutes.
- 11.2. The time limit for all boats to finish after the first boat finishing is 20 minutes. Any boats not finishing within that 20 minutes will be scored TLE (Time Limit Expired) without a hearing. This changes RRS 35, 63.1, A4 and A5.

12. PENALTY SYSTEM

- 12.1. APPENDIX V1 will apply. The first two sentences of rule 44.1 are changed to: 'A boat may take a One-Turn Penalty when she may have broken one or more rules of Part 2 or rule 31 in an incident while racing. However, when she may have broken one or more rules of Part 2 while in the zone around a mark other than a starting mark, her penalty shall be a Two-turns penalty''.
- 12.2. APPENDIX V2 will apply. V2 (b) is changed
from 30% to 20% Scoring Penalty.

13. PROTEST AND REQUESTS FOR REDRESS HEARINGS

- 13.1. Hearing forms for protests and requests for redress will be available at Event Notice Board.
- 13.2. The Protest Filing Time period will end 30 minutes after the Race Committee (Signal Boat) has docked.
- 13.3. Notices will be posted no later than 30 minutes after the protest filing period has ended to inform competitors of the hearings in which they are parties or named as witnesses.
Hearings will be held at Kollegewidgwock Yacht Club,
44 KYC Lane, beginning at the time posted on the
Notice Board.
- 13.4. A list of boats that have been scored OCS, ZFP, UFD, BFD, or TLE will be posted before the Protest Filing Time has expired. Those boats have 30 minutes after the Protest Filing Time period to file a Request for Redress. This changes RRS 62.2

14. SCORING SYSTEM

- 14.1. A maximum of 12 races are scheduled, of which 1 race scored will constitute a series.

14.2. When 5 or fewer races have been completed a boat's series score will be the total of her race scores with no race excluded.

14.3. When 6 or more races have been completed, a boat's series score will be the total of her race scores excluding her worst score.

15. SAFETY REGULATIONS

15.1. [DP] Competitor boats that intend to race shall check in with the Signal Boat before the First Warning Signal of each day of racing.

15.2. [DP] A boat that retires from a race shall notify the Race Committee as soon as practicable either afloat or by notifying Race Committee personnel ashore.

15.3. [DP] Check out before launching from the KSEA dock or boat ramp each day. Check-in after returning to the KSEA dock or boat ramp each day.

15.4. [DP] All boats must have an attached bow line of class legal length (40'). The bow line must be attached and stowed neatly and free of knots to assist with safety rescues.

16. SUPPORT BOATS

16.1. Coach and support boats will be required to display a numbered flag supplied by the OA and or race committee for which a \$20.00 refundable deposit will be made at time of registration as a coach or support boat.

16.2. [DP] From the time of the Warning Signal until all boats have finished a race all coach and support boats shall not approach any competitors on the Championship course within 150'.

16.3. [DP] Trash disposal is the responsibility of coach and support boats. RRS 47 applies.

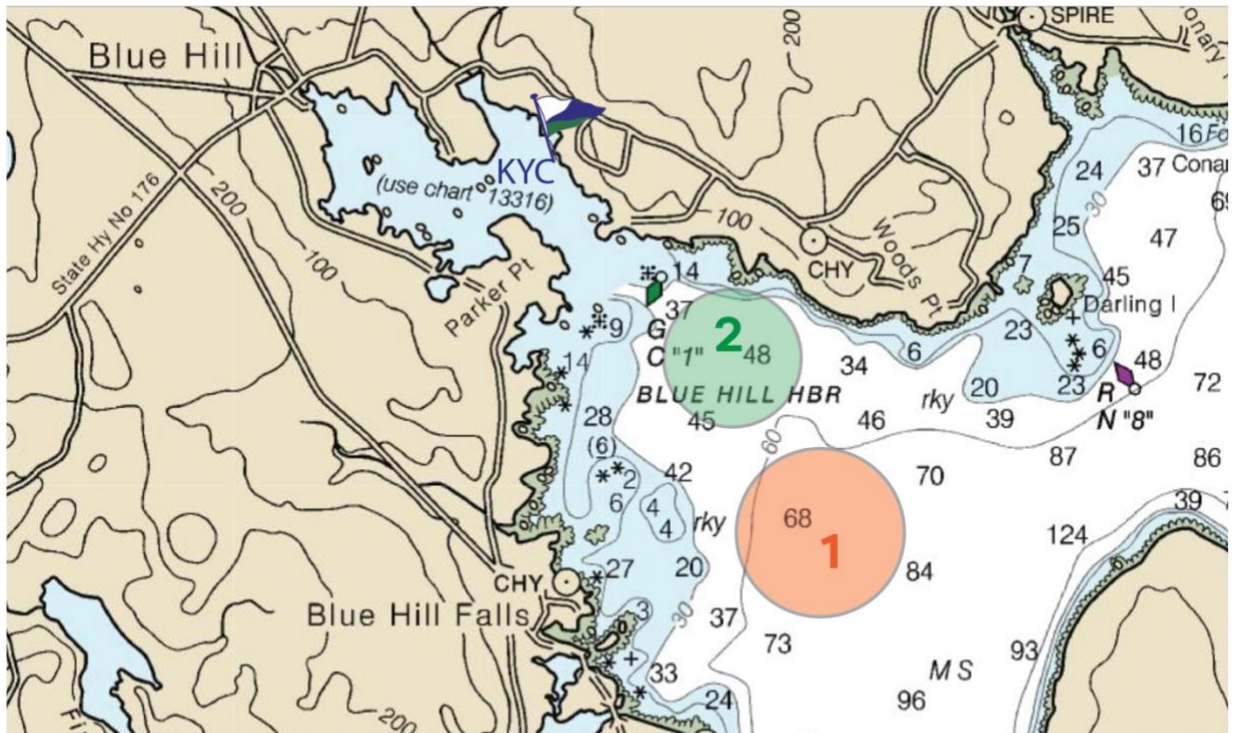
16.4. [DP] All support persons (coaches and parents) will have installed and use ECOS (kill switches) and link (tether cord) at all times when on the water in any boat under 26 ft. unless the boat has an enclosed primary helm.

16.5. [DP] All coach and support boats must carry a VHF radio that is equipped with working VHF transmitter/receiver. On the water, the Championship Course Race Committee intends to monitor and communicate with coach and support boats on VHF radio channel 72. Green Fleet will monitor and communicate via channel 68.

17. PRIZES

Trophies will be awarded for First through Third positions, with the Maine State C420 Perpetual Championship Trophy awarded to the top team affiliated with a Maine – based sailing program. Other prizes may be awarded at the discretion of the OA.

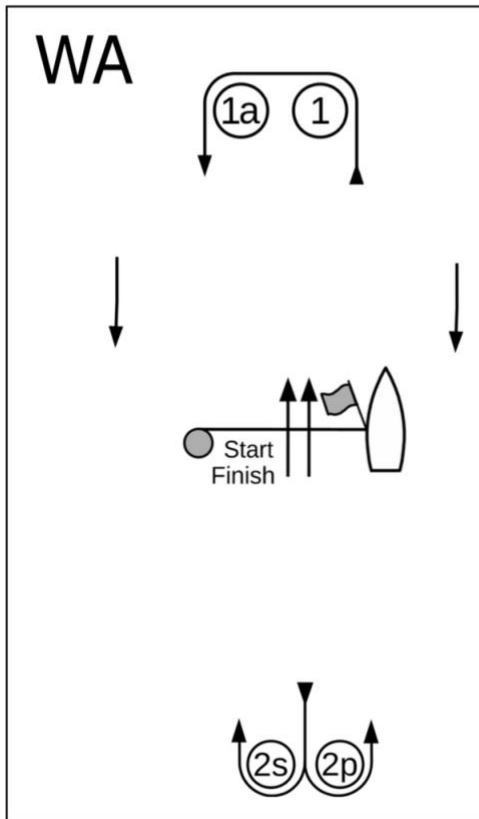
Attachment A – Racing Area



1 denotes Championship Fleet course area

2 denotes Green Fleet course area

Attachment B –Course Diagrams



Course WA – Windward/Leeward with Offset Mark, Windward Finish	
Signal	Mark Rounding Order
WA2	Start – 1 – 1a – 2s/2p – Finish
WA3	Start – 1 – 1a – 2s/2p – 1 – 1a – 2s/2p – Finish
WA4	Start – 1 – 1a – 2s/2p – 1 – 1a – 2s/2p – 1 – 1a – 2s/2p – Finish

Championship Fleet Course

Start / Finish line is closed.

Green Fleet Course

Course Mark Rounding Order

W2 — Start - 1 - 2 - Finish

W3 — Start - 1 - 2 - 1 - 2 - Finish

W4 — Start - 1 - 2 - 1 - 2 - 1 - 2 - Finish

Start/Finish line is closed.

