



2024 PYC TWO BRIDGE FARCE RACE

Saturday, June 15, 2024

Organizing Authority (OA): Pensacola Yacht Club
Pensacola, FL 32503

NOTICE OF RACE

1. RULES

1.1 This regatta shall be governed by rules as defined in the *Racing Rules of Sailing* (RRS).

1.2 The race(s) will be sailed under the current Pensacola Bay General Sailing Instructions (PBGSI) available online at: [2024 Pensacola Bay Sailing Instructions](#)

1.3 Supplemental Sailing Instructions will be available online no later than 1800 on Friday, June 14. All times are GPS USA CDT.

2. ELIGIBILITY, ENTRY AND FEE

2.1 The regatta is open to all One Design keelboat and ORR-Ez classes.

2.2 Boats entered in Racing and Cruising Divisions shall have a current and valid ORR-Ez rating certificate.

2.3 If a competitor does not have an ORR-Ez certificate, it may be assigned an ORR-Ez handicap at the discretion of the OA. Assigned handicaps will be posted on the official notice board on or before 1800 June 14th 2024.

2.4 For a one-design class to be scored as a separate class, it must have a minimum of 3 entries by 1700 on Friday, June 14, 2024.

2.5 Boats shall race with the following crew, in addition to the skipper, restrictions:

Boats 20' to 29' – four crew max

Boats 30' to 39' – five crew max

Boats 40' to 49' – six crew max

2.6 Boats wishing to enter shall register online at the event Regatta Man website: [2024 PYC Two Bridge Farce](#) race

- 2.7 [NP] Every competitor (skippers and all crew) shall agree to the PYC Liability and Waiver Agreement (Posted on PYC Website) before they participate in any race of the regatta. Registering for this regatta confirms your commitment to agreeing to the Liability and Wavier Agreement.
- 2.8 To be considered an entry in the regatta, a boat shall complete all registration steps and pay all fees online on or before 1700 hours, Friday, June 14, 2024. There will be no onsite registration.
- 2.9 Entry fee for all classes: \$35/Boat.

3. CLASSES

- 3.1 Classes may include ORR-Ez, which is subdivided into Racing and Cruising Divisions, Multihull, and One-Design Classes (such as the Viper, Catalina 22, and Fish Classes). Eligibility for the Orr-Ez Cruising Division is as per criteria in the Pensacola Bay Cruising Fleet Charter contained in Regattaman Registration for this event. Each One-Design Class must have no less than 3 started boats to compete as a One-Design Class. IAny ORR-Ez class with more than 8 boats may be divided into sub-classes at the discretion of the Race Committee (RC).

4 NOTICES TO COMPETITORS.

- 4.1 Notices to Competitors may be posted on the Official Notice Board (ONB) on the Blue Porch. Competitors will be informed by text or email (indicated in the registration form) when a Notice to competitors is posted on the ONB.
- 4.2 Changes to the rules will be posted on the ONB before 0900 on the day it will take effect, except that any change to the schedule of races will be posted no later than 2000 on the day before it will take effect.
- 4.3 For an on the water change to the sailing instructions: “L” flag shall be displayed. The change will be announced on the designated VHF channel. (This changes RRS Race Signals)

5 SIGNALS MADE ASHORE

- 5.1 Signals made ashore will be displayed from a flagpole in the Pensacola Yacht Club lawn.
- 5.2 When flag AP is displayed ashore, ‘1 minute’ is replaced with ‘not less than 30 minutes’ in the race signal AP. (This changes RRS Race Signals)

6 COMMUNICATION

- 6.1 [DP] All boats shall carry a VHF radio capable of communicating on channel 72. Channels 68, 69, and 71 may be used. (This supersedes any Class Rules)
- 6.2 On the water, the Race Committee (RC) will make courtesy broadcasts to competitors on VHF radio channel 72.
- 6.3 [DP] From the first warning signal until the end of the last race of the day, except in an emergency or as required by a rule, a boat shall not make voice nor data

transmissions and shall not receive voice nor data communication that is not available to all boats.

- 6.4 The RC may broadcast the course, bearing and distance information before the warning signal, start times, starting infractions, and information important to racing. Failure of the transmission, failure of any boat to receive or properly interpret this information, or any errors or omissions on the part of the hailed messages shall not constitute grounds for granting redress. (This changes RRS 62.1(a))
- 6.5 Individual recalls and boats penalized under RRS 30.2 or RRS 30.3 may be broadcast on the designated VHF channel using bow/sail numbers. (This changes RRS 29.1, 30.2 and 30.3)
- 6.6 Failure of the RC to make any broadcast or to time it accurately will not be grounds for a request for redress. (This changes RRS 62.1(a))
- 6.7 The RC may broadcast any course changes over the designated VHF channel. Failure of a boat to hear such notification or failure to broadcast will not be grounds for redress. (This changes RRS 62.1(a))

7. SCHEDULE

- 7.1 The Start for the first boat will use RRS26. Thereafter, there will be no starting sequence flags or associated sound signals.
- 7.2 The warning signal for the first start is scheduled for 1155 on Saturday, June 15, 2024.
- 7.3 A scratch sheet showing start times for each competitor will be available once entries are closed, final handicaps determined and course selected. A copy of their specific start time and a link to a countdown timer will be emailed to competitors by 0900 on Saturday 15th. Individual recalls for boats OCS relative to their assigned start time will be indicated by the X-ray flag, associated sound signal, and communicated VHF radio channel 72. Failure of the transmission, failure of any boat to receive or properly interpret this information, or any errors or omissions on the part of the hailed messages shall not constitute grounds for granting redress. (This changes RRS 62.1(a))
- 7.4 The awards celebration is scheduled to be held in the Clubhouse, Ballroom A following final scoring of the regatta.

8. VENUE AND COURSES

- 8.1 The racing area will be on Pensacola Bay including Pensacola 3 Mile Bridge and Pensacola Beach Bridge.
- 8.2 The courses are shown in NOR Appendix A, B or C. For all courses, the Start/Finish is a Gate of the Course. The Start and Finish will be located near Channel Marker "I" of the Pensacola Bay Channel Markers.
- 8.3 For courses #1 and #2, after starting, boats may round the marks in either order before finishing.

8.4 For course #3, either course may be used however the handicap will be calculated based on a distance of 7.02 miles

9 TIME LIMIT

9.1 The time limit on Saturday for the first boat to sail the course and finish a race will be ~~2.5~~ 3 hours after her start.

9.2 Boats failing to finish within 60 minutes after the first boat sails the course and finishes, and not thereafter retiring, being penalized, or given redress, will be scored TLE (Time Limit Expired, see Scoring). (This changes RRS 35, A4, A5.1, A5.2 and A10)

10. PENALTY SYSTEM

10.1 The Scoring Penalty, Rule 44.3, will apply.

11. SCORING

11.1 The low-point scoring system of RRS Appendix A shall be used except there will be no discarded races. This changes RRS A2.

11.2 A boat scored TLE shall be scored points for her finishing place 2 more than the points scored by the last boat that finished according to NOR 9.2.

12. PRIZES

12.1 Award Presentations will be at Pensacola Yacht Club.

12.2 Prizes for each CLASS will be awarded for the RACE based on FINISH POSITION as follows:

5 or more boats: 1st – 3rd place.

4 boats: 1st – 2nd place.

3 boats: 1st place.

13. FURTHER INFORMATION

PYC Fleet Captain: Sue Domagala:

PRO: David Chandler: drchandler55@gmail.com

Race Committee Chair:

Pensacola Yacht Club 1897 Cypress St. Pensacola,

FL 32502 | P: 850.433.8804 | F: 850.438.3105 E:

pyc@pycfl.com

Appendix D to NOR: Courses Defined

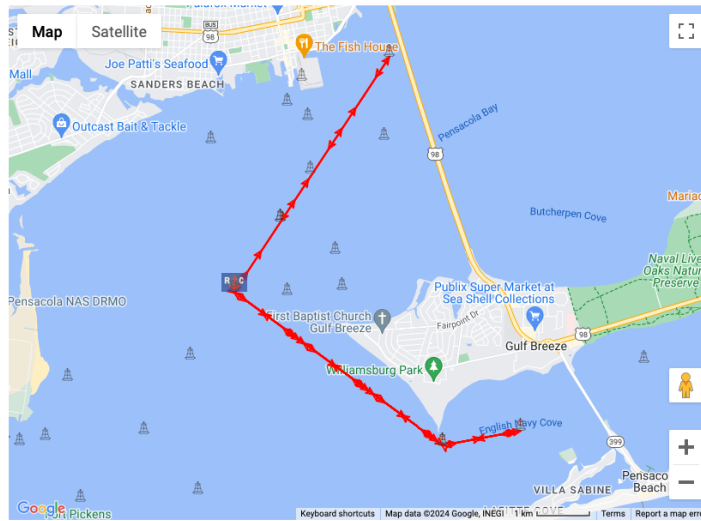
Course 1: Start to First (Mark M or Mark G) then to Second (Mark G or M) then to Finish.
The GATE Is a mark of the Course.
 Distance 12.86 NM

Course: 2 Bridge #1 I-Lp-M-Ls-I-G-I 12.86

For HELP on using this tool, click [HERE](#)

HIDE MAP

Map Legend: R = Start ● = Finish ▲ = Govt (unused) ▲ = Govt (used) ▲ = Drop Mark ▲ = Gate ▲ = Offset ● = Waypoint



** Drop Marks (not from preset list) may be placed by clicking anywhere on map OR use the "Add New Mark" button below.

Refresh Map

(uses mark names)

Export Table		Mark Data					Leg Data	
(re-order)	Mark	ID	Type	Actions	Location	Description	Dist To	(True) Hdg To
<input type="button" value="↻"/>	1	I	Start	<input type="button" value="DEL"/> <input type="button" value="Dup as Finish"/>	Lat: 30° 21.987N Lon: 87° 13.458W	Pensacola Bay Lighted Buoy 25 FI G 2.5s	0.00 NM	000°
<input type="button" value="↻"/>	2	L	Mark	<input type="button" value="DEL"/>	Lat: 30° 20.3976N Lon: 87° 10.947W	Deer Point FI R 4s	2.69 NM	126°
<input type="button" value="↻"/>	3	M	Mark	<input type="button" value="DEL"/>	Lat: 30° 20.55N Lon: 87° 10.0116W	Between Deer Point & Pensacola Beach Bridge FI R 2.5s	0.82 NM	079°
<input type="button" value="↻"/>	4	L	Mark	<input type="button" value="DEL"/>	Lat: 30° 20.3976N Lon: 87° 10.947W	Deer Point FI R 4s	0.82 NM	259°
<input type="button" value="↻"/>	5	I	Mark	<input type="button" value="DEL"/>	Lat: 30° 21.987N Lon: 87° 13.458W	Pensacola Bay Lighted Buoy 25 FI G 2.5s	2.69 NM	306°
<input type="button" value="↻"/>	6	G	Mark	<input type="button" value="DEL"/>	Lat: 30° 24.4272N Lon: 87° 11.5926W	Range marker West near Three Mile Bridge FI G 2.5s	2.92 NM	033°
<input type="button" value="↻"/>	7	I	Finish	<input type="button" value="DEL"/>	Lat: 30° 21.987N Lon: 87° 13.458W	Pensacola Bay Lighted Buoy 25 FI G 2.5s	2.92 NM	213°
<input type="button" value="ADD NEW MARK"/>		Times Around (1) <input type="button" value="⊕"/> : Course Length					12.86 nm	

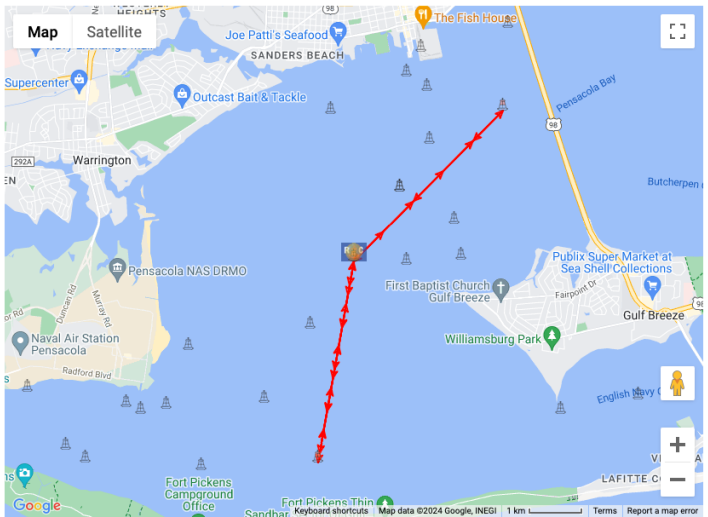
Course 2: Start to First (Mark N or Mark C) then to Second (Mark C or N) then to Finish.
The GATE is a mark of the Course.
 Distance: 8.7 NM

Course: 2 Bridge Farce #2 I-N-I-C 8.7

For HELP on using this tool, click [HERE](#)

[HIDE MAP](#)

Map Legend: = Start = Finish = Govt (unused) = Govt (used) = Drop Mark = Gate = Offset = Waypoint



** Drop Marks (not from preset list) may be placed by clicking anywhere on map OR use the "Add New Mark" button below.

[Refresh Map](#)

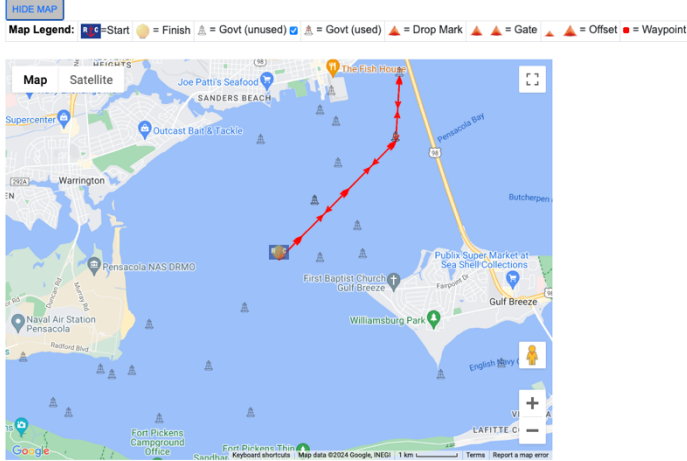
[Lat/Lon Format](#)
[REVERSE](#)
[DELETE](#)
[RENAME](#)
[QUICK RENAME](#)
[Export GPX](#)
[Not Using Predicted Course](#)

Export Table		Mark Data					Leg Data	
(re-order)	Mark	ID	Type	Actions	Location	Description	Dist To	(True) Hdg To
	1	I	Start	DEL Dup as Finish	Lat: 30° 21.987N Lon: 87° 13.458W	Pensacola Bay Lighted Buoy 25 FI G 2.5s	0.00 NM	000°
	2	N	Mark	DEL	Lat: 30° 19.8936N Lon: 87° 13.8894W	Pensacola Bay off Santa Rosa Island FI G 2.5s	2.13 NM	190°
	3	I	Mark	DEL	Lat: 30° 21.987N Lon: 87° 13.458W	Pensacola Bay Lighted Buoy 25 FI G 2.5s	2.13 NM	010°
	4	C	Mark	DEL	Lat: 30° 23.5638N Lon: 87° 11.649W	Three Mile Bridge Channel Marker	2.22 NM	044°
	5	I	Finish	DEL	Lat: 30° 21.987N Lon: 87° 13.458W	Pensacola Bay Lighted Buoy 25 FI G 2.5s	2.22 NM	224°
ADD NEW MARK		Times Around (1) : Course Length					8.7 nm	

Course 3: I-Lp-M-Ls-I OR I-Cp-G-Cs-I. The GATE is a mark of the Course. Distance I to M: 7.02 NM Distance I to I-C-G-C-I: 6.16 NM

Course: 2 Bridge #3A I-Cp-G-Cs-I 6.16

For HELP on using this tool, click [HERE](#)



** Drop Marks (not from preset list) may be placed by clicking anywhere on map OR use the "Add New Mark" button below.

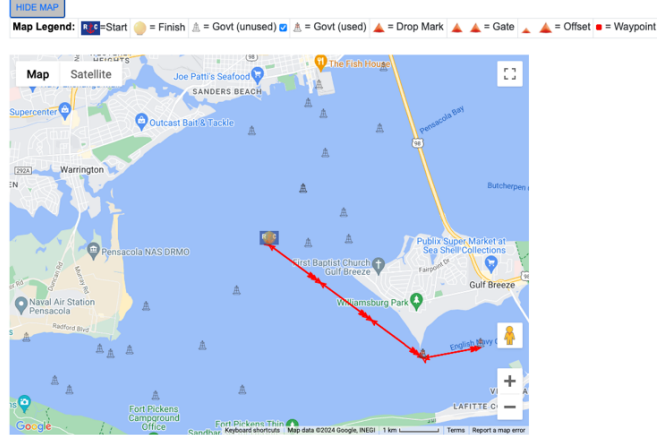
Refresh Map

(uses mark names)

Export Table							Mark Data		Leg Data	
(re-order)	Mark	ID	Type	Actions	Location	Description	Dist To	(True) Hdg To		
<input type="button" value="ID"/>	1	I	Start	<input type="button" value="DEL"/> <input type="button" value="Dup as Finish"/>	Lat: 30° 21.987N Lon: 87° 13.458W	Pensacola Bay Lighted Buoy 25 FI G 2.5s	0.00 NM	000°		
<input type="button" value="ID"/>	2	C	Mark	<input type="button" value="DEL"/>	Lat: 30° 23.5638N Lon: 87° 11.649W	Three Mile Bridge Channel Marker	2.22 NM	044°		
<input type="button" value="ID"/>	3	G	Mark	<input type="button" value="DEL"/>	Lat: 30° 24.4272N Lon: 87° 11.5926W	Range marker West near Three Mile Bridge FI G 2.5s	0.86 NM	003°		
<input type="button" value="ID"/>	4	C	Mark	<input type="button" value="DEL"/>	Lat: 30° 23.5638N Lon: 87° 11.649W	Three Mile Bridge Channel Marker	0.86 NM	183°		
<input type="button" value="ID"/>	5	I	Finish	<input type="button" value="DEL"/>	Lat: 30° 21.987N Lon: 87° 13.458W	Pensacola Bay Lighted Buoy 25 FI G 2.5s	2.22 NM	224°		
<input type="button" value="ADD NEW MARK"/>							Times Around (1) <input button"="" type="button" value="-"/> : Course Length		6.16 nm	

Course: 2 Bridge #3b I-Lp-M-Ls-I 7.02

For HELP on using this tool, click [HERE](#)



** Drop Marks (not from preset list) may be placed by clicking anywhere on map OR use the "Add New Mark" button below.

Refresh Map

(uses mark names)

Export Table							Mark Data		Leg Data	
(re-order)	Mark	ID	Type	Actions	Location	Description	Dist To	(True) Hdg To		
<input type="button" value="ID"/>	1	I	Start	<input type="button" value="DEL"/> <input type="button" value="Dup as Finish"/>	Lat: 30° 21.987N Lon: 87° 13.458W	Pensacola Bay Lighted Buoy 25 FI G 2.5s	0.00 NM	000°		
<input type="button" value="ID"/>	2	L	Mark	<input type="button" value="DEL"/>	Lat: 30° 20.3976N Lon: 87° 10.947W	Deer Point FI R 4s	2.69 NM	126°		
<input type="button" value="ID"/>	3	M	Mark	<input type="button" value="DEL"/>	Lat: 30° 20.55N Lon: 87° 10.0116W	Between Deer Point & Pensacola Beach Bridge FI R 2.5s	0.82 NM	079°		
<input type="button" value="ID"/>	4	L	Mark	<input type="button" value="DEL"/>	Lat: 30° 20.3976N Lon: 87° 10.947W	Deer Point FI R 4s	0.82 NM	259°		
<input type="button" value="ID"/>	5	I	Finish	<input type="button" value="DEL"/>	Lat: 30° 21.987N Lon: 87° 13.458W	Pensacola Bay Lighted Buoy 25 FI G 2.5s	2.69 NM	306°		
<input type="button" value="ADD NEW MARK"/>							Times Around (1) <input type="button" value="+"/> <input type="button" value="-"/> : Course Length		7.02 nm	