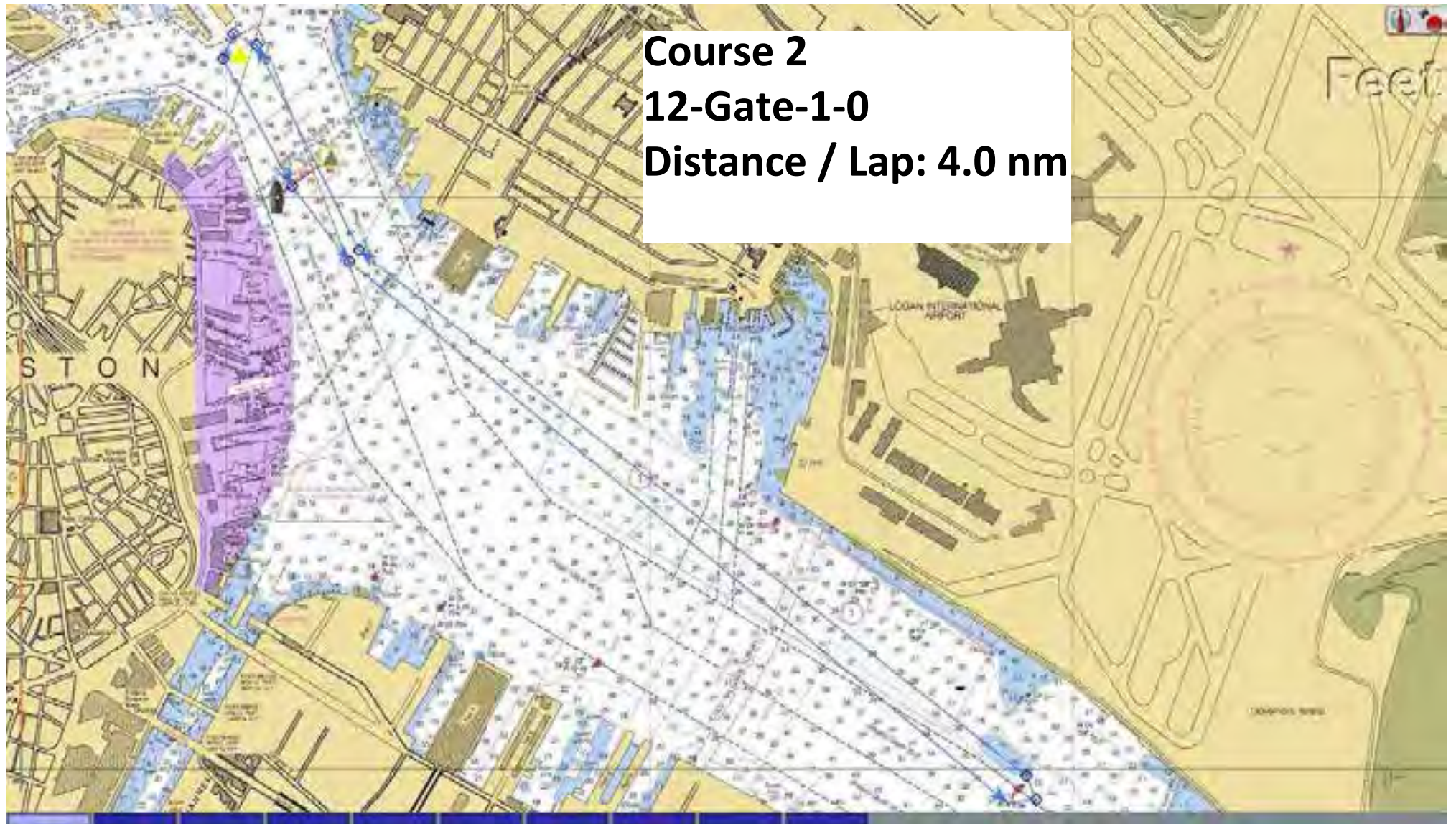


Course 1
13-Gate-1-0
Distance / Lap: 2.6 nm

Course 2
12-Gate-1-0
Distance / Lap: 4.0 nm



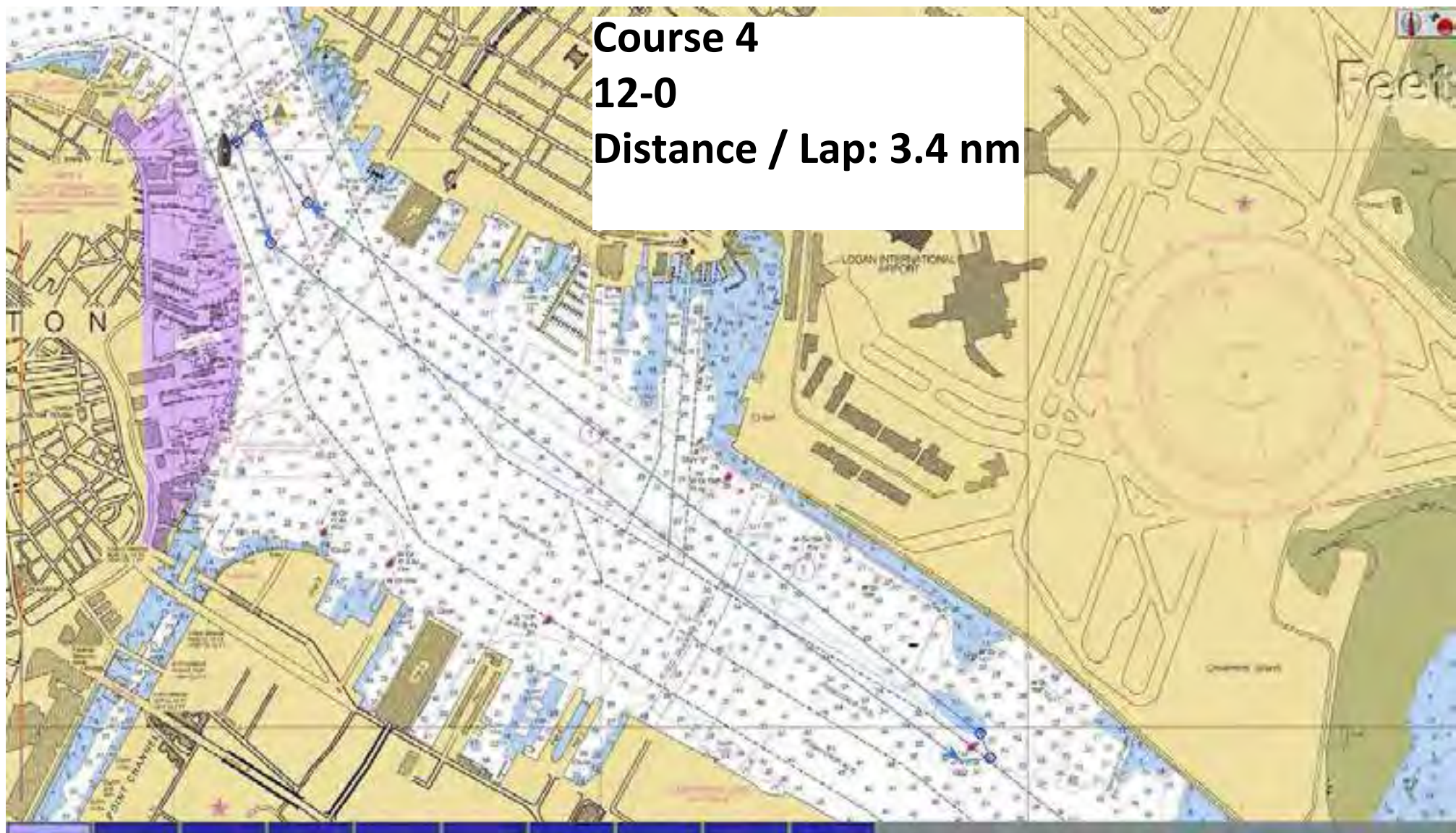
A nautical chart of Boston Harbor and the surrounding area. The chart shows the coastline, streets, and buildings. A purple highlighted area indicates a specific course or route. The word "BOSTON" is visible on the left side. "LOGAN INTERNATIONAL AIRPORT" is labeled on the right side. A white text box in the upper right corner contains the text "Course 3", "13-0", and "Distance / Lap: 2.1 nm".

Course 3

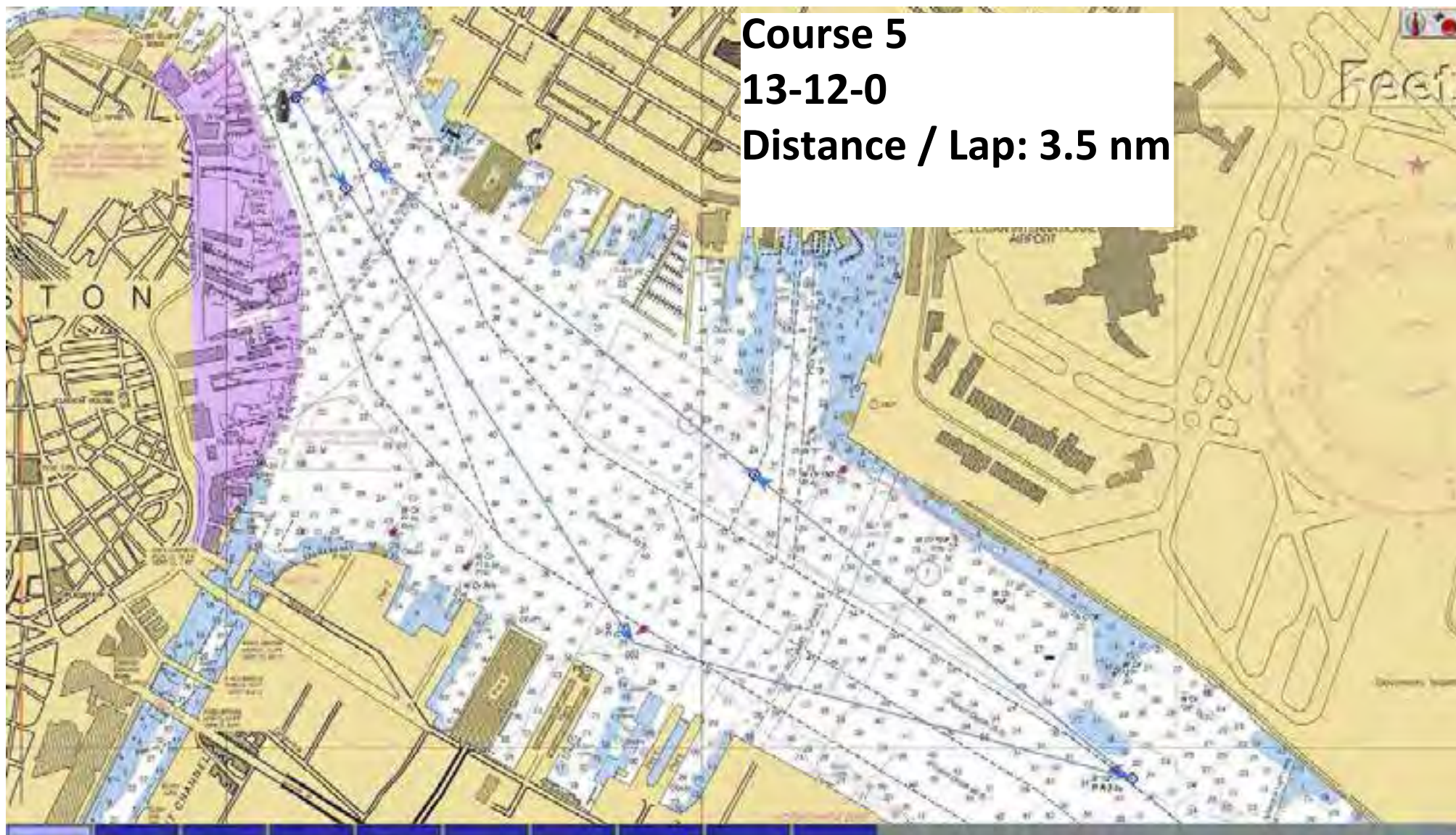
13-0

Distance / Lap: 2.1 nm

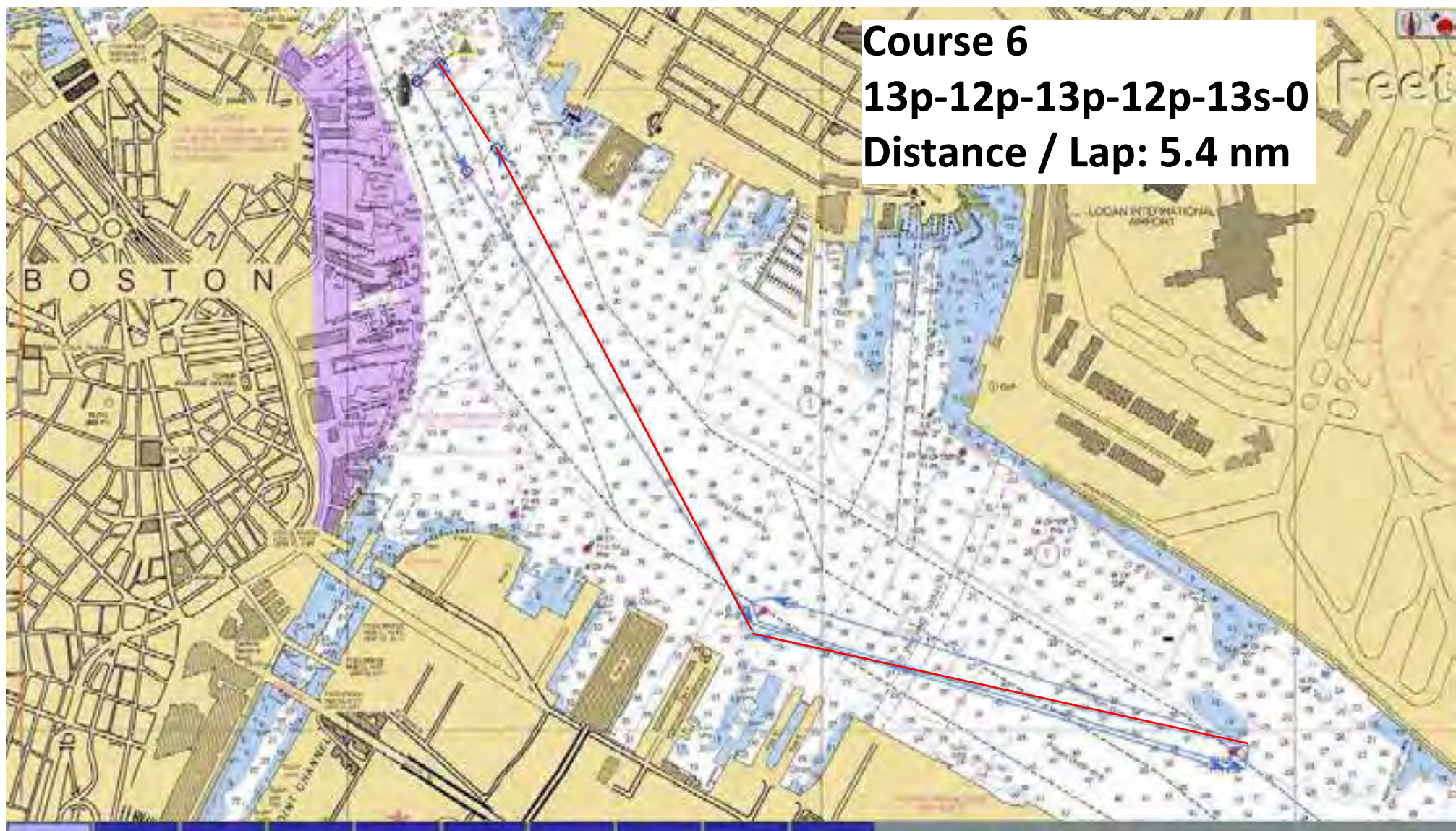
Course 4
12-0
Distance / Lap: 3.4 nm



Course 5
13-12-0
Distance / Lap: 3.5 nm



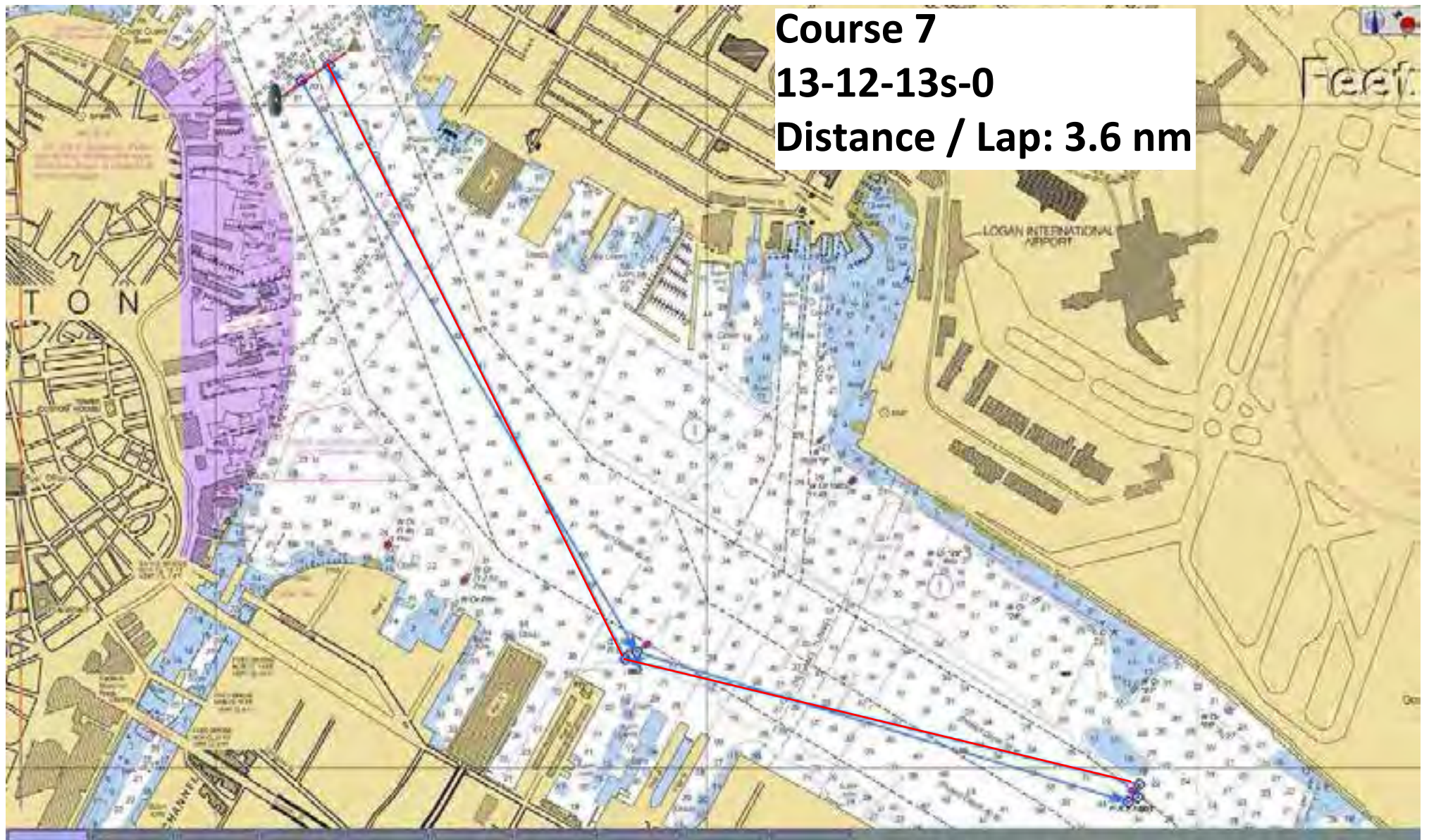
Course 6
13p-12p-13p-12p-13s-0
Distance / Lap: 5.4 nm

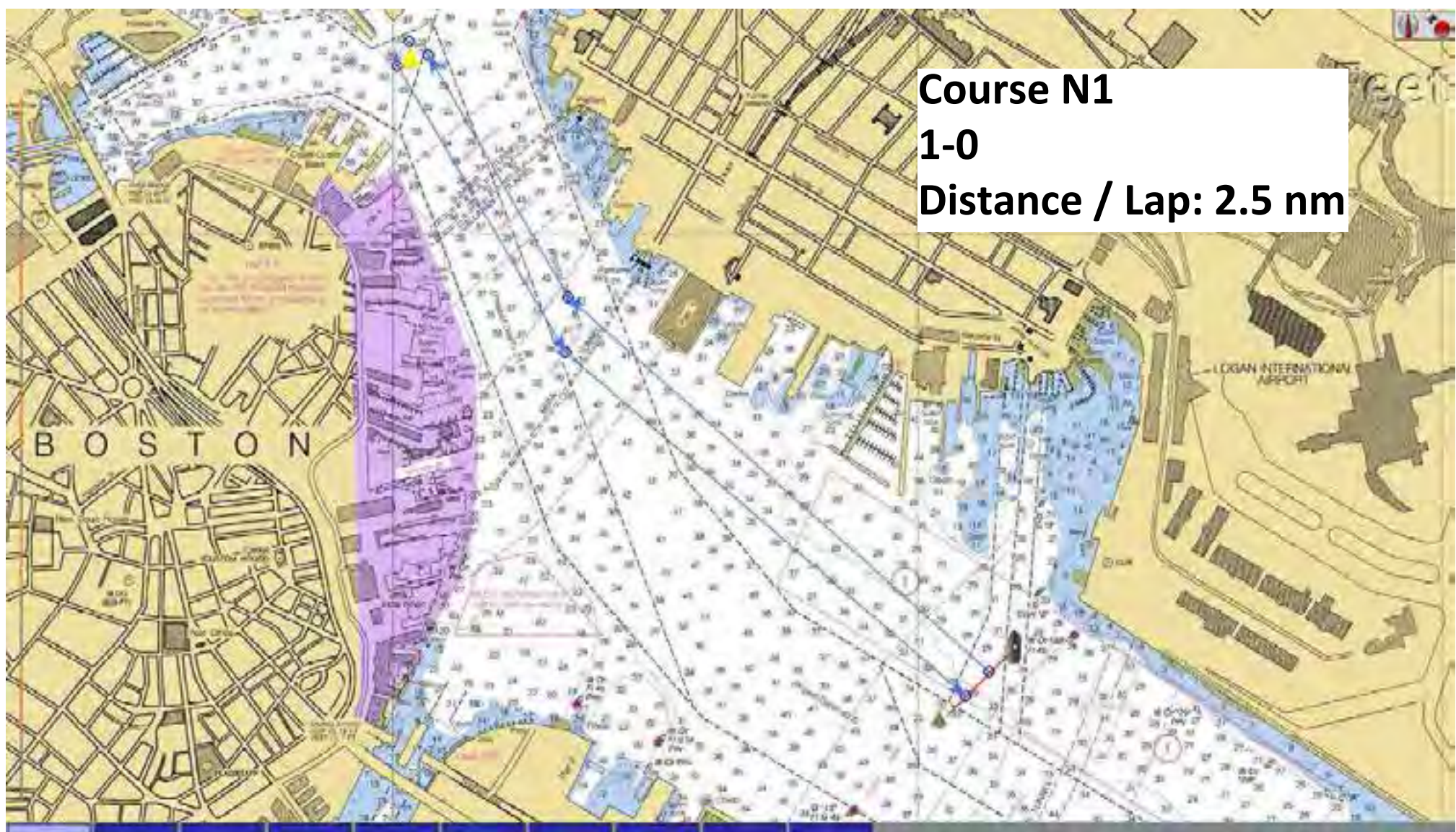


Course 7

13-12-13s-0

Distance / Lap: 3.6 nm





Course N1
1-0
Distance / Lap: 2.5 nm

Course N2

1-13-12-1-0

Distance / Lap: 6.5 nm

