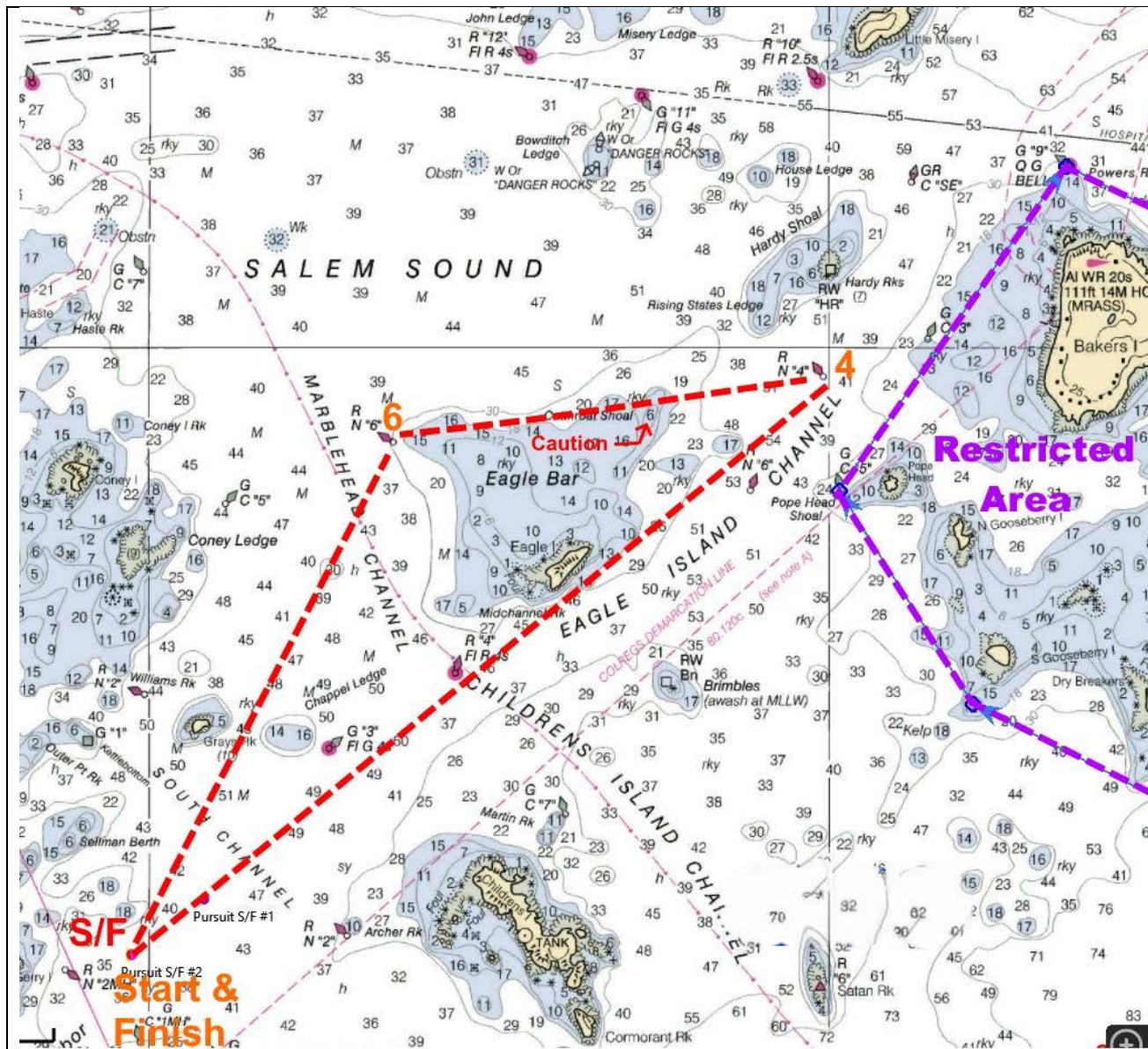


DESCRIPTION of COURSES North 4 and 6

COURSE #4

Course #4 is approximately 4 (4.15) nautical miles long and will be sailed leaving all marks to either port or starboard.

Placards will indicate which direction as shown below the course chart. The start & finish will be between the Signal boat's orange (start) or blue (finish) flag & a green tetrahedron.



Placard #4

4

Over a **RED** placard

Means sail Course #4 Leaving all marks to port

First mark is GM # 4 NE of Eagle Island

4→6→F

Placard #4

4

Over a **GREEN** placard

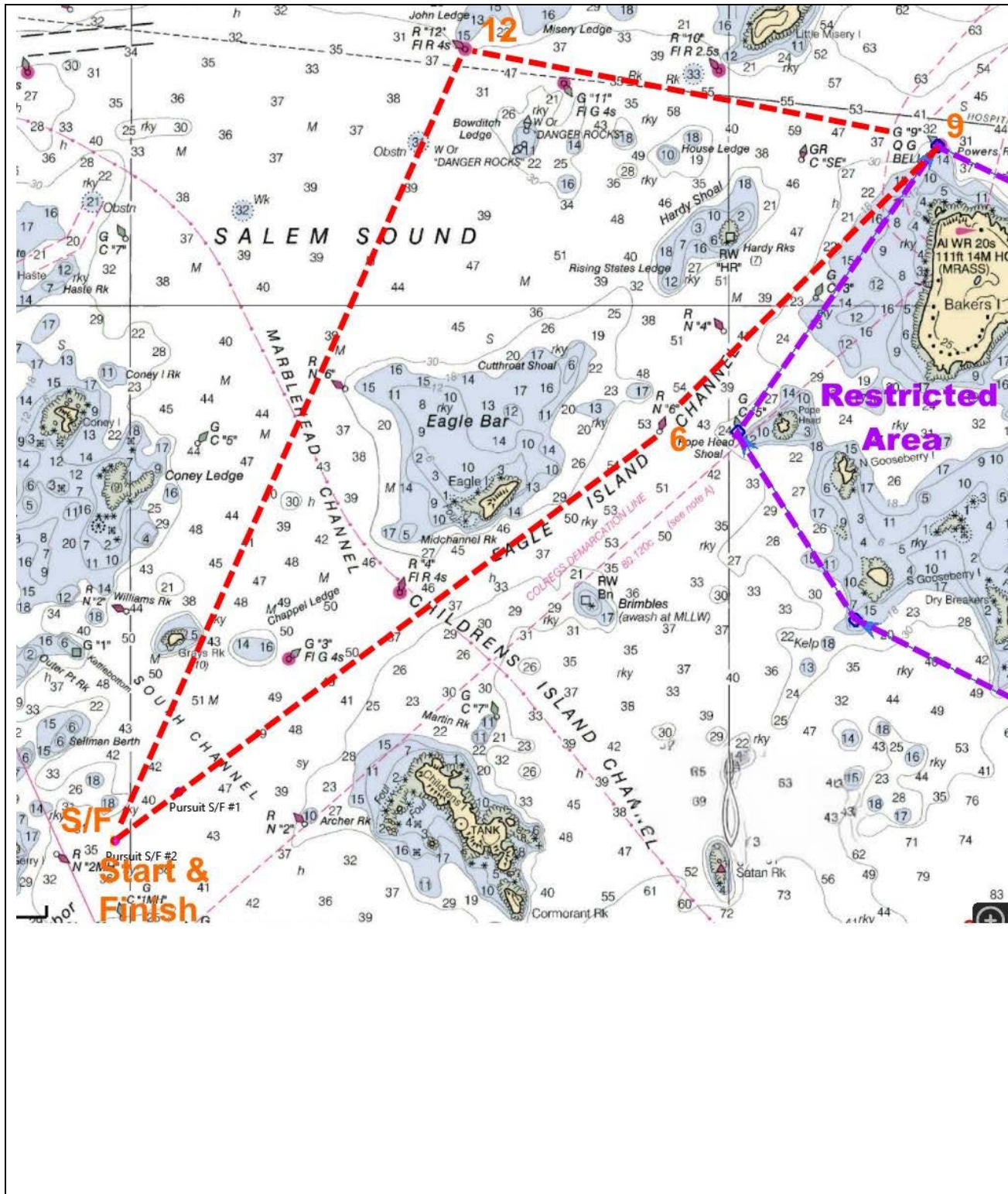
Means sail Course #4 Leaving all marks to starboard

First mark is GM 6 NW of Eagle Is.

6→4→F

COURSE #6

Course #6 is approximately 6 nautical miles long and will be sailed leaving all marks to either port or starboard. Placards will indicate which direction as shown below the course chart. The start & finish will be between the Signal boat's orange (start) or blue (finish) flag & a green tetrahedron.



Placard #6

6

Over a **RED** placard

Means sail Course #6 Leaving all marks to port

First mark is GM # 6 NE of Eagle Island

6 → 9 → 12 → F

Placard #6

6

Over a **GREEN** placard

Means sail Course #6 Leaving all marks to starboard

First mark is GM 12 in Salem Sound

12 → 9 → 6 → F