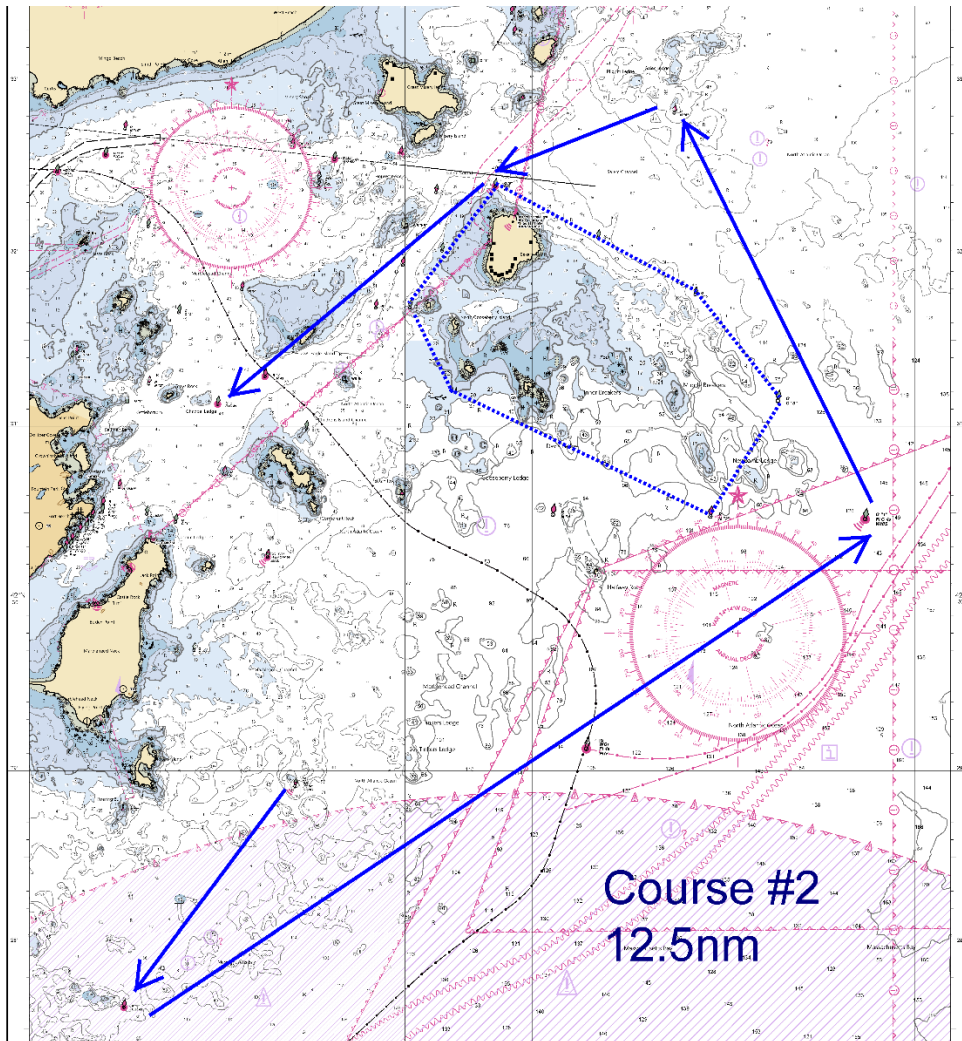


Mass Bay Shorthanded Regatta June 22, 2024

Course # 2

Distance: 12.5 nm

Mark	MBSA ID	Type	Description	Dist. To: nm	Leave Mark to
1	D	Start	TINKERS ROCK GONG GR "TR"	0.00	
2	G	Mark	GREAT PIG ROCKS BUOY R "4"	1.6	Port.
3	B	Mark	NEWCOMB LEDGE WHISTLE G "1"	5.2	Port
4	8	Mark	SALEM CHANNEL NUN (GALES LG) RN "6"	2.6	Port.
5	7	Mark	SALEM CHANNEL BELL (POWERS LG) G "9"	1.1	Port.
6	2	Finish	MARBLEHEAD CHANNEL (CHAPPEL LG) G "3"	2.0	Stbd.



*****The Course & Chart depictions, outlined above are for reference only and **SHALL NOT** be used for navigation*****

